

RSA



MOTORCYCLIST ROAD COLLISION CASUALTIES 1997 - 2006

Údarás Um Shábháilteacht Ar Bhóithre
Road Safety Authority

Overview of Motorcyclist Road Collision Casualties

This report contains motorcyclist collision statistics for 1997-2006. It examines trends in collisions, fatalities and injuries over time in the last decade as well as the most recent trends. It also details when and where motorcyclist road collisions occurred, who was involved and primary collision type.

Since 1997 motorcycle registrations have increased by 43 per cent whereas the motorcycle rider fatalities have decreased by 57 per cent.

In 2006, 29 motorcyclists were killed. This accounted for 8 per cent of all fatalities. An additional 505 motorcyclists were injured. The number of motorcyclist fatalities has reduced by 48 per cent between 2006 and 2005. In 2006, motorcyclists were 13 times more likely than car users to be killed and 3 times more likely than pedal cyclists to be killed per vehicle kilometres travelled.

Long-term trends in Motorcyclist Road Deaths

471 motorcyclists were killed in the period 1997-2006, 1499 were seriously injured in the same period. Seventy percent of motorcyclists killed in the period 1997-2006 were male aged 17-34 (i.e. 37% were male aged 17-24 and 33% were male aged 25-34). 62% of motorcyclists seriously injured were male aged 17-34. Sixty-five per cent (306) of these fatalities happened on Sunday, Saturday and Friday.

Figure 1: Data trends in Ireland 1997-2006.
Increasing motorcycle registration versus decreasing motorcyclist road toll

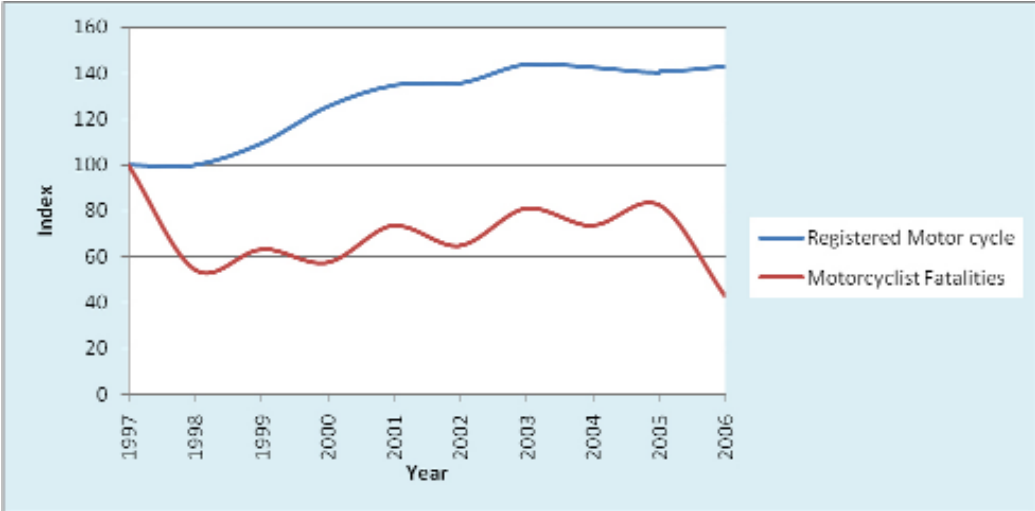


Figure 2: Motorcyclist Fatalities per 100,000 registered motorcycles, 1997-2006

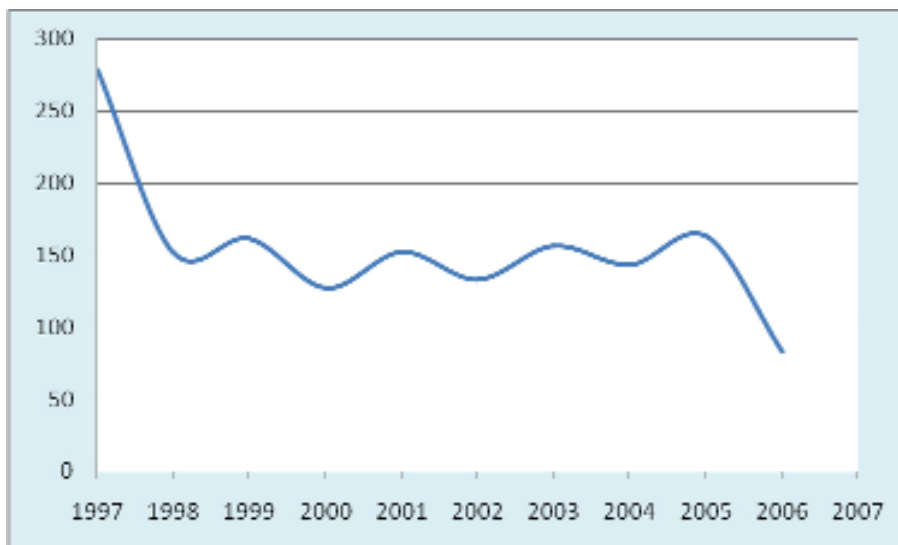
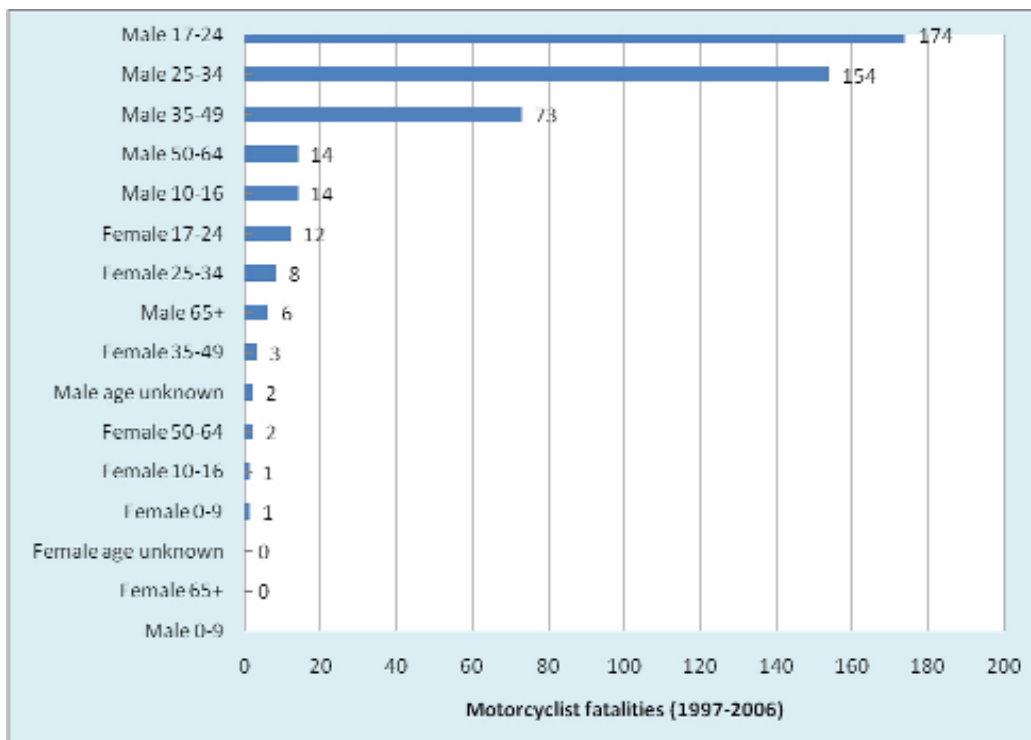


Figure 2: Motorcyclist Fatalities per 100,000 registered motorcycles, 1997-2006



WHEN MOTORCYCLISTS ARE KILLED

Generally, more fatal motorcycle crashes occur on the weekend than during the rest of the week. In the period 1997-2006, there were 471 motorcyclist fatalities, of which 255 (54%) occurred during the hours of 6:00 p.m. on Friday – 11:59 p.m. on Sunday. Fifty-seven 57% of the fatal motorcycle crashes occurred during the months of May through September, with June and July having the most fatalities.

Table 1: Motorcyclist fatalities by day of the week and hour of the day, 1997-2006

Hour	Sunday	Monday	Tuesday	Wednesday	Thursday	Friday	Saturday	Total	%
Midnight-2:59	13	10	7	4	4	8	17	63	13
3:00-5:59	11	2	1	1	4	0	6	25	5
6:00-8:59	5	8	4	7	7	8	6	45	10
9:00-11:59	10	1	3	1	1	8	9	33	7
12:00-14:59	12	7	7	7	2	3	16	54	11
15:00-17:59	23	8	6	3	9	15	26	90	19
18:00-20:59	31	6	10	3	19	4	22	95	20
21:00-23:59	22	4	3	4	6	14	13	66	14
Total	127	46	41	30	52	60	115	471	100

Figure 4: Motorcyclist fatalities by day of the week and hour of the day, 1997-2006

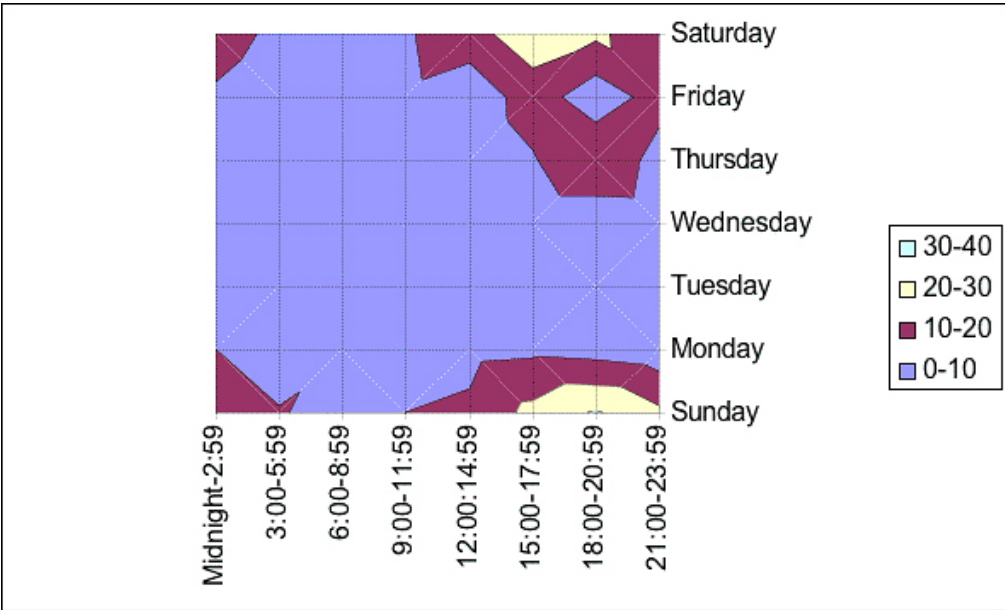


Table 2: ALL MOTORCYCLIST ROAD DEATHS AND SERIOUS INJURIES BY YEAR AND TIME OF DAY (1997-2006)

	1997	1998	1999	2000	2001	2002	2003	2004	2005	2006	Total	%
Midnight	14	9	5	7	5	8	15	8	11	4	86	4
1	11	10	7	6	5	6	7	2	3	1	58	3
2	17	8	7	2	9	1	7	3	0	1	55	3
3	5	10	5	4	5	2	2	0	1	1	35	2
4	7	1	0	3	7	2	2	2	0	2	26	1
5	2	1	1	1	0	3	2	0	1	1	12	1
6	0	0	4	0	0	1	0	0	1	2	8	0
7	4	9	10	5	5	6	8	4	9	5	65	3
8	13	10	6	11	9	8	7	6	10	3	83	4
9	3	7	9	6	3	5	7	2	1	2	45	2
10	8	9	11	5	4	7	6	6	6	4	66	3
11	12	8	7	9	3	6	7	3	4	4	63	3
12	6	7	12	9	13	10	11	5	5	7	85	4
13	12	6	8	9	12	8	9	8	13	9	94	5
14	15	9	9	10	9	6	4	5	8	11	86	4
15	22	17	3	7	11	6	11	8	10	8	103	5
16	14	13	12	9	20	8	12	12	12	12	124	6
17	18	15	24	21	19	12	17	21	11	10	168	9
18	18	26	17	13	25	8	14	14	12	11	158	8
19	24	18	12	18	18	13	6	13	8	0	130	7
20	19	16	16	11	14	17	18	14	9	5	139	7
21	27	9	12	15	13	8	8	9	9	4	114	6
22	20	11	5	13	12	12	12	1	9	3	98	5
23	10	12	8	4	9	4	3	4	5	1	60	3
Unknown	2	0	1	0	1	1	1	3	0	0	9	0
Total	303	241	211	198	231	168	196	153	158	111	1970	100

Table 3: ALL MOTORCYCLIST ROAD DEATHS AND SERIOUS INJURIES BY YEAR AND WEEK DAY (1997-2006)

	1997	1998	1999	2000	2001	2002	2003	2004	2005	2006	Total	%
Sunday	59	49	44	34	58	33	28	32	46	34	417	21
Monday	20	30	27	20	26	19	32	14	25	17	230	12
Tuesday	24	21	30	17	16	14	22	12	13	13	182	9
Wednesday	36	32	17	31	21	22	11	13	13	9	205	10
Thursday	37	26	29	31	27	30	30	22	12	14	258	13
Friday	42	36	34	24	32	25	41	17	16	9	276	14
Saturday	85	47	30	41	51	25	32	43	33	15	402	20
Total	303	241	211	198	231	168	196	153	158	111	1970	100

Table 4: ALL MOTORCYCLIST ROAD DEATHS AND SERIOUS INJURIES BY YEAR AND MONTH (1997-2006)

	1997	1998	1999	2000	2001	2002	2003	2004	2005	2006	Total	%
January	19	15	11	12	11	10	6	7	9	6	106	5
February	17	19	13	7	17	9	11	10	13	4	120	6
March	31	14	14	11	24	14	24	19	6	7	164	8
April	35	17	22	18	19	17	13	17	6	4	168	9
May	37	25	26	19	34	14	26	17	25	8	231	12
June	27	18	21	27	17	10	20	13	23	30	206	10
July	19	29	28	19	28	19	21	19	20	15	217	11
August	29	43	24	24	23	17	25	13	16	8	222	11
September	31	17	20	17	14	27	14	13	15	14	182	9
October	17	23	12	15	24	13	17	14	8	6	149	8
November	27	14	14	17	12	7	14	7	7	3	122	6
December	14	7	6	12	8	11	5	4	10	6	83	4
Total	303	241	211	198	231	168	196	153	158	111	1970	100

Table 5: ALL MOTORCYCLIST DEATHS AND SERIOUS INJURIES BY YEAR, AGE & GENDER (1997-2006)

	1997	1998	1999	2000	2001	2002	2003	2004	2005	2006	Total	%
Male 0-9	0	0	0	0	0	0	0	0	0	0	0	0
Female 0-9	0	0	1	0	0	0	0	0	0	0	1	0
Male 10-16	6	13	6	9	9	7	5	3	6	4	68	3
Female 10-16	1	0	3	1	2	1	0	0	0	0	8	0
Male 17-24	126	98	74	90	95	54	58	56	43	21	715	36
Female 17-24	15	5	9	3	11	4	5	5	3	1	61	3
Male 25-34	69	66	61	50	51	53	72	50	47	29	548	28
Female 25-34	11	7	3	4	6	4	6	2	2	2	47	2
Male 35-49	24	12	15	14	25	18	31	19	30	27	215	11
Female 35-49	1	2	1	0	2	2	0	1	4	3	16	1
Male 50-64	3	4	4	7	4	2	5	5	8	3	45	2
Female 50-64	1	0	0	0	0	0	0	1	1	0	3	0
Male 65+	4	0	4	2	0	0	1	2	0	1	14	1
Female 65+	0	0	0	0	0	0	0	0	1	0	1	0
Male age unknown	33	26	23	13	18	6	2	1	1	7	130	7
Female age unknown	4	5	3	2	1	1	0	0	0	0	16	1
Gender unknown	5	3	4	3	7	16	11	8	12	13	82	4
Total	303	241	211	198	231	168	196	153	158	111	1970	100

Table 6: ALL MOTORCYCLIST ROAD DEATHS BY YEAR AND TIME OF DAY (1997-2006)

	1997	1998	1999	2000	2001	2002	2003	2004	2005	2006	Total	%
Midnight	5	3	0	3	1	4	6	1	4	2	29	6
1	2	3	1	3	1	0	3	0	2	0	15	3
2	4	3	3	0	7	1	0	1	0	0	19	4
3	2	1	3	2	0	1	1	0	0	1	11	2
4	2	1	0	3	2	0	1	1	0	1	11	2
5	1	0	0	0	0	1	1	0	0	0	3	1
6	0	0	4	0	0	0	0	0	0	2	6	1
7	2	0	3	1	2	3	3	1	5	0	20	4
8	3	2	1	2	3	1	1	2	3	1	19	4
9	1	0		0	2	0	1	1	0	0	5	1
10	0	1	2	1	1	1	1	2	1	1	11	2
11	4	1	2	1	1	0	4	2	0	2	17	4
12	2	1	4	1	0	1	3	2	2	2	18	4
13	3	1	3	0	2	1	0	2	6	2	20	4
14	4	3	0	1	3	1	0	3	0	1	16	3
15	5	2	0	3	1	3	2	4	5	3	28	6
16	1	1	3	4	3	3	5	3	5	2	30	6
17	2	1	3	2	4	6	5	5	3	1	32	7
18	2	3	2	0	2	3	3	4	4	4	27	6
19	9	1	3	3	4	3	0	3	4	0	30	6
20	3	2	2	2	2	6	7	8	4	2	38	8
21	4	1	2	3	3	2	1	4	2	2	24	5
22	3	4	0	3	3	2	6	0	5	0	26	6
23	4	2	2	1	3	1	1	1	1	0	16	3
Unknown	0	0	0	0	0	0	0	0	0	0	0	0
Total	68	37	43	39	50	44	55	50	56	29	471	100

Table 7: ALL MOTORCYCLIST ROAD DEATHS BY YEAR AND WEEK DAY (1997-2006)

	1997	1998	1999	2000	2001	2002	2003	2004	2005	2006	Total	%
Sunday	16	10	13	11	19	12	7	8	18	13	127	27
Monday	5	3	6	2	4	8	6	4	6	2	46	10
Tuesday	8	6	5	1	2	3	3	3	5	5	41	9
Wednesday	5	5	3	2	1	4	3	3	4	0	30	6
Thursday	10	2	3	4	6	6	8	6	4	3	52	11
Friday	9	5	5	6	5	7	12	4	5	2	60	13
Saturday	15	6	8	13	13	4	16	22	14	4	115	24
Total	68	37	43	39	50	44	55	50	56	29	471	100

Table 8: ALL MOTORCYCLIST ROAD DEATHS BY YEAR AND MONTH (1997-2006)

	1997	1998	1999	2000	2001	2002	2003	2004	2005	2006	Total	%
January	2	3	2	1	0	3	3	1	5	1	21	4
February	5	1	3	0	5	2	4	6	6	0	32	7
March	7	2	6	2	6	3	6	3	4	2	41	9
April	5	2	3	3	4	6	4	6	1	2	36	8
May	9	2	2	2	6	2	5	7	10	3	48	10
June	9	8	4	5	3	4	9	3	7	6	58	12
July	7	3	6	6	7	5	9	7	8	5	63	13
August	2	10	6	3	3	6	4	4	5	1	44	9
September	11	2	5	5	4	10	2	6	3	4	52	11
October	2	2	2	4	6	1	8	4	3	3	35	7
November	7	2	3	4	3	1	1	2	1	0	24	5
December	2	0	1	4	3	1	0	1	3	2	17	4
Total	68	37	43	39	50	44	55	50	56	29	471	100

Table 9: ALL MOTORCYCLIST DEATHS BY YEAR, AGE & GENDER (1997-2006)

	1997	1998	1999	2000	2001	2002	2003	2004	2005	2006	Total	%
Male 0-9	0	0	0	0	0	0	0	0	0	0	0	0
Female 0-9	0	0	1	0	0	0	0	0	0	0	1	0
Male 10-16	1	4	1	3	1	1	0	1	1	1	14	3
Female 10-16	0	0	0	0	1	0	0	0	0	0	1	0
Male 17-24	31	17	11	20	24	19	14	19	14	5	174	37
Female 17-24	6	0	3	0	2	1	0	0	0	0	12	3
Male 25-34	14	13	18	12	13	15	25	16	18	10	154	33
Female 25-34	2	1	0	0	0	3	0	1	1	0	8	2
Male 35-49	9	1	5	2	7	5	12	9	15	8	73	15
Female 35-49	0	0	1	0	0	0	0	0	0	2	3	1
Male 50-64	1	0	1	0	2	0	2	1	5	2	14	3
Female 50-64	0	0	0	0	0	0	0	1	1	0	2	0
Male 65+	2	0	2	0	0	0	0	2	0	0	6	1
Female 65+	0	0	0	0	0	0	0	0	0	0	0	0
Male age unknown	1	1	0	0	0	0	0	0	0	0	2	0
Female age unknown	0	0	0	0	0	0	0	0	0	0	0	0
Gender unknown	1	0	0	2	0	0	2	0	1	1	7	1
Total	68	37	43	39	50	44	55	50	56	29	471	100

Table 10: ALL MOTORCYCLIST SERIOUS INJURIES BY YEAR AND TIME OF DAY (1997-2006)

	1997	1998	1999	2000	2001	2002	2003	2004	2005	2006	Total	%
Midnight	9	6	5	4	4	4	9	7	7	2	57	4
1	9	7	6	3	4	6	4	2	1	1	43	3
2	13	5	4	2	2	0	7	2	0	1	36	2
3	3	9	2	2	5	1	1	0	1	0	24	2
4	5	0	0	0	5	2	1	1	0	1	15	1
5	1	1	1	1	0	2	1	0	1	1	9	1
6	0	0	0	0	0	1	0	0	1	0	2	0
7	2	9	7	4	3	3	5	3	4	5	45	3
8	10	8	5	9	6	7	6	4	7	2	64	4
9	2	7	9	6	1	5	6	1	1	2	40	3
10	8	8	9	4	3	6	5	4	5	3	55	4
11	8	7	5	8	2	6	3	1	4	2	46	3
12	4	6	8	8	13	9	8	3	3	5	67	4
13	9	5	5	9	10	7	9	6	7	7	74	5
14	11	6	9	9	6	5	4	2	8	10	70	5
15	17	15	3	4	10	3	9	4	5	5	75	5
16	13	12	9	5	17	5	7	9	7	10	94	6
17	16	14	21	19	15	6	12	16	8	9	136	9
18	16	23	15	13	23	5	11	10	8	7	131	9
19	15	17	9	15	14	10	6	10	4	0	100	7
20	16	14	14	9	12	11	11	6	5	3	101	7
21	23	8	10	12	10	6	7	5	7	2	90	6
22	17	7	5	10	9	10	6	1	4	3	72	5
23	6	10	6	3	6	3	2	3	4	1	44	3
Unknown	2	0	1	0	1	1	1	3	0	0	9	1
Total	235	204	168	159	181	124	141	103	102	82	1499	100

Table 11: ALL MOTORCYCLIST SERIOUS INJURIES BY YEAR AND WEEK DAY (1997-2006)

	1997	1998	1999	2000	2001	2002	2003	2004	2005	2006	Total	%
Sunday	43	39	31	23	39	21	21	24	28	21	290	19
Monday	15	27	21	18	22	11	26	10	19	15	184	12
Tuesday	16	15	25	16	14	11	19	9	8	8	141	9
Wednesday	31	27	14	29	20	18	8	10	9	9	175	12
Thursday	27	24	26	27	21	24	22	16	8	11	206	14
Friday	33	31	29	18	27	18	29	13	11	7	216	14
Saturday	70	41	22	28	38	21	16	21	19	11	287	19
Total	235	204	168	159	181	124	141	103	102	82	1499	100

Table 12: ALL MOTORCYCLIST SERIOUS INJURIES BY YEAR AND MONTH (1997-2006)

	1997	1998	1999	2000	2001	2002	2003	2004	2005	2006	Total	%
January	17	12	9	11	11	7	3	6	4	5	85	6
February	12	18	10	7	12	7	7	4	7	4	88	6
March	24	12	8	9	18	11	18	16	2	5	123	8
April	30	15	19	15	15	11	9	11	5	2	132	9
May	28	23	24	17	28	12	21	10	15	5	183	12
June	18	10	17	22	14	6	11	10	16	24	148	10
July	12	26	22	13	21	14	12	12	12	10	154	10
August	27	33	18	21	20	11	21	9	11	7	178	12
September	20	15	15	12	10	17	12	7	12	10	130	9
October	15	21	10	11	18	12	9	10	5	3	114	8
November	20	12	11	13	9	6	13	5	6	3	98	7
December	12	7	5	8	5	10	5	3	7	4	66	4
Total	235	204	168	159	181	124	141	103	102	82	1499	100

Table 13: ALL MOTORCYCLIST SERIOUS INJURIES BY YEAR, AGE & GENDER (1997-2006)

	1997	1998	1999	2000	2001	2002	2003	2004	2005	2006	Total	%
Male 0-9	0	0	0	0	0	0	0	0	0	0	0	0
Female 0-9	0	0	0	0	0	0	0	0	0	0	0	0
Male 10-16	5	9	5	6	8	6	5	2	5	3	54	4
Female 10-16	1	0	3	1	1	1	0	0	0	0	7	0
Male 17-24	95	81	63	70	71	35	44	37	29	16	541	36
Female 17-24	9	5	6	3	9	3	5	5	3	1	49	3
Male 25-34	55	53	43	38	38	38	47	34	29	19	394	26
Female 25-34	9	6	3	4	6	1	6	1	1	2	39	3
Male 35-49	15	11	10	12	18	13	19	10	15	19	142	9
Female 35-49	1	2	0	0	2	2	0	1	4	1	13	1
Male 50-64	2	4	3	7	2	2	3	4	3	1	31	2
Female 50-64	1	0	0	0	0	0	0	0	0	0	1	0
Male 65+	2	0	2	2	0	0	1	0	0	1	8	1
Female 65+	0	0	0	0	0	0	0	0	1	0	1	0
Male age unknown	32	25	23	13	18	6	2	1	1	7	128	9
Female age unknown	4	5	3	2	1	1	0	0	0	0	16	1
Gender unknown	4	3	4	1	7	16	9	8	11	12	75	5
Total	235	204	168	159	181	124	141	103	102	82	1499	100

WHERE MORE MOTORCYCLISTS WERE KILLED

In the period 1997-2006, 67 per cent of motorcycle fatalities occurred outside built-up area (i.e. on roads with posted speed limit greater than 60 km/h). The six counties having the highest number of motorcyclists killed in the last ten years are:

- Dublin with 19 per cent of the total number of motorcyclists killed in the last ten years
- Cork with 10 per cent of the total number of motorcyclists killed in the last ten years
- Limerick with 5 per cent of the total number of motorcyclists killed in the last ten years
- Galway with 5 per cent of the total number of motorcyclists killed in the last ten years
- Kildare with 5 per cent of the total number of motorcyclists killed in the last ten years
- Meath with 5 per cent of the total number of motorcyclists killed in the last ten years.
- Wexford with 5 per cent of the total number of motorcyclists killed in the last ten years

Table 14: Motorcyclist fatalities by year, county and province, 1997-2006

County	1997	1998	1999	2000	2001	2002	2003	2004	2005	2006	Total	%
Leinster												
Carlow	2	0	2	0	3	2	1	2	2	0	14	3
Dublin	10	9	9	12	4	8	13	7	13	4	89	19
Kildare	4	3	2	2	2	1	2	3	0	4	23	5
Kilkenny	5	0	0	2	2	2	1	1	1	1	15	3
Laois	1	0	0	0	0	0	3	0	1	1	6	1
Longford	0	0	1	3	0	2	1	0	0	0	7	1
Louth	3	0	2	2	1	2	3	1	1	1	16	3
Meath	4	2	1	0	3	3	4	4	3	1	25	5
Offaly	2	0	1	1	1	0	1	1	1	0	8	2
Westmeath	0	1	2	0	0	1	2	0	5	0	11	2
Wexford	1	1	3	1	2	2	4	6	2	2	24	5
Wicklow	2	2	4	0	2	1	1	2	3	0	17	4
Munster												
Clare	1	0	1	1	3	1	1	1	2	0	11	2
Cork	4	7	4	4	6	4	7	4	4	2	46	10
Kerry	3	0	2	0	3	1	0	2	1	2	14	3
Limerick	5	3	0	0	3	4	2	3	4	1	25	5
Tipperary	3	2	1	1	3	2	3	0	1	2	18	4
Waterford	4	0	1	1	5	2	1	0	1	2	17	4
Connacht												
Galway	3	2	4	3	4	1	2	2	1	0	22	5
Leitrim	0	0	0	0	1	0	0	1	0	0	2	0
Mayo	2	2	1	1	1	2	0	3	1	0	13	3
Roscommon	1	0	0	1	0	0	1	0	0	1	4	1
Sligo	0	0	1	0	0	0	1	1	2	0	5	1
Ulster (part of)												
Cavan	2	2	0	0	1	1	1	1	4	1	13	3
Donegal	1	0	1	1	0	1	0	0	0	3	7	1
Monaghan	5	1	0	3	0	1	0	5	3	1	19	4
Total	68	37	43	39	50	44	55	50	56	29	471	100

Table 15: Motorcyclist fatalities by year and speed zone, 1997-2006

Area	1997	1998	1999	2000	2001	2002	2003	2004	2005	2006	Total	%
Inside built up area	22	12	16	18	16	12	17	19	17	7	156	33
Outside built up area	46	25	27	21	34	32	38	31	39	22	315	67
Overall Total	68	37	43	39	50	44	55	50	56	29	471	100

WHAT DID THE MOTORCYCLISTS HIT

Forty per cent of motorcycle fatalities were single vehicle collisions with bollard/island, parked car, parked truck, pole, tree, tall/gate, ditch and other objects. Head on collision with other vehicle accounted for 29 percent of fatalities.

Table 16: Motorcyclist fatalities by year and primary collision type, 1997-2006

	1997	1998	1999	2000	2001	2002	2003	2004	2005	2006	Total	%
With a Pedestrian	3	0	1	1	1	1	1	2	1	0	11	2
Single vehicle only	27	25	19	12	21	14	20	19	23	10	190	40
Head-on conflict	18	5	9	8	15	11	18	13	15	4	116	25
Head-on right turn	3	1	3	1	1	4	3	0	0	4	20	4
Angle, both straight	1	0	1	3	3	6	2	5	0	2	23	5
Angle, right turn	2	0	2	3	3	3	3	5	7	4	32	7
Rear end, straight	1	2	1	4	1	0	1	3	0	0	13	3
Rear end, right turn	2	2	1	0	1	1	1	0	1	1	10	2
Rear end, left turn'	0	0	0	1	0	0	0	0	0	1	2	0
Other	11	2	6	6	4	4	6	3	9	3	54	11
Total	68	37	43	39	50	44	55	50	56	29	471	100

Table 17: Motorcyclist serious injuries by year and primary collision type, 1997-2006

	1997	1998	1999	2000	2001	2002	2003	2004	2005	2006	Total	%
With a Pedestrian	3	2	1	2	3	0	1	31	1	0	44	3
Single vehicle only	46	51	41	18	48	25	32	23	16	29	329	22
Head-on conflict	30	25	27	27	34	21	29	10	28	6	237	16
Head-on right turn	27	29	21	24	16	15	16	6	15	9	178	12
Angle, both straight	17	12	10	13	10	8	12	14	6	5	107	7
Angle, right turn	30	23	16	21	33	26	26	0	19	15	209	14
Rear end, straight	21	10	13	7	9	9	4	5	6	10	94	6
Rear end, right turn	6	10	7	7	5	2	5	2	3	0	47	3
Rear end, left turn'	1	1	2	1	0	0	0	1	0	0	6	0
Other	54	41	30	39	23	18	16	11	8	8	248	17
Total	235	204	168	159	181	124	141	103	102	82	1499	100

Table 18: Motorcyclist fatalities and serious injuries by year and primary collision type, 1997-2006

	1997	1998	1999	2000	2001	2002	2003	2004	2005	2006	Total	%
With a Pedestrian	6	2	2	3	4	1	2	33	2	0	55	3
Single vehicle only	73	76	60	30	69	39	52	42	39	39	519	26
Head-on conflict	48	30	36	35	49	32	47	23	43	10	353	18
Head-on right turn	30	30	24	25	17	19	19	6	15	13	198	10
Angle, both straight	18	12	11	16	13	14	14	19	6	7	130	7
Angle, right turn	32	23	18	24	36	29	29	5	26	19	241	12
Rear end, straight	22	12	14	11	10	9	5	8	6	10	107	5
Rear end, right turn	8	12	8	7	6	3	6	2	4	1	57	3
Rear end, left turn'	1	1	2	2	0	0	0	1	0	1	8	0
Other	65	43	36	45	27	22	22	14	17	11	302	15
Total	303	241	211	198	231	168	196	153	158	111	1970	100

Working To Save Lives

Údarás Um Shábháilteacht Ar Bhóithre Road Safety Authority

Páirc Ghnó Ghleann naMuaidhe, Cnoc an tSabhaircín,
Bóthar Bhaile Átha Cliath, Béal an Átha, Co.Mhaigh Eo.
Moy Valley Business Park, Primrose Hill, Dublin Road,
Ballina, Co. Mayo.

local: 1890 50 60 80 fax: (096) 25 252

email: info@rsa.ie website: www.rsa.ie