



RSA

ANNUAL NATIONAL SEATBELT SURVEY

Adult & Child Seatbelt Survey Results 2008

Road Safety Authority
July 2009

Údarás Um Shábháilteacht Ar Bhóithre
Road Safety Authority

Contents

Page

EXECUTIVE SUMMARY	A
KEY FINDINGS OF SEATBELT SURVEY	B
DEFINITIONS	C
1 SEATBELT SURVEY 2008	1
1.1 Introduction	1
1.2 Background	1
1.3 Survey methodology	1
2 ADULT SEATBELT SURVEY RESULTS	3
2.1 Overview	3
<i>Table 2.1: Adult seatbelt wearing by driver / passenger class and gender, 2008</i>	3
<i>Figure 2.1: Adult seatbelt wearing by driver / passenger class, 2008</i>	3
2.2 Front seatbelt wearing rates – driver and passenger	3
<i>Figure 2.2: Driver and front seat wearing rates (%) by gender and year</i>	4
2.3 Rear seatbelt wearing rates	4
<i>Table 2.3: Rear seatbelt wearing rates (%) for adults, 2005 to 2008</i>	4
2.4 Association between driver and front passenger seatbelt usage	5
<i>Table 2.4: Association between the driver and front seat passenger seatbelt usage, 2008</i>	5
2.5 Seatbelt wearing rates by road type	6
<i>Table 2.5: Driver and front seat passenger wearing rates (%) by road class and year</i>	6
<i>Figure 2.5a: Trend in driver's seatbelt wearing rates by road type, 1991-2008</i>	6
<i>Figure 2.5b: Driver seatbelt wearing rates (%) by gender and road type, 2008</i>	7
3 PRIMARY AND SECONDARY SCHOOL SEATBELT SURVEY RESULTS	8
3.1 Overview	8
<i>Table 3.1a: Summary of seatbelt wearing for children by gender, 2008</i>	8
<i>Table 3.1b: Summary of seatbelt wearing for children by time period, school type, seat occupied and gender, 2008</i>	9
3.2 Primary school seatbelt wearing rates	9
<i>Table 3.2a: Primary schools – rear seatbelt wearing rates, 2003 to 2008</i>	9
<i>Table 3.2b: Primary schools – front seatbelt wearing rates, 2003 to 2008</i>	10
3.3 Secondary school seatbelt wearing rates	10
<i>Table 3.3a: Secondary schools – front seatbelt wearing rates, 2003 to 2008</i>	10
<i>Table 3.3b: Secondary schools – rear seatbelt wearing rates, 2003 to 2008</i>	10

3.4	Wearing rates by time of day	11
	<i>Figure 3.4a: Seatbelt wearing for school children by time period and school type, 2008</i>	11
	<i>Figure 3.4b: Seatbelt wearing for school children by time period, school type and seat occupied, 2008</i>	12
4	TABLES - ADULT SEATBELT WEARING	13-24
	<i>Table 4a: Adult seatbelt wearing survey locations (national roads)</i>	
	<i>Table 4b: Adult seatbelt wearing survey locations (urban roads)</i>	
	<i>Table 4c: Adult seatbelt wearing survey locations (regional roads)</i>	
	<i>Table 4d: Adult seatbelt wearing survey locations (county roads)</i>	
	<i>Table 4e: Adult seatbelt wearing for drivers by gender, 2008</i>	
	<i>Table 4f: Adult seatbelt wearing for all passengers by gender, 2008</i>	
	<i>Table 4g: Adult seatbelt wearing for front seat passengers by gender, 2008</i>	
	<i>Table 4h: Adult seatbelt wearing for rear seat passengers by gender, 2008</i>	
	<i>Table 4i: Driver wearing rates (%) by gender and road type, 2008</i>	
5	TABLES - PRIMARY AND SECONDARY SCHOOL SEATBELT WEARING	25-28
	<i>Table 5a: Child seatbelt wearing survey locations</i>	
	<i>Table 5b: Summary of seatbelt wearing for children by gender, 2008</i>	
	<i>Table 5c: Summary of seatbelt wearing for children by time period, school type, seat occupied and gender, 2008</i>	
	<i>Table 5d: Seatbelt wearing for children by school attended and gender, 2008</i>	
	APPENDIX 1: Data Collection Sheet for Seatbelt Survey	29
	APPENDIX 2: Surveyors' Instructions	30

A - Executive Summary

Overview

Overall adult seatbelt wearing rates reach the highest level recorded at 89%

In 2008, the Road Safety Authority (RSA) conducted a national seatbelt observational survey on Irish roads. Seatbelt usage and gender were recorded from motorists travelling along a selected sample of roads. Data was recorded from all car drivers, light goods vehicle drivers and adult front and rear passengers. Separate surveys for primary school and secondary school children travelling in the front or rear seat were also conducted.

Adult Wearing Rates

The survey was conducted among 16,413 adults occupying the front seats of vehicles, of which 13,521 (82%) were drivers. In addition, 586 adults occupying rear seats were observed.

In 2008, 89% of adults (drivers, front and rear passengers) were recorded wearing a seatbelt – the highest rate recorded to date. 90% of drivers observed were wearing a seatbelt, a 2% improvement on 2007 wearing rates. Seatbelt surveys conducted in previous years revealed the following wearing rates for drivers:

- 2006 and 2005 - 86 %
- 2003 - 85 %
- 2002 - 71 %
- 1999 - 55 %
- 1991 - 52 %

Compared with 2007, there was no change in seatbelt wearing rates for females occupying the front seat in 2008. However, the survey showed a 2% increase in the number of males wearing seatbelts.

The 2008 nationwide estimates for drivers' seatbelt use by road type were 91% for urban national primary, 88% for urban national secondary, 89% for rural national primary, 89% for rural national secondary, 90% for regional roads and 84% for county roads.

Seatbelt wearing rates for both primary and secondary pupils are up since 2007

While front seatbelt wearing rates have gone up, wearing rates in rear seats in 2008 (78%) have fallen by 6% since 2007 (84%). Wearing rates for both males and females are lower in 2008 than in 2007. However, wearing rates in 2008 for rear seat belts are still higher than in 2005 and 2006.

Primary and Secondary School Seatbelt Wearing Rates

At 74%, rear seatbelt wearing rates for primary school pupils saw an increase of 4% on wearing rates in 2007 (70%). Secondary school pupils showed a more dramatic increase with a 72% wearing rate recorded for rear seatbelts, up 9% on 2007 (63%).

B - Key Findings of Seatbelt Survey

Rear seatbelt wearing rates fall by 6% since 2007

Adult Drivers and Passengers

- At 89%, overall seatbelt wearing rates for adults (drivers, front and rear passengers) are the highest ever recorded;
- In 2008, 90% of drivers were observed wearing a seatbelt, a 2% improvement on 2007 wearing rates;
- While front seatbelt wearing rates have gone up, the rear seatbelt wearing rate for adults has decreased by 6% from 84% in 2007 to 78% in 2008;
- Front seat passengers were 2.3 times more likely to be wearing a seatbelt compared to rear seat passengers;
- Drivers were less likely to be wearing a seatbelt when travelling on rural national roads, regional and county roads, despite most fatal and serious injury collisions normally occurring on these roads.

Wearing Rates by Gender

- Female overall front seat wearing rates show no change in 2008; however, the number of males wearing seatbelts in the front of the car has increased by 2% to 87% in 2008;
- However, only 35% of male drivers with unbelted male passengers were observed wearing their seatbelts;
- The results also suggest that both male and female drivers are more likely to wear a seatbelt if the front seat passenger is belted up;
- Female drivers were two times more likely to be wearing their seatbelt compared to male drivers.
- Rear seatbelt wearing rates for both males and females are lower in 2008 than in 2007 but are still higher than 2005 and 2006;
- Women are more likely than men to belt up in rear seats, with wearing rates of 83% and 71% respectively.

Seatbelt Wearing by Road Type

- Drivers were 2.4 times more likely to be wearing a seatbelt when travelling on Cork urban roads, 2.1 times more likely to be wearing a seatbelt when travelling on Dublin urban roads and 2.3 times more likely to be wearing a seatbelt when travelling on Dun Laoghaire urban roads compared to when driving on urban national primary roads;

- However, drivers were less likely to be wearing a seatbelt when travelling on rural national roads, regional and county roads despite most fatal and serious injury collisions normally occurring on these roads.

Primary and Secondary School Wearing Rates

- Seatbelt wearing rates for primary and secondary school-goers are up on last year's figures;
- At 74%, rear seatbelt wearing rates for primary school pupils saw an increase of 4% on wearing rates in 2007 (70%);
- Secondary school students showed a more dramatic increase with a 72% wearing rate recorded for rear seatbelts, up 9% on 2007 (63%);
- Front seatbelt wearing rates for primary school pupils was also up with an 86% wearing rate recorded in 2008, an improvement of 6% on 2007 (80%);
- Seatbelt wearing rates for front seat passengers attending secondary school was recorded at 87%, an improvement of 9% on 2007 wearing rates;
- Female compliance rates continue to be higher than the equivalent male rates.

C - Definitions

Road Classifications in the Republic of Ireland

Roads are the dominant mode of transport in Ireland accounting for 96% of passenger traffic and 89% of freight transport.

National roads consist of **National Primary** and **National Secondary roads**. They account for only 6% of the total road network despite carrying over 45% of traffic. A national road (including a motorway) is denoted by the letter N or M (e.g. N7, M50).

- National Primary roads are major long distance through-roads linking the principal ports/airports, cities and large towns;
- National Secondary roads are medium distance through-roads connecting important towns and linking up to the national primary roads.

Non-national roads consist of **regional** roads and **local** roads which are important as our low density of population creates a high dependence on the local roads system. A non-national road is denoted by the letter L or R (e.g. L3421, R416).

Regional roads provide the main links between national roads. Local roads include all other urban and rural roads. Regional and local roads account for 94% of the total road network and carry over 55% of traffic.

An **arterial road** is a moderate or high-capacity road usually on the approach to urban areas. For this study, they can be regarded as the stretch of roads before entering towns and villages. They are generally identified by either a 50 km/h or a 60 km/h speed limit.

Residential roads are roads which go through business, shopping and residential areas of cities and towns. A default speed limit of 50 km/h applies to such roads and is sometimes referred to as a "build up speed limit". As these are default speed limits on these roads, they are not always indicated by a speed limit sign.

1 Seatbelt Survey 2008

1.1 Introduction

Wearing a seatbelt is one of the most effective ways of protecting you in a crash, therefore helping to reduce the number of deaths and serious injuries on our roads. However, as previous surveys have shown, not everybody wears a seatbelt when they are travelling in their vehicle. Under the Government Road Safety Strategy, 2007 – 2012, the Road Safety Authority (RSA) is tasked with carrying out national surveys on the rates of seatbelt wearing among drivers and passengers. The results of these surveys are used to monitor trends, determine the effectiveness of safety initiatives and inform the ongoing review of public policy in relation to road safety.

12% of all car drivers killed in 2007 were not wearing seatbelts

1.2 Background

In 1991, the Environmental Research Unit in Ireland carried out a nationwide survey of seatbelt wearing rates and traffic speeds. This was the first survey of its kind and covered the entire road network. In 1999, the National Roads Authority (NRA) commissioned ARUP Consulting Engineers and Pavement Management Services (PMS) to undertake separate surveys of free speeds in rural and urban areas. A survey was also undertaken to monitor seatbelt wearing rates. Three reports were subsequently published - Free Speeds on Rural Roads 1999; Free Speeds on Urban Roads 1999 and Seatbelt Wearing Rates 1999.

The NRA in 2002, 2003 and 2005, and the RSA in 2006 and 2007, carried out nationwide surveys of free speeds (Urban and Rural) and seatbelt wearing rates. These surveys were based on the methodology outlined in the 1999 reports.

16% of all car front seat passengers killed in 2007 were not wearing seatbelts

1.3 Survey methodology

This survey was carried out in two distinct parts with independent observations of seatbelt wearing by:

- Adult drivers and passengers
- Child passengers (primary and secondary school)

The methods used in this study are the same as those used in the Seatbelt Wearing Rates 1999 report and subsequent surveys. A total of 108 sites were selected where an average of 125 cars and light goods vehicles were surveyed at each location. This gave a total sample size of over 13,000. This sample size is sufficient to give a range of accuracy of approximately plus or minus 1% on the overall driver and front seat wearing rate figure.

For the purposes of the survey, the network of public roads was broken down into eleven separate classes of roads. As with previous surveys, members of

An Garda Síochána, driving instructors, taxi drivers and children were excluded from the front and rear adult seatbelt surveys.

Surveyors were instructed to continue the survey until the target sample coverage was exceeded or for a maximum of three hours if the quota was not reached.

As noted in previous surveys, the results may be biased as the survey was carried out during daylight hours in the summer months; seatbelt wearing rates may differ according to the time of day, day of the week and month. For example, during the summer months, there is a higher level of tourist activity on the roads who may be more or less likely to wear their seatbelts than residents. Similarly, seatbelt wearing rates at the time of day that the surveys were carried out (mostly mid-morning or mid-afternoon) may not be fully representative of average daily wearing rates.

In addition to the front and rear adult seatbelt surveys, the 2008, 2007, 2006, 2005 and 2003 studies included a separate seatbelt survey of students attending primary and secondary schools.

The front and rear adult seatbelt survey locations are shown in Section 4.

Roadside observations to monitor adult seatbelt wearing rates were made at 108 sites throughout Ireland. Tables 4a to 4d show the locations of the adult survey sites. Roadside observations of child seatbelt wearing rates were carried out at 28 schools across the country (see Table 5a). The data collection sheets and surveyor instructions are in Appendix 1 and Appendix 2 respectively.

The data was collected by the Dublin-based specialist traffic data collection company, Nationwide Data Collection. The data was then forwarded to the transport planning consultancy, Colin Buchanan and Partners, who examined it in detail, looking at the consistency of observations within and between survey sites.

2 Adult seatbelt survey results

2.1 Overview

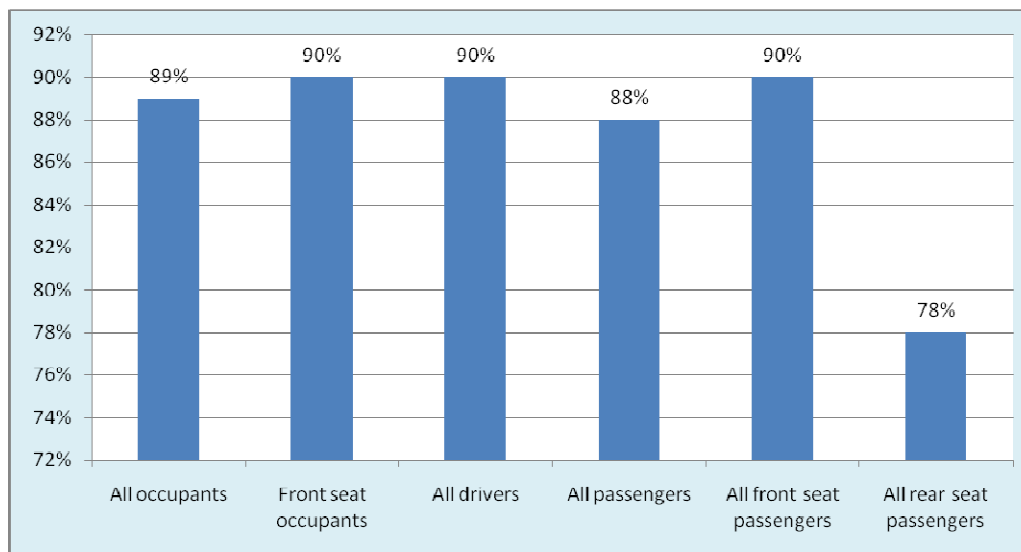
16,999 individual adult drivers and passengers were observed at 108 sites throughout Ireland in 2008. The findings are summarised in the tables and figures in this section. Overall, a 90% seatbelt usage rate for front occupants of cars and light goods vehicles was observed. Table 2.1 and Figure 2.1 summarise the overall compliance rates by driver/passenger class and gender. Compliance by drivers is now 90% which is 2% higher than 2007.

90% of all front seat occupants observed on Irish roads in 2008 were buckled up

Table 2.1: Adult seatbelt wearing by driver / passenger class and gender, 2008

Driver/passenger class	Number of observations	Seat belt worn				% compliance		
		Female		Male		Female	Male	All
		No	Yes	No	Yes			
All occupants	16,999	517	6,790	1,294	8,398	93%	87%	89%
Front seat occupants	16,413	460	6,503	1,225	8,225	93%	87%	90%
All drivers	13,521	347	4,873	1,042	7,259	93%	87%	90%
All passengers	3,478	170	1,917	252	1,139	92%	82%	88%
All front seat passengers	2,892	113	1,630	183	966	94%	84%	90%
All rear seat passengers	586	57	287	69	173	83%	71%	78%

Figure 2.1: Adult seatbelt wearing by driver / passenger class, 2008

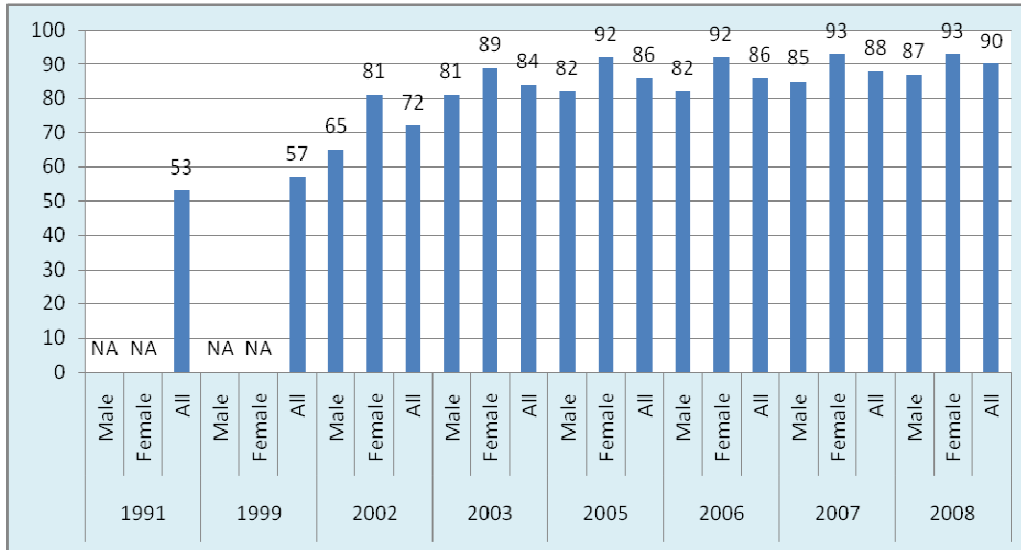


2.2 Front seatbelt wearing rates – driver and passenger

Adult front seatbelt usage, at the different observation road types, ranged from 88% to 97%. Front seat passengers were 2.3 times more likely to be wearing seatbelt compared to rear seat passengers. No difference was found among observed seatbelt use for drivers compared to front seat passengers.

No significant change was found in female front seatbelt usage rates in 2008 compared with 2007. However, female drivers were two times more likely to wear their seatbelt compared to male drivers.

Figure 2.2: Driver and front seat wearing rates (%) by gender and year



2.3 Rear seatbelt wearing rates

The rear seatbelt wearing rate for adults has decreased from 84% in 2007 to 78% in 2008. However, the 2008 rate is still higher than was recorded in 2006 and 2005. Women are more likely than men to belt up in rear seats, with wearing rates of 83% and 71% respectively.

Table 2.3 shows the results of the adult rear seatbelt surveys conducted from 2005 to 2008. Sample sizes for each location were relatively small, partly because of the low proportion of cars with an adult in the rear seat and also reflecting the difficulty surveying rear seats.

Table 2.3: Rear seatbelt wearing rates (%) for adults, 2005 to 2008

		Belt worn	No belt worn	Wearing Rate (%)
2008				
All Locations	Male	173	69	71
	Female	287	57	83
	All	460	126	78
2007				
All Locations	Male	306	75	80
	Female	422	63	87
	All	728	138	84
2006				
All Locations	Male	278	235	54
	Female	579	260	69
	All	857	495	63
2005				
All Locations	Male	137	208	40
	Female	247	243	50
	All	384	451	46

2.4 Association between driver and front passenger seatbelt usage

Table 2.4 shows the association between driver and front passenger seatbelt usage. The results suggest that both male and female drivers are more likely to be wearing a seatbelt if the front seat passenger is belted up. Wearing rates are lowest for male drivers, especially for those beside unbelted male passengers which, at 35%, is 1% less than in 2007.

Table 2.4: Association between the driver and front seat passenger seatbelt usage, 2008

	Male Driver Wearing Rates	Female Driver Wearing Rates	Overall Driver Wearing Rates
Driver alone	87%	93%	90%
Male passenger wearing	97%	98%	97%
Male passenger not wearing	35%	77%	41%
Female passenger wearing	96%	99%	97%
Female passenger not wearing	51%	52%	51%
Overall Wearing Rates	87%	93%	90%

Drivers were less likely to belt up if the front passenger was not belted up

2.5 Seatbelt wearing rates by road type

Drivers were 2.4 times more likely to be wearing a seatbelt when travelling on Cork urban roads, 2.1 times more likely to be wearing a seatbelt when travelling on Dublin urban roads and 2.3 times more likely to be wearing a seatbelt when travelling on Dun Laoghaire urban roads compared to when driving on urban national primary roads. However, they were less likely to be wearing a seatbelt when travelling on rural national roads, regional and county roads where most fatal and serious injury collisions normally occur. Table 2.5 and Figures 2.5a and 2.5b show the wearing rates on different classes of road.

Table 2.5: Driver and front seat passenger wearing rates (%) by road class and year

Year	Urban National Primary Roads	Urban National Secondary Roads	Rural National Primary Roads	Rural National Secondary Roads	Cork (Urban)	Dublin (Urban)	Dun Laoghaire (Urban)	Limerick (Urban)	Small Urban Areas	Regional Roads	County Roads
1991	60	41	67	53	32	58	68	59	40	61	44
1999	63	59	70	50	46	62	68	36	45	61	52
2002	79	66	79	67	69	75	72	74	60	75	67
2003	85	87	88	82	86	88	83	85	82	85	81
2005	93	76	87	88	85	93	91	86	86	86	79
2006	89	81	90	88	80	88	88	86	89	86	83
2007	89	84	88	87	89	89	87	79	90	88	91
2008	91	88	89	89	96	96	97	93	90	90	84

Figure 2.5a: Trend in driver's seatbelt wearing rates by road type, 1991-2008

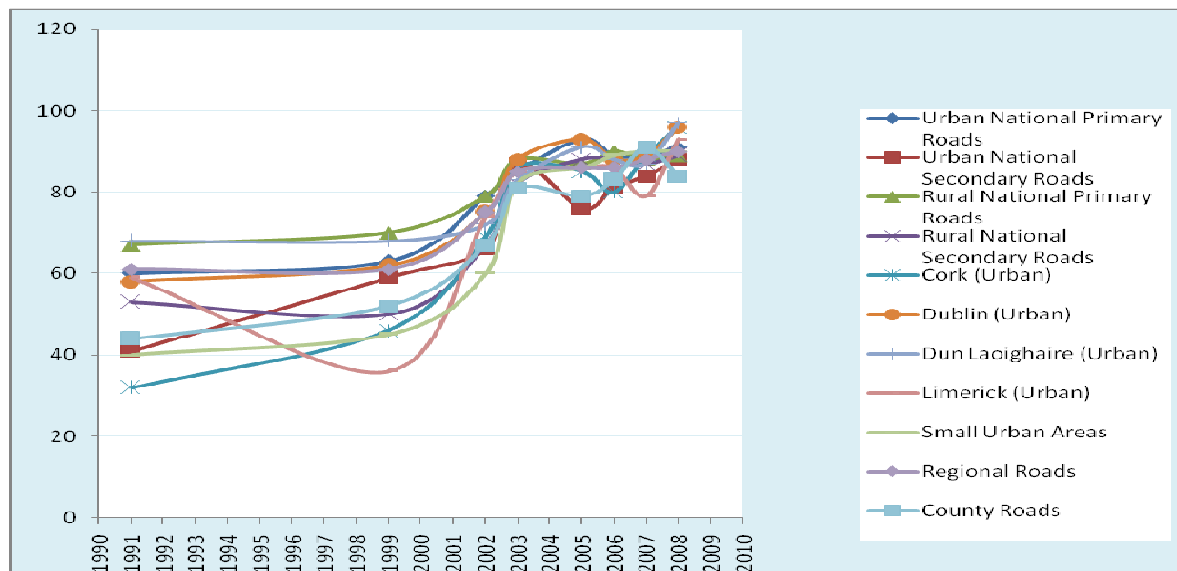
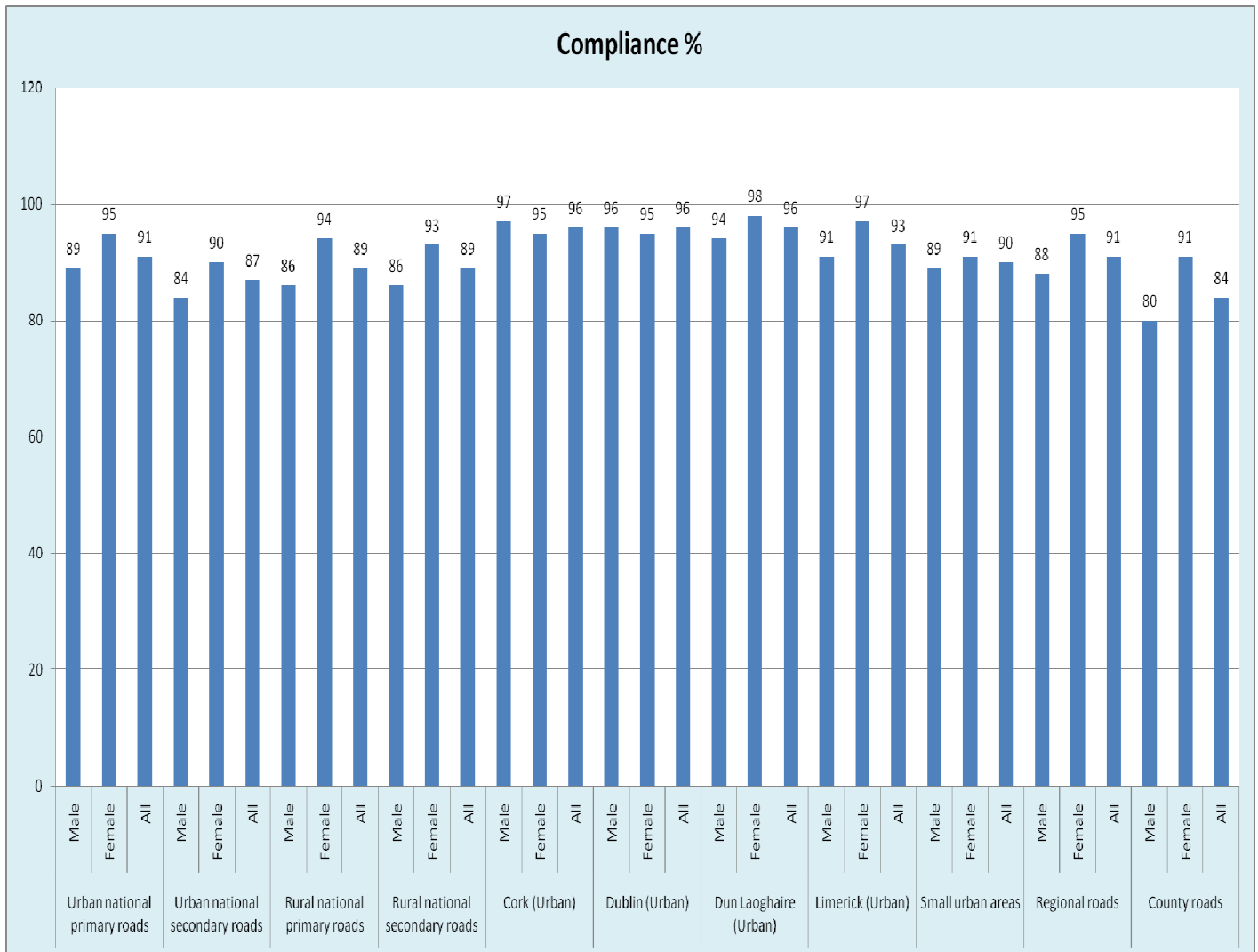


Figure 2.5b: Driver seatbelt wearing rates (%) by gender and road type, 2008



3 Primary and secondary school seatbelt survey results

3.1 Overview

In 2008, 4,316 children were observed as rear and front car seat passengers at 14 primary and 14 secondary schools throughout Ireland. Overall, an 80% seatbelt wearing rate was recorded among primary and secondary school-goers.

Compliance tends to be higher in the morning school run than it is during the afternoon. Front seat compliance continues to be higher than that for rear seat passengers. Tables 3.1a and 3.1b summarise the key points of the survey findings.

School children are more likely to buckle up if they are in the front seat

Table 3.1a: Summary of seatbelt wearing for children by gender, 2008

Time Period	School type	Total observations	Seat belt worn				% compliance		
			Female		Male		Female	Male	All
			No	Yes	No	Yes			
AM	Primary	959	96	457	76	330	83%	81%	82%
AM	Secondary	1410	116	666	124	504	85%	80%	83%
PM	Primary	848	110	383	103	252	78%	71%	75%
PM	Secondary	1099	136	514	112	337	79%	75%	77%
AM	All	2369	212	1123	200	834	84%	81%	83%
PM	All	1947	246	897	215	589	78%	73%	76%
All	Primary	1807	206	840	179	582	80%	76%	79%
All	Secondary	2509	252	1180	236	841	82%	78%	81%
All	All	4316	458	2020	415	1423	82%	77%	80%

Table 3.1b: Summary of seatbelt wearing for children by time period, school type, seat occupied and gender, 2008

School type	Time Period	Seat	Total obs	Seat belt worn				% Compliance		
				Female		Male		Female	Male	Both
				No	Yes	No	Yes			
Primary	AM	Front	406	21	201	22	162	91%	88%	89%
	AM	Rear	553	75	256	54	168	77%	76%	77%
	PM	Front	296	32	134	24	106	81%	82%	81%
	PM	Rear	552	78	249	79	146	76%	65%	72%
Primary	Both	Front	702	53	335	46	268	86%	85%	86%
	Both	Rear	1105	153	505	133	314	77%	70%	74%
Secondary	AM	Front	811	42	387	50	332	90%	87%	89%
	AM	Rear	599	74	279	74	172	79%	70%	75%
	PM	Front	606	54	282	35	235	84%	87%	85%
	PM	Rear	493	82	232	77	102	74%	57%	68%
Secondary	Both	Front	1417	96	669	85	567	87%	87%	87%
	Both	Rear	1092	156	511	151	274	77%	64%	72%
Both	Both	Front	2119	149	1004	131	835	87%	86%	87%
	Both	Rear	2197	309	1016	284	588	77%	67%	73%
Both	Both	Both	4316	458	2020	415	1423	82%	77%	80%

3.2 Primary school seatbelt wearing rates

74% of primary school pupils were observed wearing their seatbelt in the rear of the car, an increase of 4% on 2007 figures (70%). Front seatbelt wearing rates for the same group was also up with an 86% wearing rate recorded in 2008, an improvement of 6% on 2007 (80%).

Tables 3.2a and 3.2b show the seatbelt wearing rates, both front and rear, for primary school pupils over the six year period, 2003 to 2008.

Table 3.2a: Primary schools – rear seatbelt wearing rates, 2003 to 2008

	Not Wearing	Wearing	Wearing rate (%)
Female	153	505	77
Male	133	314	70
Total 2008	286	819	74
Total 2007	183	416	70
Total 2006	202	360	64
Total 2005	170	251	60
Total 2003	216	203	48

Table 3.2b: Primary schools – front seatbelt wearing rates, 2003 to 2008

	Not Wearing	Wearing	Wearing rate (%)
Female	53	335	86
Male	46	268	85
Total 2008	99	603	86
Total 2007	85	330	80
Total 2006	94	294	76
Total 2005	126	288	70
Total 2003	133	283	68

3.3 Secondary school seatbelt wearing rates

For secondary school students, the seatbelt wearing rate for rear seat passengers is 72%, 9% higher than the 63% recorded in 2007. Seatbelt wearing rates for front seat passengers attending secondary school is 87%, an improvement of 9% on 2007 wearing rates (it is noted that the 2007 figures indicated a large fall in compliance for secondary school pupils).

Female compliance rates continue to be higher than the equivalent male rates.

Tables 3.3a and 3.3b show the seatbelt wearing rates, both front and rear, for secondary school pupils over the six year period, 2003 to 2008.

Table 3.3a: Secondary schools – front seatbelt wearing rates, 2003 to 2008

	Not Wearing	Wearing	Wearing rate (%)
Female	96	669	87
Male	85	567	87
Total 2008	181	1236	87
Total 2007	201	727	78
Total 2006	91	655	88
Total 2005	295	623	68
Total 2003	211	343	62

Table 3.3b: Secondary schools – rear seatbelt wearing rates, 2003 to 2008

	Not Wearing	Wearing	Wearing rate (%)
Female	156	511	77
Male	151	274	64
Total 2008	307	785	72
Total 2007	216	369	63
Total 2006	146	454	76
Total 2005	271	325	55
Total 2003	203	157	44

3.4 Wearing rates by time of day

Compliance tends to be higher in the morning school run than it is during the afternoon. Primary school pupils were 1.5 times more likely, and secondary school pupils 1.4 times more likely, to wear their seatbelt in the morning when compared to the afternoon. No difference was found among observed seatbelt use for primary school children compared to secondary school children.

Figure 3.4a: Seatbelt wearing for school children by time period and school type, 2008

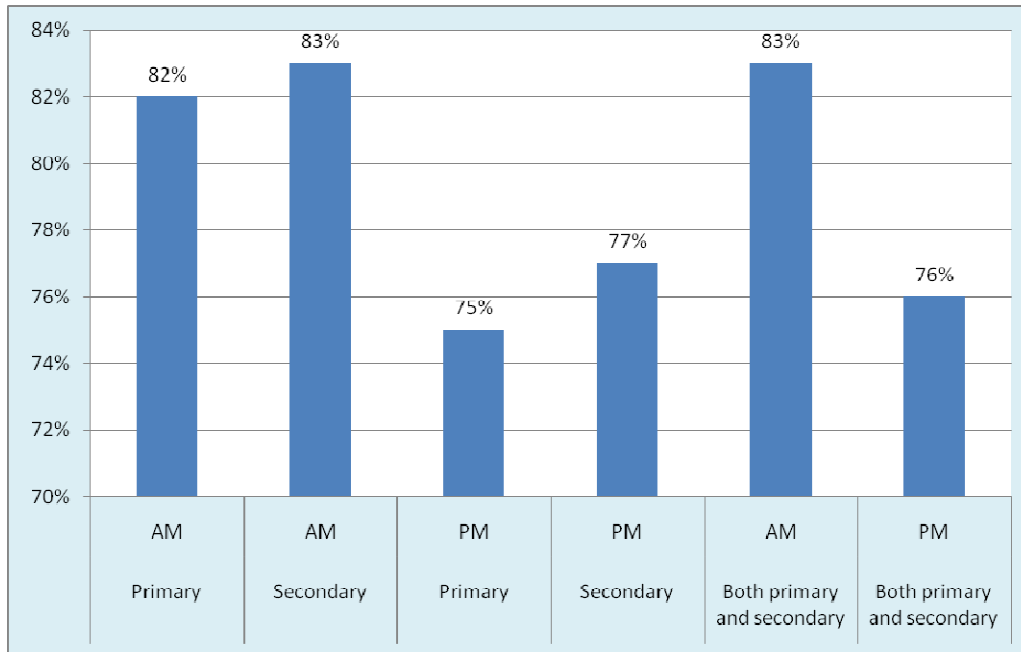
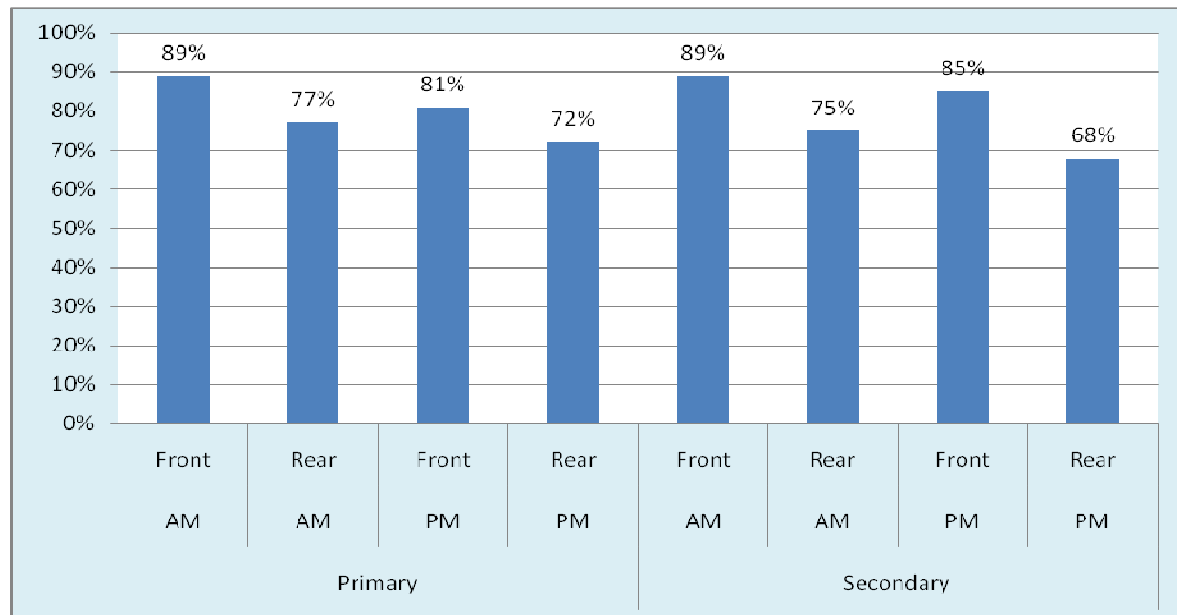


Figure 3.4b: Seatbelt wearing for school children by time period, school type and seat occupied, 2008



4 Tables - Adult Seatbelt Wearing

Table 4a: Adult seatbelt wearing survey locations (national roads)

Road Type	Code	Road	Section	Location
Urban national primary roads	28	N7	48	Inchicore
	27	N4	42	Palmerstown Avenue junction
	24	N7	20C	Portlaoise
	22	N22	5	Killarney
	29	N6	2C	Galway
	20	N8	8	Fermoy
Urban national secondary roads	15	N60	1	Westport
	26	N51	7	Navan
Rural national primary roads	19	N25	7	Near Wexford town
	23	N9	01B	Waterford
	10	N9	10	North of Waterford
	16	N2	10	Carrickmacross
	11	N15	1	Lifford
	12	N15	7	Donegal town
	21	N15	11	Ballyshannon
	25	N17	12	Julianstown – Drogheda
	6	N4	16	Drumsna – Drumod
	17	N6	22	Moate – Horsleap
	9	N24	20	Monard – Oola
	14	N21	3	Castleisland – Tralee
	13	N17	15	Galway – Claregalway
Rural national secondary roads	3	N62	4	Thurles – Templemore
	8	N62	5	Templemore
	4	N56	9	Dungloe
	2	N57	4	Foxford – Swinford
	7	N55	8	Mostrim – Granard
	5	N65	3	Portumna
	18	N52	2	Nenagh
	1	N67	4	Kilkee

Table 4b: Adult seatbelt wearing survey locations (urban roads)

City	Code	Street
Cork	101	Monahan Road
	102	Mount Pleasant Road
	103	Clanricard Road
	104	North Main Street
	105	Cathedral Road
Dublin	106	Walkinstown Park
	107	St Finbarr's Road
	108	Old County Road
	109	Kinvara Avenue
	111	Tonglee Road
	112	Richmond Road
	113	Dolphin Road
	114	Pearse Street
	115	Malahide Road
	116	Mount Street Upper
	117	Fairview
	Dun Laoighire	118
119		Sallynoggin Road
120		Sandycove Road
Limerick	121	Claughan Fort
	122	Brookville Avenue
	123	Shelbourne Road
Galway	201	Seapoint Promenade
	202	Fr. Bourke Road
	203	Dominick Street
Athlone	205	Strand Road
Kilkenny	206	Michael Street
Carrick-on-Suir	207	Cattle Mart
Longford	208	St. Josephs Road
Longford	209	Great Water Street
Skibbereen	210	High Street

Table 4c: Adult seatbelt wearing survey locations (regional roads)

Code	Road	City	Street
320	R576	Cork	Coolagh Junction
321	R262	Donegal	Donegal – Glenties
322	R671	Waterford	Knocknaskadagh
327	R474	Clare	Aug Na Glanna Bridge
328	R339	Galway	Monivea
329	R336	Galway	Irish College Spiddal
330	R414	Kildare	Mountrice
331	R697	Kilkenny	O'Leary's Cross
332	R695	Kilkenny	Damma
333	R513	Limerick	Kilglass
334	R319	Mayo	Mulrany-Achill
335	R178	Monaghan	Rakeragh
336	R165	Monaghan	Drumbear
337	R437	Offaly	Broughall
338	R440	Offaly	Cadamstown
339	R400	Westmeath	Mullingar
340	R392	Westmeath	Mullingar
341	R760	Wicklow	Ballyvourney Road

Table 4d: Adult seatbelt wearing survey locations (county roads)

Code	County	Location
301	Cork	Bartlemy
302	Cork	Dirk-Long Strand
303	Laois	Castletown
304	Limerick	Ballyshonnaig
305	Waterford	Curraghkiely
306	Cork	Ballyhooly
307	Donegal	McIvors Farm
308	Longford	Killenboy
309	Clare	Caherleen
310	Cork	Meelin
311	Donegal	Letterkenny – Trentagh
312	Donegal	Castlemurray
313	Galway	Doonwood Golflinks
314	Kerry	Drumclough School
315	Laois	Killenure
316	Roscommon	Castleplunkit
317	Westmeath	Knockaville
318	Wexford	Dunganstown
319	Wexford	Ballytarsna
323	Cork	Cahirbarnagh
324	Cork	Glanworth
325	Donegal	Clonmany – Lennan
326	Offaly	Rahan – Ballycumber
342	Cork	Ballyknoskane
343	Cork	Mallymackeagh
344	Kerry	Ballineany
346	Waterford	Cappaquin – Youghal
401	Dublin	Tobersoole Lane
402	Dublin	South Strand Road, Rush
403	Dublin	Millview Road Malahide

Table 4e: Adult seatbelt wearing for drivers by gender, 2008

site ref	obs	Seat belt worn				% compliance	
		Female		Male		Female	Male
		No	Yes	No	Yes		
1	140	4	45	11	80	92%	88%
2	140	2	58	15	65	97%	81%
3	140	2	49	9	80	96%	90%
4	140	7	56	18	59	89%	77%
5	140	4	53	11	72	93%	87%
6	140		38	9	93	100%	91%
7	140	4	36	4	96	90%	96%
8	140	4	49	19	68	92%	78%
9	140	4	38	27	71	90%	72%
10	140	1	52	2	85	98%	98%
11	140	7	24	17	92	77%	84%
12	140	5	38	26	71	88%	73%
13	140	6	61	7	66	91%	90%
14	140		40	4	96	100%	96%
15	140	12	62	13	53	84%	80%
16	140	9	54	21	56	86%	73%
17	140	4	58	15	63	94%	81%
18	140	2	53	7	78	96%	92%
19	140		72	1	67	100%	99%
20	140	2	35	12	91	95%	88%
21	140	8	39	12	81	83%	87%
22	140		63	4	73	100%	95%
23	140		82		58	100%	100%
24	140	3	45	12	80	94%	87%
25	140	2	66	13	59	97%	82%
26	140	2	65	9	64	97%	88%
27	140	1	36	9	94	97%	91%
28	140	3	35	13	89	92%	87%
29	140	3	37	12	88	93%	88%
101	140	2	37	1	100	95%	99%
102	140	8	55	2	75	87%	97%
103	140		67	2	71	100%	97%
104	140	2	43	8	87	96%	92%
105	140		43	2	95	100%	98%
106	78	1	48	1	28	98%	97%
107	91	3	54	2	32	95%	94%
108	140	7	56	9	68	89%	88%
109	140	10	69	11	50	87%	82%
111	140		41		99	100%	100%
112	140		34		106	100%	100%
113	140	1	47	4	88	98%	96%
114	140		34	3	103	100%	97%
115	140		37		103	100%	100%
116	140		44	1	95	100%	99%
117	140	4	66	5	65	94%	93%
118	140		70	6	64	100%	91%
119	140		48	2	90	100%	98%
120	140	3	50	6	81	94%	93%
121	140	2	49	9	80	96%	90%
122	140		42	7	91	100%	93%
123	140	3	47	8	82	94%	91%
201	140	5	47	10	78	90%	89%
202	140	19	55	13	53	74%	80%
203	140	6	48	9	77	89%	90%
205	140	2	94	1	43	98%	98%
206	140	2	48	8	82	96%	91%
207	140	3	61	11	65	95%	86%
208	140	6	46	3	85	88%	97%
209	140	5	64	6	65	93%	92%
210	140	6	55	15	64	90%	81%
301	48	2	11	6	29	85%	83%
302	61	4	12	4	41	75%	91%
303	140	16	37	36	51	70%	59%
304	140	2	62	16	60	97%	79%

305	15	1	1	6	7	50%	54%
306	137	1	46	7	83	98%	92%
307	140	4	35	23	78	90%	77%
308	140	2	48	13	77	96%	86%
309	140	5	51	7	77	91%	92%
310	127	23	52	13	39	69%	75%
311	131	2	29	23	77	94%	77%
312	44	1	15	19	9	94%	32%
313	76	2	32	2	40	94%	95%
314	51	1	10	13	27	91%	68%
315	140	5	53	15	67	91%	82%
316	117		30	14	73	100%	84%
317	140		56	5	79	100%	94%
318	9		1	4	4	100%	50%
319	140	6	43	26	65	88%	71%
320	140	2	51	10	77	96%	89%
321	140	4	40	19	77	91%	80%
322	75		17	6	52	100%	90%
323	23		4	4	15	100%	79%
324	140	2	40	26	72	95%	73%
325	140	10	49	33	48	83%	59%
326	140	1	48	17	74	98%	81%
327	140	1	51	5	83	98%	94%
328	140		51	2	87	100%	98%
329	140	5	49	6	80	91%	93%
330	140	4	57	12	67	93%	85%
331	140	2	57	8	73	97%	90%
332	140	4	52	14	70	93%	83%
333	140	1	44	13	82	98%	86%
334	140	8	75	8	49	90%	86%
335	140	3	73	18	46	96%	72%
336	140	2	67	19	52	97%	73%
337	58	1	25	4	28	96%	88%
338	96	2	35	7	52	95%	88%
339	140	3	44	7	86	94%	92%
340	140	1	31	4	104	97%	96%
341	140	2	44	12	82	96%	87%
342	35	2	11	2	20	85%	91%
343	75	1	20	7	47	95%	87%
344	140	1	64	4	71	98%	95%
346	86	3	22	11	50	88%	82%
401	16		11		5	100%	100%
402	32	2	11	6	13	85%	68%
403	140	2	68	9	61	97%	87%
All	13521	347	4873	1042	7259	93%	87%

Table 4f: Adult seatbelt wearing for all passengers by gender, 2008

site ref	obs	Seat belt worn				% compliance	
		Female		Male		Female	Male
		No	Yes	No	Yes		
1	34	3	12	3	16	80%	84%
2	41		25	3	13	100%	81%
3	41	2	22	2	15	92%	88%
4	60	5	41	4	10	89%	71%
5	29	5	16	1	7	76%	88%
6	37		25	3	9	100%	75%
7	25		14	1	10	100%	91%
8	32		15	3	14	100%	82%
9	33	1	18	8	6	95%	43%
10	20		10	1	9	100%	90%
11	52	2	32	3	15	94%	83%
12	29	2	15	5	7	88%	58%
13	101	8	58	10	25	88%	71%
14	49	2	31	1	15	94%	94%
15	43	1	30	3	9	97%	75%
16	22	1	14		7	93%	100%
17	29	2	11		16	85%	100%
18	32	1	25	1	5	96%	83%
19	39		29		10	100%	100%
20	30	4	14		12	78%	100%
21	52	2	22	9	19	92%	68%
22	32		16	1	15	100%	94%
23	20		10		10	100%	100%
24	36	2	24	1	9	92%	90%
25	28	1	23		4	96%	100%
26	23	1	18	1	3	95%	75%
27	76	6	25	14	31	81%	69%
28	37	3	17	3	14	85%	82%
29	24	5	9	4	6	64%	60%
101	23		8	1	14	100%	93%
102	23		14	1	8	100%	89%
103	45		24		21	100%	100%
104	33	3	14	2	14	82%	88%
105	64	2	44		18	96%	100%
106	20		14		6	100%	100%
107	24		19		5	100%	100%
108	40	7	22	2	9	76%	82%
109	14		10	2	2	100%	50%
111	30		18	1	11	100%	92%
112	42	1	16	1	24	94%	96%
113	46	1	31		14	97%	100%
114	31		21		10	100%	100%
115	33		18	1	14	100%	93%
116	35	1	21		13	95%	100%
117	11	1	6		4	86%	100%
118	36		27		9	100%	100%
119	43		21		22	100%	100%
120	22		17		5	100%	100%
121	37	1	19	2	15	95%	88%
122	41		25	1	15	100%	94%
123	21	2	8	2	9	80%	82%
201	42	4	19	5	14	83%	74%
202	75	5	30	6	34	86%	85%
203	37	2	24		11	92%	100%
205	29		24		5	100%	100%
206	49	4	29	5	11	88%	69%
207	38	3	20	1	14	87%	93%
208	28		18	1	9	100%	90%
209	31	1	23		7	96%	100%
210	24	1	13	1	9	93%	90%
301	9	1	4	1	3	80%	75%
302	23	4	8	3	8	67%	73%
303	53	13	18	9	13	58%	59%
304	32		19	3	10	100%	77%

305	2			1	1	-	50%
306	28	1	9	2	16	90%	89%
307	47	1	29	3	14	97%	82%
308	37	1	21		15	95%	100%
309	26		16	1	9	100%	90%
310	31	6	9	4	12	60%	75%
311	33	1	9	7	16	90%	70%
312	13	2	4	6	1	67%	14%
313	23		12	1	10	100%	91%
314	14		5	6	3	100%	33%
315	30	1	23	1	5	96%	83%
316	32		16	1	15	100%	94%
317	23		12		11	100%	100%
318	1				1	-	100%
319	28	5	11	6	6	69%	50%
320	41	1	22	4	14	96%	78%
321	43	2	23	7	11	92%	61%
322	14		5	3	6	100%	67%
323	7	1	3	1	2	75%	67%
324	38	7	15	4	12	68%	75%
325	49	2	28	9	10	93%	53%
326	33		18	3	12	100%	80%
327	44	5	17	7	15	77%	68%
328	30		22		8	100%	100%
329	42	2	23	4	13	92%	76%
330	33	1	18	3	11	95%	79%
331	44		28		16	100%	100%
332	54		21	7	26	100%	79%
333	38	1	20	7	10	95%	59%
334	31	1	22		8	96%	100%
335	37		23	5	9	100%	64%
336	21	2	17		2	89%	100%
337	7		2		5	100%	100%
338	14		9	1	4	100%	80%
339	24		14		10	100%	100%
340	31	1	22		8	96%	100%
341	38	1	22	3	12	96%	80%
342	5		2	2	1	100%	33%
343	17		9	2	6	100%	75%
344	29		19	2	8	100%	80%
346	15	1	8		6	89%	100%
401	3	2		1		0%	0%
402	14	5	5	1	3	50%	75%
403	24	1	17	1	5	94%	83%
All	3478	170	1917	252	1139	92%	82%

Table 4g: Adult seatbelt wearing for front seat passengers by gender, 2008

Site	obs	Seat belt worn				% compliance	
		Female		Male		Female	Male
		No	Yes	No	Yes		
1	29	3	10	2	14	-	88%
2	35		22	3	10	-	77%
3	34	1	19	2	12	95%	86%
4	44	4	32	3	5	89%	63%
5	26	3	16		7	84%	-
6	36		24	3	9	-	75%
7	20		12		8	-	-
8	26		10	3	13	-	81%
9	31	1	18	6	6	95%	50%
10	20		10	1	9	-	90%
11	46	1	29	3	13	97%	81%
12	29	2	15	5	7	88%	58%
13	32	2	19	2	9	90%	82%
14	40	1	26	1	12	96%	92%
15	34	1	24	2	7	96%	78%
16	19	1	12		6	92%	-
17	24	2	10		12	83%	-
18	30	1	23	1	5	96%	83%
19	37		27		10	-	-
20	26	1	13		12	93%	-
21	35	2	14	6	13	88%	68%
22	29		15		14	-	-
23	19		10		9	-	-
24	29	1	20	1	7	95%	88%
25	25	1	20		4	95%	-
26	22		18	1	3	-	75%
27	40		16	3	21	-	88%
28	33	1	16	2	14	94%	88%
29	23	5	9	4	5	64%	56%
101	22		8	1	13	-	93%
102	23		14	1	8	-	89%
103	39		21		18	-	-
104	29	1	14	1	13	93%	93%
105	49		35		14	-	-
106	15		10		5	-	-
107	23		18		5	-	-
108	36	5	21	1	9	81%	90%
109	13		9	2	2	-	50%
111	28		16	1	11	-	92%
112	34		14		20	-	-
113	41		29		12	-	-
114	30		20		10	-	-
115	30		17		13	-	-
116	33	1	19		13	95%	-
117	10	1	5		4	83%	-
118	31		23		8	-	-
119	35		18		17	-	-
120	21		16		5	-	-
121	31	1	17	2	11	94%	85%
122	38		22	1	15	-	94%
123	20	2	8	2	8	80%	80%
201	39	3	18	5	13	86%	72%
202	37	4	14	3	16	78%	84%
203	34	2	21		11	91%	-
205	24		20		4	-	-
206	33	4	20	2	7	83%	78%
207	35	2	19	1	13	90%	93%
208	24		15	1	8	-	89%
209	28	1	21		6	95%	-
210	23	1	13	1	8	93%	89%
301	7	1	3		3	75%	-
302	13		8		5	-	-
303	39	10	12	7	10	55%	59%
304	32		19	3	10	-	77%
305	2		1	1	1	-	50%
306	27	1	9	2	15	90%	88%

307	43	1	26	3	13	96%	81%
308	33	1	19		13	95%	-
309	22		12	1	9	-	90%
310	25	4	8	3	10	67%	77%
311	28	1	8	5	14	89%	74%
312	12	2	4	5	1	67%	17%
313	20		11	1	8	-	89%
314	14		5	6	3	-	33%
315	25	1	20	1	3	95%	75%
316	26		12	1	13	-	93%
317	22		12		10	-	-
318	1				1	-	-
319	24	3	11	4	6	79%	60%
320	37	1	21	3	12	95%	80%
321	33	2	15	7	9	88%	56%
322	14		5	3	6	-	67%
323	5		3		2	-	-
324	31	3	13	3	12	81%	80%
325	38	2	21	7	8	91%	53%
326	28		16	2	10	-	83%
327	41	5	17	5	14	77%	74%
328	25		18		7	-	-
329	38	1	22	4	11	96%	73%
330	27	1	15	1	10	94%	91%
331	28		18		10	-	-
332	37		13	4	20	-	83%
333	38	1	20	7	10	95%	59%
334	30	1	21		8	95%	-
335	31		18	5	8	-	62%
336	18	2	14		2	88%	-
337	7		2		5	-	-
338	13		8	1	4	-	80%
339	22		14		8	-	-
340	29	1	20		8	95%	-
341	32		19	2	11	-	85%
342	5		2	2	1	-	33%
343	13		8		5	-	-
344	29		19	2	8	-	80%
346	14	1	7		6	88%	-
401	3	2		1		-	-
402	7	2	2	1	2	50%	67%
403	23	1	16	1	5	94%	83%
All	2892	113	1630	183	966	94%	84%

Table 4h: Adult seatbelt wearing for rear seat passengers by gender, 2008

site ref	obs	Seat belt worn				% compliance	
		Female		Male		Female	Male
		No	Yes	No	Yes		
1	5		2	1	2	100%	67%
2	6		3		3	100%	100%
3	7	1	3		3	75%	100%
4	16	1	9	1	5	90%	83%
5	3	2		1		0%	0%
6	1		1			100%	-
7	5		2	1	2	100%	67%
8	6		5		1	100%	100%
9	2			2		-	0%
11	6	1	3		2	75%	100%
13	69	6	39	8	16	87%	67%
14	9	1	5		3	83%	100%
15	9		6	1	2	100%	-
16	3		2		1	100%	-
17	5		1		4	100%	100%
18	2		2			100%	-
19	2		2			100%	-
20	4	3	1			25%	-
21	17		8	3	6	100%	-
22	3		1	1	1	100%	-
23	1				1	-	100%
24	7	1	4		2	80%	100%
25	3		3			100%	-
26	1	1				0%	-
27	36	6	9	11	10	60%	48%
28	4	2	1	1		33%	0%
29	1				1	-	100%
101	1				1	-	-
103	6		3		3	100%	100%
104	4	2		1	1	0%	-
105	15	2	9		4	82%	-
106	5		4		1	100%	100%
107	1		1			100%	-
108	4	2	1	1		33%	0%
109	1		1			100%	-
111	2		2			100%	-
112	8	1	2	1	4	67%	80%
113	5	1	2		2	67%	100%
114	1		1			100%	-
115	3		1	1	1	100%	-
116	2		2			100%	-
117	1		1			100%	-
118	5		4		1	100%	-
119	8		3		5	100%	100%
120	1		1			100%	-
121	6		2		4	100%	-
122	3		3			100%	-
123	1				1	-	100%
201	3	1	1		1	50%	-
202	38	1	16	3	18	94%	86%
203	3		3			100%	-
205	5		4		1	100%	100%
206	16		9	3	4	100%	57%
207	3	1	1		1	50%	100%
208	4		3		1	100%	100%
209	3		2		1	-	100%
210	1				1	-	100%
301	2		1	1		-	0%
302	10	4		3	3	-	-
303	14	3	6	2	3	-	60%

306	1				1	-	100%
307	4		3		1	-	-
308	4		2		2	-	-
309	4		4			-	-
310	6	2	1	1	2	-	67%
311	5		1	2	2	-	50%
312	1			1		-	0%
313	3		1		2	-	100%
315	5		3		2	-	-
316	6		4		2	-	-
317	1				1	-	-
319	4	2		2		-	-
320	4		1	1	2	-	67%
321	10		8		2	-	100%
323	2	1		1		-	-
324	7	4	2	1		-	-
325	11		7	2	2	-	-
326	5		2	1	2	-	-
327	3			2	1	-	-
328	5		4		1	-	-
329	4	1	1		2	-	-
330	6		3	2	1	-	33%
331	16		10		6	-	-
332	17		8	3	6	-	67%
334	1		1			-	-
335	6		5		1	-	100%
336	3		3			-	-
338	1		1			-	-
339	2				2	-	100%
340	2		2			-	-
341	6	1	3	1	1	-	50%
343	4		1	2	1	-	-
346	1		1			-	-
402	7	3	3		1	-	100%
403	1		1			-	-
All	586	57	287	69	173	83%	71%

Table 4i: Driver wearing rates (%) by gender and road type 2008

Gender	Urban National Primary Road	Urban National Secondary Road	Rural National Primary Road	Rural National Secondary Road	Cork Urban	Dublin Urban	Dun Laoghaire Urban	Limerick Urban	Small Urban Areas	Regional Roads	County Roads
Male	89%	84%	86%	86%	97%	96%	94%	91%	89%	88%	80%
Female	95%	90%	94%	93%	95%	95%	98%	97%	91%	95%	91%

5 Tables - Primary and Secondary School Seatbelt Wearing

Table 5a: Child seatbelt wearing survey locations

Code	School type	School
404	Primary School	Aine Naofa, Gort, Galway
405	Primary School	Brackenstown, Swords
406	Primary School	Christ the King Cabra
407	Primary School	Holy Family, Balloonagh, Tralee
408	Primary School	Illies, Ballymangan Lifford, Donegal
409	Primary School	Mountmellick Convent, Laois
410	Primary School	Naomh Padraig, Donabate
411	Primary School	Our Lady of Consolation, Collins Avenue
412	Primary School	Presentation College, Thurles
413	Primary School	Rath Eoghan, Westmeath
414	Primary School	Sciol Na Molua Ardagh, Limerick
415	Primary School	Scoil Spirit Naomh, Bishopstown
416	Primary School	St. Michaels Stradone, Cavan
417	Primary School	St. Patrick's College, Tuam
418	Secondary School	Tullow Community School
419	Secondary School	Ardee Community School
420	Secondary School	Ballymun Snr. Comp Ballymun
421	Secondary School	Belvedere College Dublin
422	Secondary School	Castlecomer Community School
423	Secondary School	Colaiste Mhuire, Cobh
424	Secondary School	Community Sch., Carrick-on-Shannon
425	Secondary School	Drumcollogher Community
426	Secondary School	Leixlip Community Celbridge Rd
427	Secondary School	Meanscoil Iognaid Ris, Longmile Road
428	Secondary School	Scoil Mhuire Greenhill Carrick-on-Suir
429	Secondary School	Scoil Mhire gan Smal, Roscommon
430	Secondary School	St. Joseph's, Rochefortbridge, Mullingar
431	Secondary School	St. Mary's Ballysadare, Sligo

Table 5b: Summary of seatbelt wearing for children by gender, 2008

Time Period	Site ref	School type	Total obs	Seat belt worn				% compliance		
				Female		Male		Female	Male	All
				No	Yes	No	Yes			
AM	All	Primary	959	96	457	76	330	83%	81%	82%
AM	All	Secondary	1410	116	666	124	504	85%	80%	83%
PM	All	Primary	848	110	383	103	252	78%	71%	75%
PM	All	Secondary	1099	136	514	112	337	79%	75%	77%
AM	All	All	2369	212	1123	200	834	84%	81%	83%
PM	All	All	1947	246	897	215	589	78%	73%	76%
All	All	Primary	1807	206	840	179	582	80%	76%	79%
All	All	Secondary	2509	252	1180	236	841	82%	78%	81%
All	All	All	4316	458	2020	415	1423	82%	77%	80%

Table 5c: Summary of seatbelt wearing for children by time period, school type, seat occupied and gender, 2008

School type	Time Period	Seat	Total obs	Seat belt worn				% Compliance		
				Female		Male		Female	Male	Both
				No	Yes	No	Yes			
Primary	AM	Front	406	21	201	22	162	91%	88%	89%
	AM	Rear	553	75	256	54	168	77%	76%	77%
	PM	Front	296	32	134	24	106	81%	82%	81%
	PM	Rear	552	78	249	79	146	76%	65%	72%
Primary	Both	Front	702	53	335	46	268	86%	85%	86%
	Both	Rear	1105	153	505	133	314	77%	70%	74%
Secondary	AM	Front	811	42	387	50	332	90%	87%	89%
	AM	Rear	599	74	279	74	172	79%	70%	75%
	PM	Front	606	54	282	35	235	84%	87%	85%
	PM	Rear	493	82	232	77	102	74%	57%	68%
Secondary	Both	Front	1417	96	669	85	567	87%	87%	87%
	Both	Rear	1092	156	511	151	274	77%	64%	72%
Both	Both	Front	2119	149	1004	131	835	87%	86%	87%
	Both	Rear	2197	309	1016	284	588	77%	67%	73%
Both	Both	Both	4316	458	2020	415	1423	82%	77%	80%

Table 5d: Seatbelt wearing for children by school attended and gender, 2008

Time Period	Site ref	School type	Total obs	Seat belt worn				% compliance	
				Female		Male		Female	Male
				No	Yes	No	Yes		
AM	404	Primary	28	0	13	4	11	100%	73%
AM	405	Primary	126	6	79	0	41	93%	100%
AM	406	Primary	60	11	37	4	8	77%	67%
AM	407	Primary	166	4	73	7	82	95%	92%
AM	408	Primary	71	2	39	4	26	95%	87%
AM	409	Primary	132	30	55	18	29	65%	62%
AM	410	Primary	28	1	17	0	10	94%	100%
AM	411	Primary	42	2	21	4	15	91%	79%
AM	412	Primary	97	23	56	7	11	71%	61%
AM	413	Primary	39	6	15	5	13	71%	72%
AM	414	Primary	50	2	16	5	27	89%	84%
AM	415	Primary	79	3	33	12	31	92%	72%
AM	416	Primary	1	1	0	0		-	-
AM	417	Primary	40	5	3	6	26	38%	81%
AM	All	Primary	959	96	457	76	330	83%	81%
AM	418	Secondary	74	4	48	3	19	92%	86%
AM	419	Secondary	85	6	48	7	24	89%	77%
AM	420	Secondary	20	0	9	0	11	100%	100%
AM	421	Secondary	65	0	3	7	55	100%	89%
AM	422	Secondary	212	31	96	19	66	76%	78%
AM	423	Secondary	219	10	107	16	86	91%	84%
AM	424	Secondary	155	6	80	9	60	93%	87%
AM	425	Secondary	108	26	23	24	35	47%	59%
AM	426	Secondary	43	3	19	3	18	86%	86%
AM	427	Secondary	58	0	7	2	49	100%	96%
AM	428	Secondary	31	3	22	4	2	88%	33%
AM	429	Secondary	187	16	143	5	23	90%	82%
AM	430	Secondary	35	0	9	11	15	100%	58%
AM	431	Secondary	118	11	52	14	41	83%	75%
AM	All	Secondary	1410	116	666	124	504	85%	80%
PM	404	Primary	23	0	15	0	8	100%	100%
PM	405	Primary	76	2	50	3	21	96%	88%
PM	406	Primary	59	11	29	7	12	73%	63%
PM	407	Primary	98	1	35	12	50	97%	81%
PM	408	Primary	66	4	41	0	21	91%	100%
PM	409	Primary	124	33	43	19	29	57%	60%
PM	410	Primary	38	1	19	2	16	95%	89%
PM	411	Primary	69	5	41	3	20	89%	87%
PM	412	Primary	74	18	49	4	3	73%	43%
PM	413	Primary	33	10	10	8	5	50%	38%
PM	414	Primary	66	10	21	10	25	68%	71%
PM	415	Primary	76	7	27	13	29	79%	69%
PM	416	Primary	0	0	0	0	0	-	-
PM	417	Primary	46	8	3	22	13	27%	37%
PM	All	Primary	848	110	383	103	252	78%	71%
PM	418	Secondary	66	10	30	5	21	75%	81%
PM	419	Secondary	80	11	39	3	27	78%	90%
PM	420	Secondary	15	0	8	0	7	100%	100%
PM	421	Secondary	16	0	0	2	14	-	88%
PM	422	Secondary	56	9	27	3	17	75%	85%
PM	423	Secondary	193	18	99	10	66	85%	87%
PM	424	Secondary	127	13	55	14	45	81%	76%

PM	425	Secondary	85	20	16	25	24	44%	49%
PM	426	Secondary	39	0	18	6	15	100%	71%
PM	427	Secondary	38	0	6	0	32	100%	100%
PM	428	Secondary	55	12	43	0	0	78%	-
PM	429	Secondary	140	14	98	8	20	88%	71%
PM	430	Secondary	76	21	20	19	16	49%	46%
PM	431	Secondary	113	8	55	17	33	87%	66%
PM	All	Secondary	1099	136	514	112	337	79%	75%

Appendix 2

Surveyor Instructions

Seat Belt Sites - non school sites

The survey is to be carried out during working hours, Monday- Friday (9.30-17.30) and on 11 separate road classes:

Eligible vehicles:

- Cars
- Light goods vehicles

Task

As an observer, you have the responsibility to watch each eligible vehicle as it slows down or stops at an intersection and record information about the vehicle and its occupants. Record on the survey forms provided.

Driver's gender

Whether or not he or she is wearing a seat belt

If there is a passenger in the vehicle, record under appropriate seat type occupied by the passenger (front or rear)

Passenger's gender

Whether or not he or she is wearing a seat belt

The duration of the survey is 2.5 hours or until such time as the sample quota is achieved whichever is the least

Members of An Garda Síochána, driving instructors, taxi drivers and children are excluded from the front and rear adult seat belt surveys. Surveyors are instructed to continue the survey until the target sample coverage was exceeded.

School seatbelt wearing survey

The survey is to be carried out during mornings and evenings (as children are getting dropped in or taken away from school)

Task

Recording methodologies are the same as for the adult seatbelt survey and surveyors are asked to select sites in excess of 100 metres away from each of the schools (so that people haven't taken seat belts off before jumping out of car)

Working To Save Lives

Údarás Um Shábháilteacht Ar Bhóithre Road Safety Authority

Páirc Ghnó Ghleann na Muaidhe, Cnoc an tSabhaircín, Bóthar Bhaile Átha Cliath, Béal an Átha, Co. Mhaigh Eo
Moy Valley Business Park, Primrose Hill, Dublin Road, Ballina, Co. Mayo
local: 1890 50 60 80 fax: (096) 25 000 email: info@rsa.ie website: www.rsa.ie