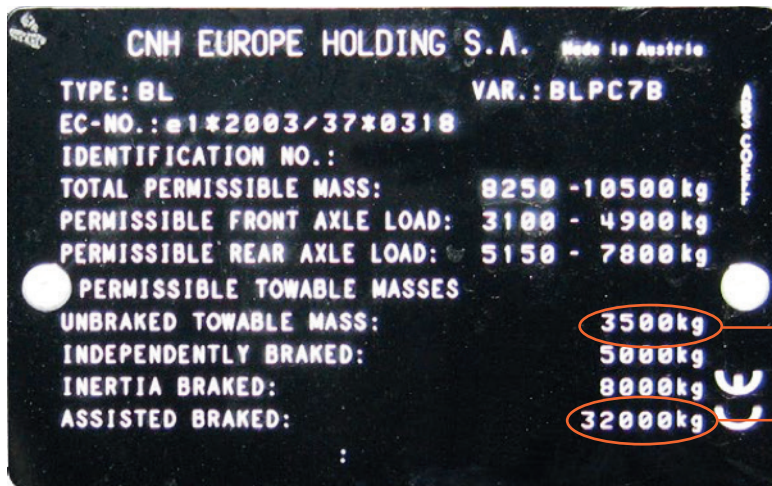


Agricultural Tractors and Trailers Towing Rules

RSA

What can my tractor tow?

Check its manufacturer's plate as follows:



If trailer is not fitted with brakes - tractor can tow a max weight of **3,500kg**

If trailer fitted with an assisted braking system (i.e. hydraulic or pneumatic) - Tractor can tow a max weight of **32,000kg**

Image of a manufacturer's plate fitted to an agricultural tractor

What can my trailer carry?

Find out your trailer's unladen (empty) weight and subtract this figure from its max permitted weight, as shown on its authorisation plate, as follows:

Name of Manufacturer	XXXXXXXXXXXXXXXXXX	
Type Approval Number (If applicable)	XXXXXXXXXXXXXXXXXX	
Vehicle Identification Number	XXXXXXXXXXXXXXXXXX	
Maximum Design Speed (Kilometers per Hour)	40 Km/h	
Tyre Size	445/65/22.5	
Load Speed Index	166 D	
Single or Twin (S/T)	Single (S)	
Inflation Pressure for Weights Specified in Column (1)	130 P. S. I	
	(1) Weight Not to be Exceeded in Ireland [kg]	(2) Design Weights (If higher than permitted in Ireland) [kg]
Maximum Permitted Laden Weight (Including Drawbar)	19,000 kg	
Foremost Axle	8,000 kg	
Axle 2 Weight	8,000 kg	
Axle 3 Weight	- kg	
Axle 4 Weight	- kg	
Maximum Drawbar Loading	3,000 kg	
Vehicle Length (Including Drawbar)	8,500 mm	
Vehicle Width	2,500 mm	

Load calculator

19,000Kg (Max Weight) - Empty Weight = Load it can carry

For Example;

Max Weight of trailer 19,000Kg

Empty weight of trailer 5,000Kg (subtract)

Load it can carry **14,000Kg**

If you are unsure as to which limits apply to your vehicle or vehicles, please consult with the vehicle manufacturer or one of their authorised distributors

Frequently Asked Questions



Where is the manufacturer's plate located on my tractor? Usually located in the cab of the tractor under the driver's seat or just over the brake pedal, however this may vary depending on the manufacturer.

Where is the authorisation plate located on my trailer? On the side of the drawbar near the front of trailer.

Where can I weigh my trailer? Bring it to your local weigh bridge. Please contact your local authority for details.

What are the laws on plating agricultural tractors? By law, all agricultural tractors first registered on or after 1 January 2016 must have a manufacturer's plate fitted.

What are the laws on plating agricultural trailers? All trailers manufactured on or after 1 January 2016 must have an authorisation plate fitted.

Do tractors/trailers manufactured (first registered) before 1 Jan 2016 need to be plated also? Agricultural tractors and trailers manufactured/first registered before 1 January 2016 will only need to be plated if:

- a) The agricultural tractor has a max design speed of more than 40km/h or is being used to draw a tandem or tri-axle rigid drawbar trailer with a laden weight over 19 tonnes for tandems and 22.5 tonnes for tri-axes.
- b) The agricultural trailer is capable by design of being drawn at speeds over 40km/h or is operating at laden weights exceeding 19 tonnes for tandems and 22.5 tonnes for tri-axes.

Who can fit a plate to my tractor/trailer? The fitting of plates to either tractors or trailers must only be carried out by the original manufacturer or one of their authorised distributors. In the case of trailers, if the original manufacturer is unknown or no longer in business, it can be carried out by another recognised trailer manufacturer.

My tractor has no manufacturer's plate (or not the proper manufacturer's plate). What can I tow legally?

By not having a manufacturer's plate fitted on your tractor, you are limited to towing a trailer with a DGVW of not more than three times the tractor's unladen weight (as specified by the manufacturer). Alternatively, you can contact the tractor manufacturer/authorised distributor to have a manufacturer's plate fitted. You must always adhere to the lower weights declared on the manufacturer's plate fixed to the tractor, or the weights declared on the authorisation plate fixed to the trailer.

My tractor is fitted with a manufacturer's plate and my trailer is fitted with an authorisation plate. Which weight applies in this case? You must adhere to the lesser of the two weights.

I have no means of weighing my trailers when they are laden. What can I do to ensure that I comply with the weight limits? Find out the unladen weight of your trailer (from manufacturer/distributor or have it weighed) and its volumetric carrying capacity. Multiply the volumetric carrying capacity by the density of the crop being carried. (Your local agricultural adviser should be able to help you with various crop densities.) Add the figure you get from this calculation to the figure for the trailer's unladen weight. This will give you an estimate of the laden weight of the trailer in kgs. For example, a 20ft (6.096 metre) tandem axle grain trailer with a volumetric capacity of 23 cubic metres (m³) and an unladen weight of 5,200kg would weigh 22,450kg when level-loaded with wheat:

Unladen weight + (carrying capacity x crop density) = loaded weight.
5,200 + (23 x 750) = 22,450kg.

How do I work out the volumetric carrying capacity? Multiply the length by the width by the height of the goods-carrying area of the trailer. Measure these distances in metres. This will give you a figure which is the volumetric carrying capacity of your trailer expressed in cubic metres.