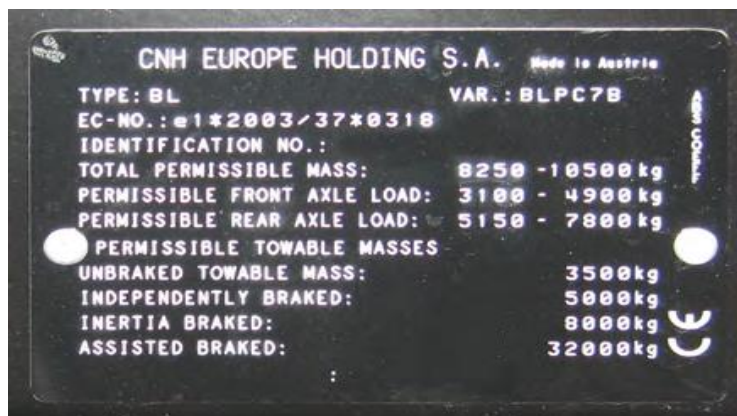


## FAQs on Plating Agricultural Vehicles

**What is a manufacturer's plate?** A manufacturer's plate (also known as a statutory plate) is a plate attached to an agricultural vehicle (e.g. tractor) that contains the technical information needed to identify the vehicle and gives the information about the maximum loaded weights allowed. Such information includes; manufacturer's name, VIN No., Design Gross Vehicle Weight/Total permissible Weight, permissible axle loads and towable masses.

**What is an authorisation plate?** An authorisation plate (also known as a National Weights and Dimensions Plate) is a plate attached to an agricultural trailer that contains the following information: manufacturer's name, VIN No., maximum design speed, permitted laden weight, maximum drawbar loading, vehicle length and width.



Example of manufacturer's plate (used on a tractor)

Name of Manufacturer		
Type Approval Number (if applicable)		
Vehicle Identification Number		
Maximum Design Speed (Kilometers per Hour)		
Tyre Size		
Load Speed Index		
Single or Twin (S/T)		
Inflation Pressure for Weights Specified in Column (1)		
	(1) Weight Not to be Exceeded in Ireland (kg)	(2) Design Weights (if higher than permitted in Ireland) (kg)
Maximum Permitted Laden Weight (Including Drawbar)	kg	kg
Foremost Axle	kg	kg
Axle 2 Weight	kg	kg
Axle 3 Weight	kg	kg
Axle 4 Weight	kg	kg
Maximum Drawbar Loading	kg	kg
Vehicle Length (Including Drawbar)		mm
Vehicle Width		mm

Example of an authorisation plate (used on a trailer)

**What are the laws on plating agricultural vehicles?** By law, all agricultural tractors first registered on or after 1 January 2016 must have a manufacturer's plate fitted. Additionally, all trailers manufactured on or after 1 January 2016 must have an authorisation plate fitted.

**What about tractors or trailers manufactured/first registered before 1 January 2016? Do these need to be plated also?** Agricultural tractors and trailers manufactured/first registered *before* 1 January 2016 will only need to be plated if:

- The agricultural tractor has a max design speed of more than 40km/h or is being used to draw a tandem or tri-axle rigid drawbar trailer with a laden weight over 19 tonnes for tandems and 22.5 tonnes for tri-axes.
- The agricultural trailer is capable by design of being drawn at speeds over 40km/h or is operating at laden weights exceeding 19 tonnes for tandems and 22.5 tonnes for tri-axes.

**Who can fit a plate to my tractor/trailer?** The fitting of plates to either tractors or trailers must only be carried out by the original manufacturer or one of their authorised distributors.

**What if the original manufacturer is unknown or no longer in business?** The fitting of plates to trailers where the manufacturer is of no known origin or no longer in business can be carried out by another recognised trailer manufacturer.

**My tractor has no manufacturer's plate so I don't know what age it is. What happens then?** If the manufacturer is no longer in business and the authorised distributor is unable to determine age of tractor, the driver will be limited to towing a trailer whose DGVW<sup>1</sup> is not more than three times the unloaded weight of the tractor.

<sup>1</sup> The Design Gross Vehicle Weight (DGVW) of a vehicle is its gross weight laden with the heaviest load it can carry according to the design specifications

**Do vintage tractors/trailers need to be plated?** Most vintage tractors would not be capable by design of exceeding 40km/h however if they can or are being used to draw a tandem or tri-axle rigid drawbar trailer with a laden weight over 19 tonnes for tandems and 22.5 tonnes for tri-axes, then they would need to be plated.

**Does other towed equipment (e.g. slurry tankers, manure or fertiliser spreaders, grain chaser bins etc.) need to be plated?** No. However operators of this type of equipment must adhere to the equipment manufacturer's specifications provided that the equipment (when laden) is not heavier than the manufacturer's rated towing capacity of their tractor.

**If I use my agricultural tractor to pull a trailer for a purpose other than agriculture, fisheries, forestry or horticulture. What rules must I adhere to?** In this case your tractor/trailer combination is considered to be used in a commercial capacity and therefore all of the rules that apply to commercial vehicles will apply here. The trailer must also meet the plating requirements for commercial vehicles which are set out on page 20 of the [CVRT manual](#). For more information on commercial vehicles please visit [www.cvrt.ie](http://www.cvrt.ie) or email [cvrtadmin@rsa.ie](mailto:cvrtadmin@rsa.ie).

**I have modified my tractor/trailer so the information displayed on its manufacturer's/authorisation plate is no longer accurate. Can I use this vehicle in a public place?** No. The only time you can use it in public is when you are bringing it to have a new plate fitted. Even then, you must not carry a load and you must have an appointment date.

*This document is for general information only. It does not, and is not intended to, provide legal or technical advice or to represent a legal interpretation of the matters that it addresses.*