

RSA



# Child Casualties Report

## 1997 – 2006

Údarás Um Shábháilteacht Ar Bhóithre  
Road Safety Authority

# Child (0-14 Years Old) Road Casualties 1997 – 2006

## Overview

Over the ten year period, 1997-2006, 198 children (0-14 years old) have been killed on our roads. An additional 855 children were seriously injured.

43 per cent of child casualties killed in the period 1997 to 2006 were pedestrians. Of all child casualties who were seriously or slightly injured in the period 1997 to 2006, 54 per cent were car passengers. 59 per cent of children killed were male.

Peak time for children to be killed on the road is during the hours of 3:00 p.m. – 7:59 p.m. Children are more likely to be killed during the summer months, with June and July having the most fatalities.

The child fatality rate per million population has decreased by 40.6 per cent from 1997 to 2006.

**Other Key Facts:** Since 1997 there has been

- 40.7% reduction in the number of children 14 years of age or younger killed on our roads compared to 2006.
- 51.5% reduction in the number of children 14 years of age or younger injured on our roads compared to 2006.

Broken down by road user category there has been;

- 45.5% decrease in pedestrian fatalities
- 100% decrease in cyclist fatalities
- 18.2% decrease in car passenger fatalities

## CASUALTIES

**Table 1: CHILD (0-14 YEARS OLD) ROAD FATALITIES BY AGE & GENDER**

	1997	1998	1999	2000	2001	2002	2003	2004	2005	2006	Total
Male 0-4	4	5	3	3	6	3	4	1	3	5	37
Female 0-4	2	3	4	3	3	4	3	1	0	3	26
Male 5-9	4	6	5	4	4	3	3	1	1	3	34
Female 5-9	5	4	3	4	2	1	2	1	0	2	24
Male 10-14	7	12	6	3	5	3	2	1	4	1	44
Female 10-14	5	3	2	5	6	4	2	2	1	2	32
Gender unknown	0	1	0	0	0	0	0	0	0	0	1
<b>Total</b>	<b>27</b>	<b>34</b>	<b>23</b>	<b>22</b>	<b>26</b>	<b>18</b>	<b>16</b>	<b>7</b>	<b>9</b>	<b>16</b>	<b>198</b>

Figure 1

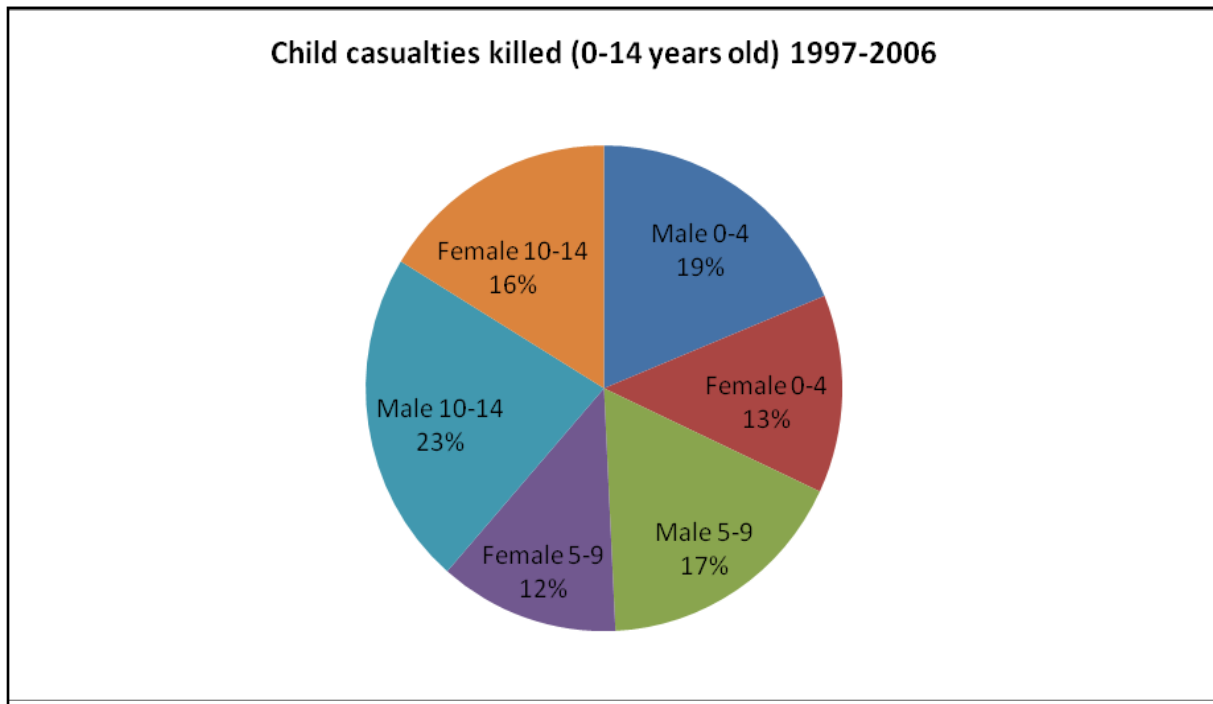


Figure 2

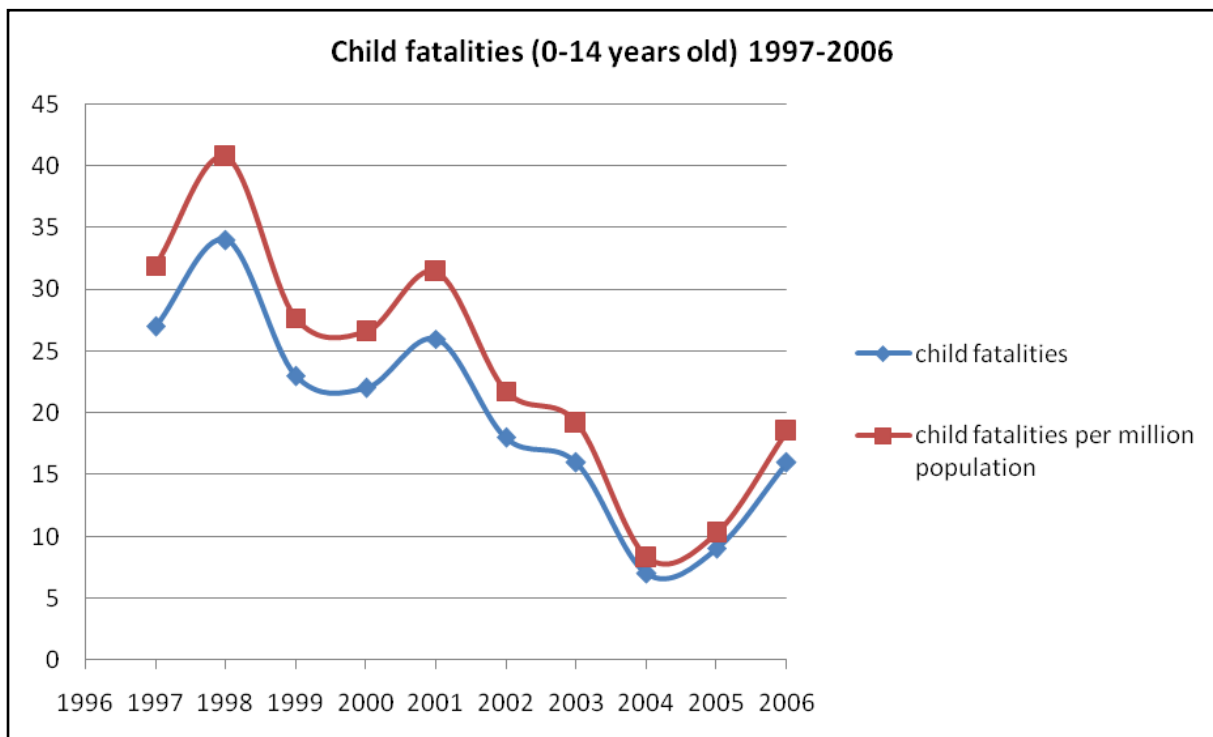


Table 2: CHILD (0-14 YEARS OLD) ROAD FATALITIES &amp; SERIOUS INJURIES BY AGE &amp; GENDER

	1997	1998	1999	2000	2001	2002	2003	2004	2005	2006	Total
<b>Male 0-4</b>	17	18	12	14	20	20	9	7	9	12	138
<b>Female 0-4</b>	15	13	14	9	7	6	6	2	9	10	91
<b>Male 5-9</b>	25	34	27	17	27	12	17	8	12	15	194
<b>Female 5-9</b>	21	26	17	15	11	10	8	11	12	9	140
<b>Male 10-14</b>	53	36	35	24	29	14	17	17	24	13	262
<b>Female 10-14</b>	27	27	27	28	24	14	14	17	9	8	195
<b>Gender Unknown</b>	4	5	5	4	1	4	3	1	3	3	4
<b>Total</b>	162	159	137	111	119	80	74	63	78	70	1053

Table 3: Child (0-14 years old) Road Users Killed &amp; Injured, 1997 - 2006

SEVERITY	Pedestrians	Pedal-cyclists	Car Passengers	Other Road Users	Total
<b>Killed</b>	86	27	70	15	198
<b>Injured</b>	2535	623	4219	472	7849
<b>Total</b>	2621	650	4289	487	8047

Note: Injured refers to seriously or slightly injured

- Pedestrian Casualties = 32.6%
- Pedal Cyclist Casualties = 8.1%
- Car Passenger Casualties = 53.3%
- Other Road User Casualties = 6.0%

Table 4: Child (0-14 years old) Road Users Killed 1997 – 2006

YEAR	Pedestrians	Pedal-cyclists	Car Passengers	Total
2006	6	0	9	15
2005	8	0	1	9
2004	2	0	4	6
2003	7	3	6	16
2002	8	3	5	16
2001	11	2	11	24
2000	8	3	8	19
1999	10	3	6	19
1998	15	8	9	32
1997	11	5	11	27
<b>Total</b>	<b>86</b>	<b>27</b>	<b>70</b>	<b>183</b>

Note: Other Road Users Not Included

- Pedestrian Fatalities = 43%
- Pedal Cyclist Fatalities = 14%
- Car Passenger Fatalities = 35%
- Other Road User Fatalities = 8%

Figure 3

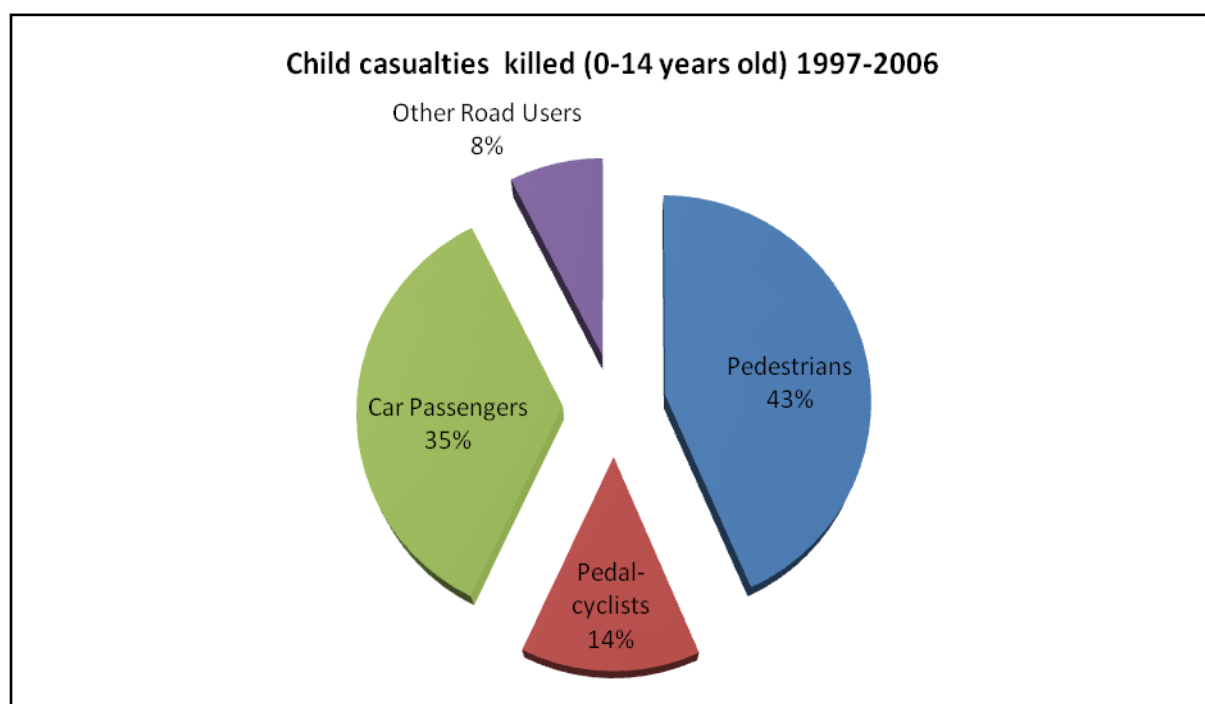


Table 5: Child (0-14 years old) Road Users Injured 1997 - 2006

Year	Pedestrians	Pedal-cyclists	Car Passengers	Total
2006	205	25	302	532
2005	215	27	307	549
2004	211	62	233	506
2003	244	42	276	562
2002	250	54	278	582
2001	221	54	425	700
2000	232	70	573	875
1999	273	72	625	970
1998	310	91	587	988
1997	374	126	613	1113
<b>Total</b>	<b>2535</b>	<b>623</b>	<b>4219</b>	<b>7377</b>

Note: Injured refers to seriously or slightly injured

- Pedestrian Injuries = 32%
- Pedal Cyclist Injuries = 8%
- Car Passenger Injuries = 54%
- Other Road User Injuries = 6%

Figure 4

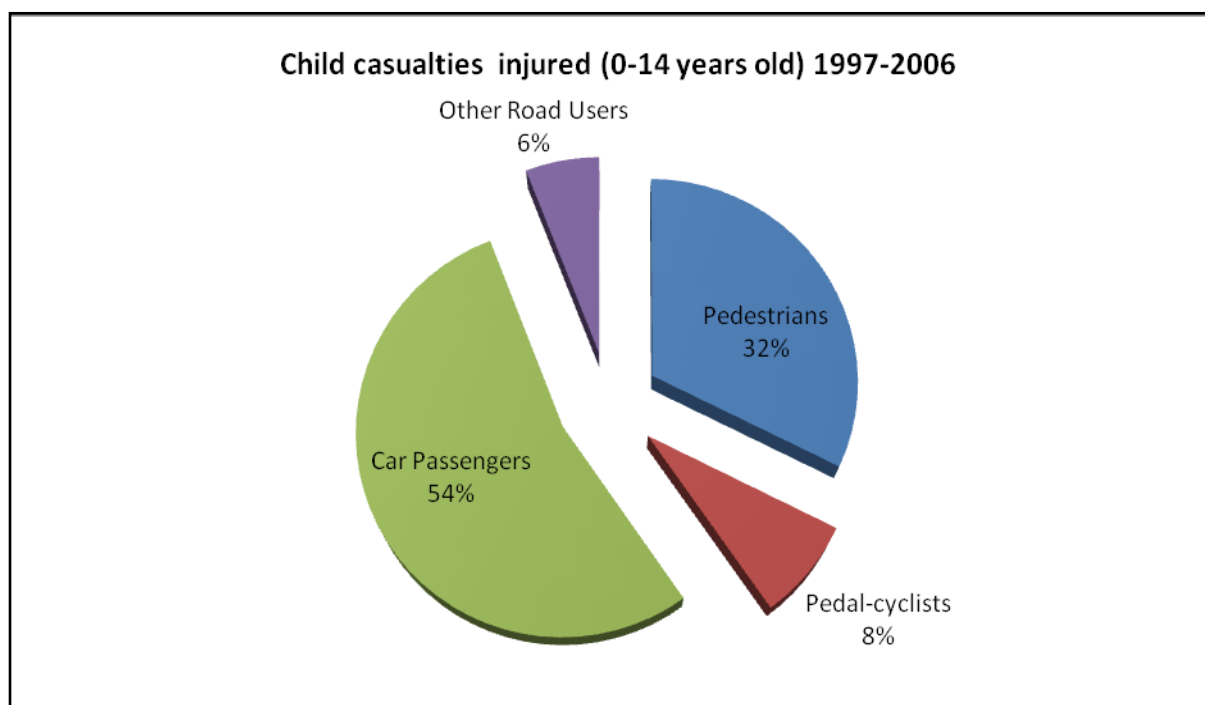


Figure 5

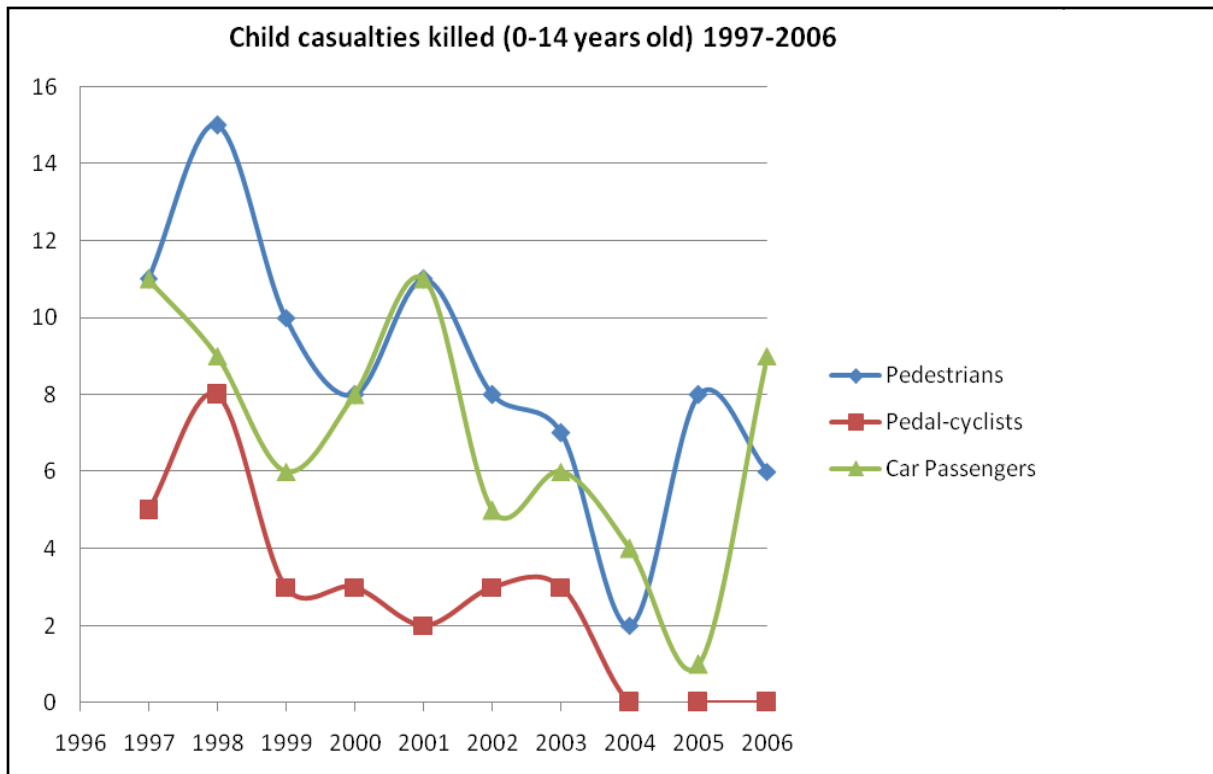
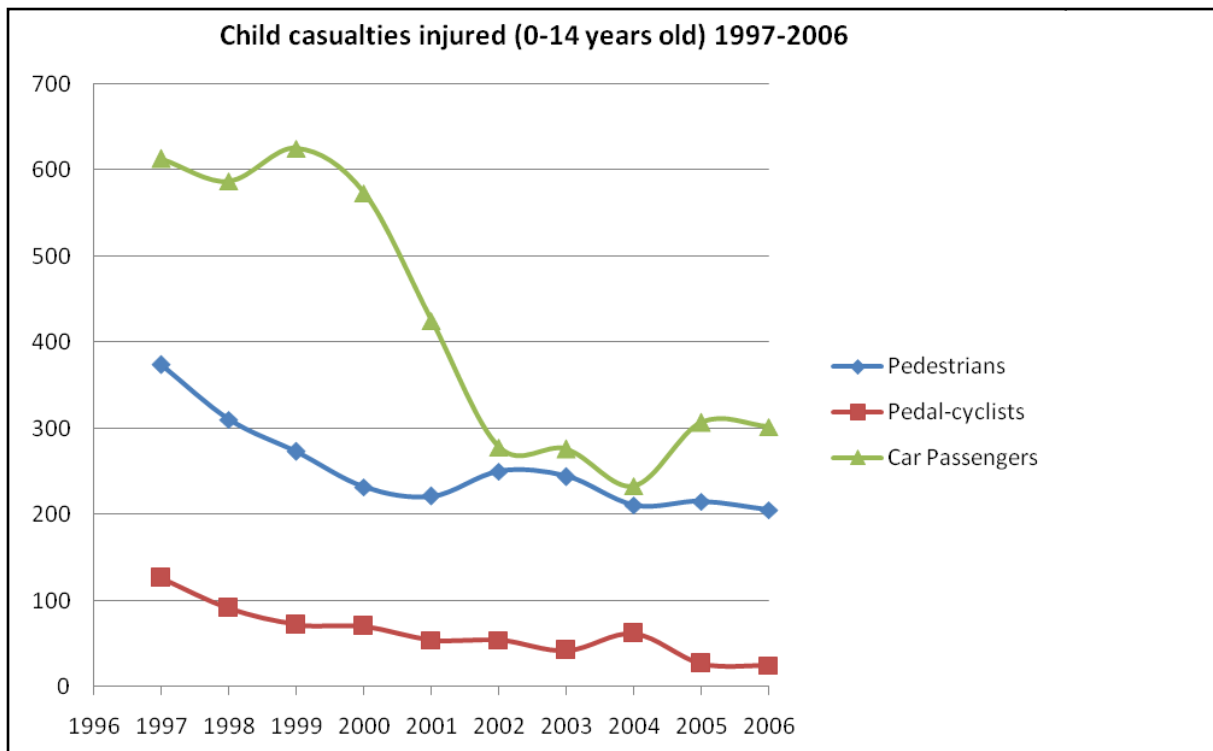


Figure 6



# WHEN CHILDREN (0-14 YEARS OLD) ARE KILLED

In the period 1997-2006, there were 198 child fatalities, of which 116 (59%) occurred during the hours of 3:00 p.m. – 7:59 p.m. 48 per cent of children were killed or seriously injured on Friday, Saturday and Sunday. Just under half were killed during the months of May through September, with June and July having the most fatalities.

**Table 6: Children (0-14 years old) Killed By Hour of the Day, 1997-2006**

Hour	1997	1998	1999	2000	2001	2002	2003	2004	2005	2006	Total	%
Midnight	0	0	2	1	0	0	0	0	0	0	3	2
1	0	0	0	0	0	0	0	0	0	0	0	0
2	0	0	0	0	0	0	0	0	0	0	0	0
3	1	0	0	0	0	0	0	0	0	0	1	1
4	0	0	0	0	0	0	0	0	0	0	0	0
5	0	0	0	0	0	0	0	1	0	0	1	1
6	0	0	0	0	0	0	0	0	0	0	0	0
7	0	0	0	0	0	1	0	0	0	0	1	1
8	0	2	0	1	1	0	0	1	1	1	7	4
9	0	0	0	0	0	0	0	0	0	0	0	0
10	3	1	0	2	0	0	2	0	0	0	8	4
11	2	0	1	3	1	1	0	0	0	0	8	4
12	0	3	1	3	1	0	3	0	0	0	11	6
13	1	0	3	0	5	0	1	0	1	2	13	7
14	1	2	2	2	4	2	0	1	0	4	18	9
15	2	5	0	2	4	2	1	0	1	0	17	9
16	5	4	3	3	5	4	2	0	3	2	31	16
17	5	2	3	1	2	1	3	2	1	1	21	11
18	4	4	4	0	0	2	0	0	0	2	16	8
19	1	4	2	0	0	2	2	1	1	1	14	7
20	1	5	2	3	2	2	1	0	0	1	17	9
21	0	2	0	1	1	1	1	0	0	2	8	4
22	1	0	0	0	0	0	0	1	1	0	3	2
23	0	0	0	0	0	0	0	0	0	0	0	0
Unknown	0	0	0	0	0	0	0	0	0	0	0	0
<b>Total</b>	27	34	23	22	26	18	16	7	9	16	198	100



Table 7: Children (0-14 years old) killed &amp; seriously injured by hour of the day, 1997-2006

Hour	1997	1998	1999	2000	2001	2002	2003	2004	2005	2006	Total	%
Midnight	0	0	2	1	0	2	2	4	3	1	15	1
1	1	1	0	0	0	0	0	1	0	0	3	0
2	0	0	0	2	3	0	0	0	1	1	7	1
3	2	0	0	0	0	0	0	0	0	0	2	0
4	0	0	0	0	0	1	0	1	0	0	2	0
5	1	1	0	1	0	0	0	2	0	0	5	0
6	0	0	0	0	0	2	2	0	0	0	4	0
7	0	0	2	0	0	1	0	2	0	0	5	0
8	2	9	3	3	2	1	3	2	3	2	30	3
9	1	1	7	4	5	1	2	1	0	2	24	2
10	6	4	4	2	3	0	3	0	0	2	24	2
11	11	2	5	6	9	4	0	0	4	3	44	4
12	13	8	8	9	4	3	7	2	3	1	58	6
13	7	4	7	8	7	5	6	3	10	6	63	6
14	9	13	17	9	11	3	1	6	4	13	86	8
15	10	13	8	12	13	7	6	8	8	6	91	9
16	27	20	14	12	12	13	8	3	10	8	127	12
17	19	18	12	10	13	11	11	4	7	6	111	11
18	20	22	14	9	17	7	9	9	9	8	124	12
19	13	14	13	5	2	10	3	3	6	3	72	7
20	9	21	7	14	12	5	6	6	3	4	87	8
21	5	3	3	2	3	3	4	0	2	3	28	3
22	4	3	8	1	0	1	0	2	4	0	23	2
23	1	2	3	1	3	0	1	1	1	1	14	1
Unknown	1	0	0	0	0	0	0	3	0	0	4	0
<b>Total</b>	162	159	137	111	119	80	74	63	78	70	1053	100

Table 8: Children (0-14 years old) killed by day of the week, 1997-2006

Day of the Week	1997	1998	1999	2000	2001	2002	2003	2004	2005	2006	Total	%
Sunday	28	25	13	10	10	14	9	13	17	12	151	14
Monday	20	21	21	22	20	4	7	5	5	10	135	13
Tuesday	17	20	22	13	21	15	5	12	4	9	138	13
Wednesday	22	22	18	15	12	12	18	7	13	10	149	14
Thursday	19	19	18	10	17	9	8	9	11	9	129	12
Friday	26	29	19	20	19	15	10	7	12	7	164	16
Saturday	30	23	26	21	20	11	17	10	16	13	187	18
Total	162	159	137	111	119	80	74	63	78	70	1053	100

Table 9: Children (0-14 years old) killed &amp; seriously injured by day of the week, 1997-2006

Day of the week	1997	1998	1999	2000	2001	2002	2003	2004	2005	2006	Total	%
Sunday	28	25	13	10	10	14	9	13	17	12	151	14
Monday	20	21	21	22	20	4	7	5	5	10	135	13
Tuesday	17	20	22	13	21	15	5	12	4	9	138	13
Wednesd	22	22	18	15	12	12	18	7	13	10	149	14
Thursday	19	19	18	10	17	9	8	9	11	9	129	12
Friday	26	29	19	20	19	15	10	7	12	7	164	16
Saturday	30	23	26	21	20	11	17	10	16	13	187	18
Total	162	159	137	111	119	80	74	63	78	70	1053	100

Table 10: Children (0-14 years old) killed by month of the year, 1997-2006

Month	1997	1998	1999	2000	2001	2002	2003	2004	2005	2006	Total	%
January	0	2	3	1	1	2	0	1	0	1	11	6
February	3	2	2	2	2	3	0	1	1	1	17	9
March	3	1	4	1	2	1	2	1	1	1	17	9
April	1	5	3	4	2	1	1	1	1	1	20	10
May	3	4	1	2	3	1	3	0	1	0	18	9
June	4	2	3	2	1	3	1	2	2	1	21	11
July	0	7	2	1	5	0	2	0	0	5	22	11
August	5	1	0	4	3	2	4	1	0	0	20	10
September	2	5	3	1	4	1	0	0	0	1	17	9
October	2	1	1	2	2	2	3	0	0	4	17	9
November	4	1	1	1	1	2	0	0	2	1	13	7
December	0	3	0	1	0	0	0	0	1	0	5	3
<b>Total</b>	27	34	23	22	26	18	16	7	9	16	198	100

Table 11: Children (0-14 years old) killed &amp; seriously injured by month of the year, 1997-2006

Month	1997	1998	1999	2000	2001	2002	2003	2004	2005	2006	Total	%
January	6	7	15	7	19	7	7	4	5	6	83	8
February	15	15	9	16	4	10	3	7	5	2	86	8
March	14	7	13	10	5	10	6	6	6	4	81	8
April	12	24	13	10	9	11	3	7	7	6	102	10
May	15	16	11	6	10	4	7	6	4	3	82	8
June	15	13	10	8	9	14	6	12	7	8	102	10
July	18	19	15	5	16	3	7	4	8	10	105	10
August	23	11	18	17	13	9	7	7	13	6	124	12
September	8	10	6	8	13	3	6	3	7	6	70	7
October	22	10	11	7	11	5	12	4	3	10	95	9
November	10	13	4	9	6	2	8	2	8	6	68	6
December	4	14	12	8	4	2	2	1	5	3	55	5
<b>Total</b>	162	159	137	111	119	80	74	63	78	70	1053	100

## WHERE CHILDREN WERE KILLED AND SERIOUSLY INJURED

In the period 1997-2006, 61 per cent of child fatalities occurred outside a built up area (i.e. on roads with posted speed limit more than 60km/h). 57 per cent of all children (0-14 years old) injured were inside built up areas. 44 per cent of all child (0-14 years old) fatalities occurred in county Dublin, Cork, Galway, Kildare and Wexford. Broken down by percentages of the five counties having the highest number of child fatalities in the last ten years are:

- Dublin with 15 per cent of the total number of children killed and 19 per cent of killed and seriously injured in the last ten years
- Cork with 11 per cent of the total number of children killed and 12 per cent of killed and seriously injured in the last ten years
- Galway with 6 per cent of the total number of children killed and 5 per cent of killed and seriously injured in the last ten years
- Kildare with 6 per cent of the total number of children killed and 4 per cent of killed and seriously injured in the last ten years
- Wexford with 6 per cent of the total number of children killed and 6 per cent of killed and seriously injured in the last ten years

**Table 12: Child (0-14 years old) Road Users Killed & Injured in Inside and Outside Built up Areas in 1997-2006**

Year	inside built-up areas		outside built-up areas	
	killed	injured	killed	injured
2006	6	336	10	237
2005	3	316	6	284
2004	2	334	5	202
2003	5	367	11	235
2002	8	398	10	217
2001	8	420	18	332
2000	9	477	13	435
1999	9	550	14	476
1998	16	579	18	468
1997	12	696	15	486
<b>Total</b>	<b>78</b>	<b>4473</b>	<b>120</b>	<b>3372</b>

**Note: Collision omitted when speed limit is unknown**

Figure 7

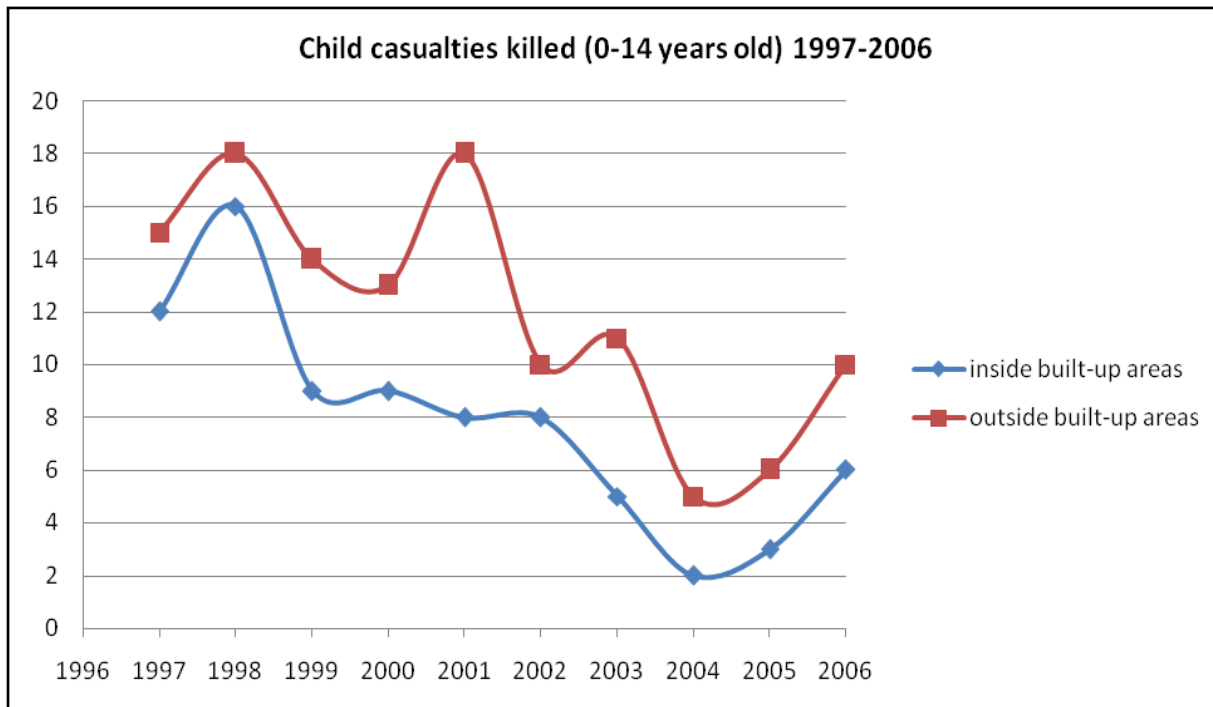


Figure 8

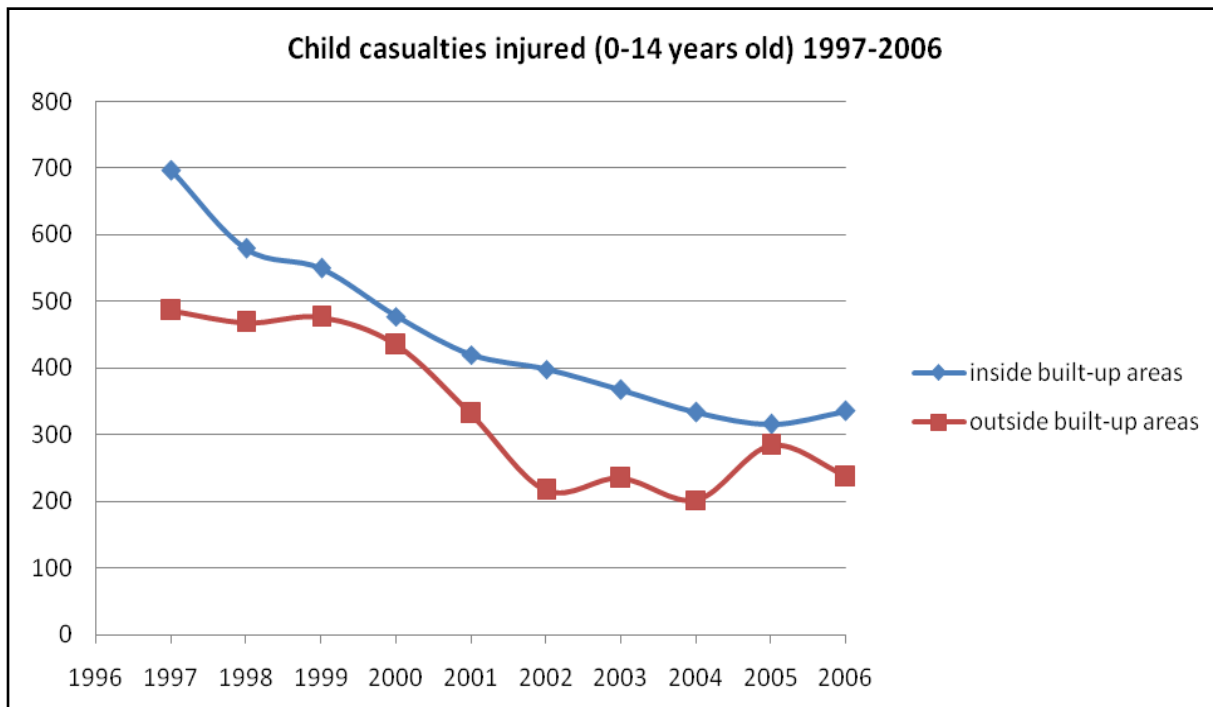


Table 13: Children (0-14 years old) killed by county, 1997-2006

County	1997	1998	1999	2000	2001	2002	2003	2004	2005	2006	Total	%
<b>Leinster</b>												
Carlow	0	1	0	0	0	1	1	0	1	0	4	2
Dublin	4	7	3	5	4	0	1	2	2	2	30	15
Kildare	1	3	1	0	2	2	1	0	0	1	11	6
Kilkenny	0	0	0	0	0	1	0	1	0	1	3	2
Laois	4	1	0	1	1	0	0	0	0	0	7	4
Longford	0	0	0	0	0	0	1	0	1	1	3	2
Louth	1	1	0	2	1	1	0	0	0	0	6	3
Meath	3	0	2	0	3	1	0	0	0	1	10	5
Offaly	1	1	1	1	0	0	0	0	0	0	4	2
Westmeath	1	0	0	2	0	0	1	0	0	0	4	2
Wexford	0	1	2	0	3	0	3	0	0	2	11	6
Wicklow	0	3	0	2	1	0	1	0	0	1	8	4
<b>Munster</b>												
Clare	1	1	0	0	0	1	2	0	0	0	5	3
Cork	4	3	5	2	1	2	0	1	1	3	22	11
Kerry	0	0	1	1	0	1	1	0	1	1	6	3
Limerick	1	1	0	1	2	1	0	0	1	0	7	4
Tipperary	1	2	0	1	1	2	0	0	1	1	9	5
Waterford	0	0	1	0	0	1	0	0	0	0	2	1
<b>Connacht</b>												
Galway	2	2	2	1	1	0	2	0	0	2	12	6
Leitrim	0	0	0	0	0	0	0	0	0	0	0	0
Mayo	0	2	1	0	0	1	1	0	0	0	5	3
Roscommon	0	1	0	0	0	0	1	1	0	0	3	2
Sligo	1	1	0	0	0	0	0	1	1	0	4	2
<b>Ulster (part of)</b>												
Cavan	0	0	1	0	0	2	0	0	0	0	3	2
Donegal	2	2	2	0	1	1	0	1	0	0	9	5
Monaghan	0	1	1	3	5	0	0	0	0	0	10	5
<b>TOTAL</b>	27	34	23	22	26	18	16	7	9	16	198	100

Table 14: Children (0-14 years old) killed &amp; seriously injured by county, 1997-2006

County	1997	1998	1999	2000	2001	2002	2003	2004	2005	2006	Total	%
<b>Leinster</b>												
Carlow	0	1	1	1	0	2	1	0	2	0	8	1
Dublin	36	36	18	21	22	20	12	13	11	9	198	19
Kildare	8	10	2	2	9	2	3	3	2	3	44	4
Kilkenny	2	1	1	3	1	2	0	1	1	1	13	1
Laois	6	3	3	1	6	3	0	3	2	2	29	3
Longford	6	0	0	2	1	1	1	0	1	1	13	1
Louth	2	9	1	4	2	3	4	0	3	2	30	3
Meath	9	5	7	4	5	4	1	3	1	4	43	4
Offaly	8	4	2	1	2	2	2	1	0	3	25	2
Westmeath	3	1	2	3	2	1	2	1	1	1	17	2
Wexford	6	4	18	2	6	2	6	3	7	6	60	6
Wicklow	5	11	3	4	1	2	4	3	2	3	38	4
<b>Munster</b>												
Clare	2	1	0	3	1	1	3	3	1	0	15	1
Cork	18	18	16	18	10	8	2	10	12	10	122	12
Kerry	7	6	10	5	4	2	3	0	7	4	48	5
Limerick	5	4	1	5	11	2	0	1	1	3	33	3
Tipperary	4	9	2	5	5	4	1	0	6	4	40	4
Waterford	3	6	8	5	1	4	2	1	0	4	34	3
<b>Connacht</b>												
Galway	9	7	7	6	6	1	8	3	2	3	52	5
Leitrim	0	0	1	1	2	0	0	2	1	1	8	1
Mayo	8	9	4	2	2	5	5	0	3	1	39	4
Roscommon	1	4	5	4	3	0	2	2	0	0	21	2
Sligo	2	2	3	2	1	2	3	2	5	1	23	2
<b>Ulster (part of)</b>											0	0
Cavan	2	2	1	3	0	2	4	1	4	0	19	2
Donegal	9	4	13	1	11	5	2	6	2	2	55	5
Monaghan	1	2	8	3	5	0	3	1	1	2	26	2
<b>TOTAL</b>	162	159	137	111	119	80	74	63	78	70	1053	100

Table 15: Children (0-14 years old) seriously or slightly injured by county, 1997-2006

County	1997	1998	1999	2000	2001	2002	2003	2004	2005	2006	Total	%
<b>Leinster</b>												
Carlow	11	12	15	13	10	3	5	4	6	4	83	1
Dublin	378	279	267	233	186	160	144	132	114	129	2022	26
Kildare	40	36	28	40	35	27	17	20	14	14	271	3
Kilkenny	14	30	19	9	17	11	10	10	13	6	139	2
Laois	11	16	25	9	17	17	3	18	9	7	132	2
Longford	22	8	12	16	10	13	8	7	5	9	110	1
Louth	29	41	35	49	19	32	32	30	29	25	321	4
Meath	37	50	33	30	23	19	18	17	19	24	270	3
Offaly	24	14	10	11	10	10	11	4	15	15	124	2
Westmeath	19	24	19	17	21	12	12	7	17	7	155	2
Wexford	41	31	40	26	24	27	32	30	31	38	320	4
Wicklow	61	42	24	46	21	19	27	17	25	15	297	4
<b>Munster</b>												
Clare	16	12	19	13	10	7	10	5	17	20	129	2
Cork	107	102	106	93	84	68	79	50	71	61	821	10
Kerry	31	43	44	24	28	15	14	13	29	24	265	3
Limerick	62	54	38	47	34	27	22	22	32	25	363	5
Tipperary	31	39	32	32	30	15	15	25	19	26	264	3
Waterford	29	31	33	32	24	17	13	14	18	16	227	3
<b>Connacht</b>												
Galway	49	38	34	26	38	24	30	18	23	33	313	4
Leitrim	7	10	6	4	7	4	4	3	7	8	60	1
Mayo	44	29	35	24	19	25	21	16	15	18	246	3
Roscommon	13	21	27	15	10	14	8	14	12	6	140	2
Sligo	26	6	22	23	9	9	7	8	9	7	126	2
<b>Ulster (part of)</b>												
Cavan	26	14	15	25	15	20	11	22	16	7	171	2
Donegal	52	49	51	33	44	16	32	24	21	20	342	4
Monaghan	6	16	37	22	7	4	17	6	14	9	138	2
<b>TOTAL</b>	1186	1047	1026	912	752	615	602	536	600	573	7849	100



# INTERNATIONAL COMPARISON

In 2004, Ireland had the lowest child road fatality rate per million population among the EU 15 (8 deaths per million). This rate has increased to 19 from 2004 to 2006. Comparing with the EU 15 member states the 2006 rate is not encouraging. However the 2006 rate represents 40.6 per cent reduction in child deaths per million populations compared to 1997 rate of 32

**Table 16: Child (0-14 years old) Road Fatalities by Year and Country, 1997-2006**

Countries	1997	1998	1999	2000	2001	2002	2003	2004	2005	2006
<b>EU 15</b>										
<b>Austria</b>	34	43	37	27	26	25	37	22	25	23
<b>Belgium</b>	54	87	65	52	63	36	32	26	37	32
<b>Denmark</b>	24	20	38	25	21	14	22	20	13	13
<b>Finland</b>	34	16	26	20	19	18	22	13	21	5
<b>France</b>	403	386	352	336	273	245	203	175	130	120
<b>Germany</b>	311	304	317	240	231	216	208	153	159	136
<b>Greece</b>	71	56	54	40	47	47	45	43	44	36
<b>Ireland</b>	27	34	23	22	26	18	16	7	9	16
<b>Italy</b>	170	144	140	126	165	188	133	113	-	-
<b>Luxembourg</b>	3	2	2	3	5	3	-	-	-	-
<b>Netherlands</b>	66	44	77	56	48	37	64	35	31	37
<b>Portugal</b>	121	130	83	75	56	62	55	48	31	22
<b>Spain</b>	184	208	209	182	160	151	156	127	120	115
<b>Sweden</b>	24	25	37	19	18	18	21	14	10	16
<b>UK</b>	228	179	196	162	185	149	133	137	114	140
<b>Other</b>										
<b>Australia</b>	118	105	105	114	88	84	106	78	76	78
<b>Canada</b>	205	159	175	145	136	159	113	95	103	96
<b>Japan</b>	320	354	275	239	298	284	234	239	190	163
<b>New Zealand</b>	45	46	32	41	33	31	27	25	31	25
<b>USA</b>	2668	2555	2483	2363	2209	2104	2141	2172	1946	1794

- figure currently unavailable

Source: IRTAD and CARE Database

Figure 9: Child (0-14 years old) road fatalities by year and country, 1997-2006

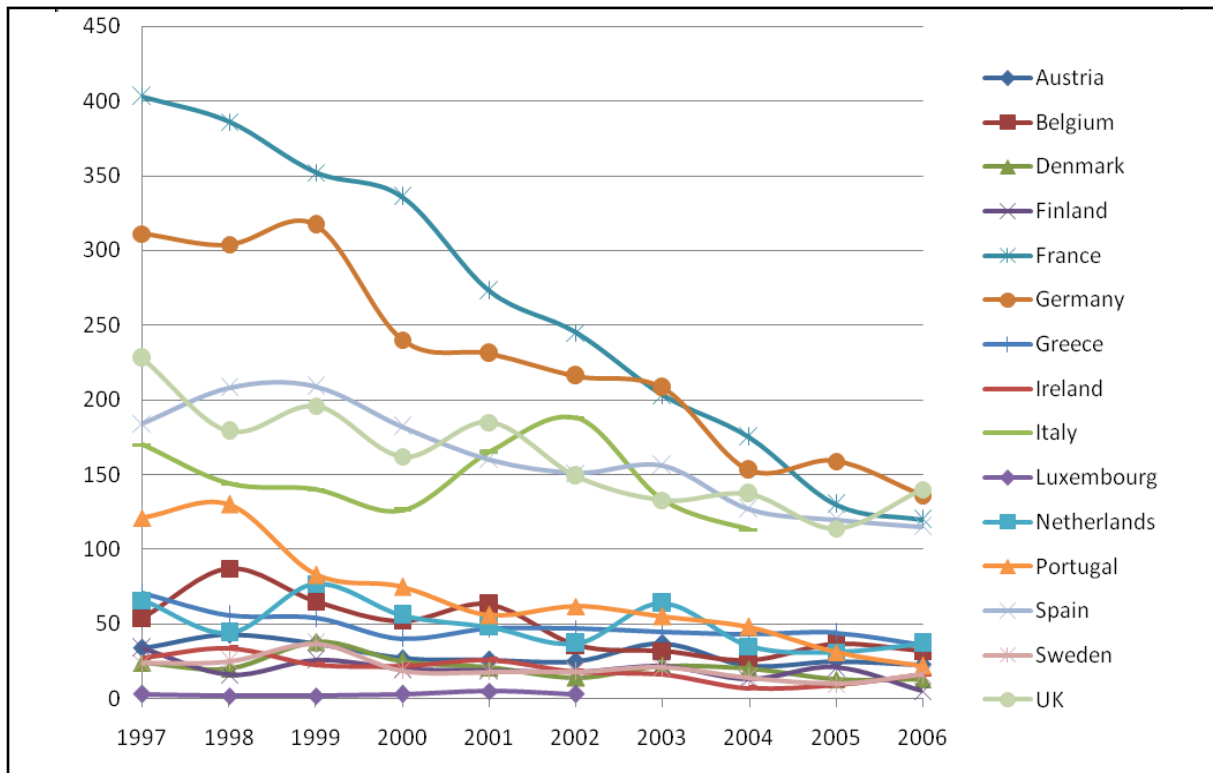


Figure 10: Child (0-14 years old) road fatalities per million population by year and country, 1997-2006

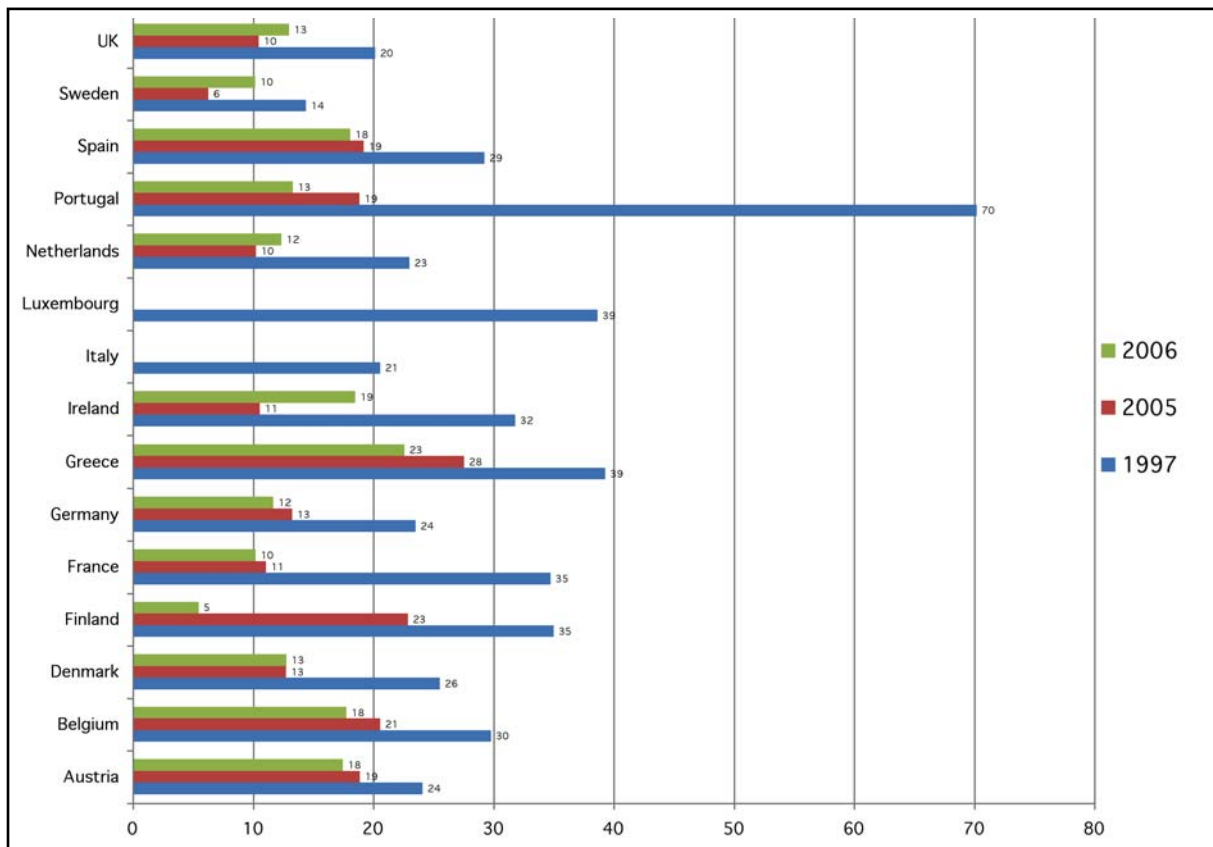


Table 17: Child (0-14 years old) Road Fatalities per Million Population by Year and Country, 1997-2006

Countries	1997	1998	1999	2000	2001	2002	2003	2004	2005	2006
Austria	24	31	27	20	19	19	28	17	19	18
Belgium	30	48	36	29	35	20	18	14	21	18
Denmark	26	21	39	25	21	14	22	20	13	13
Finland	35	17	27	21	20	19	24	14	23	5
France	35	33	30	29	24	21	17	15	11	10
Germany	24	23	24	19	18	17	17	13	13	12
Greece	39	32	31	24	28	29	28	27	28	23
Ireland	32	41	28	27	31	22	19	8	11	19
Italy	21	18	17	15	20	23	16	14	-	-
Luxembourg	39	25	25	37	60	36	-	-	-	-
Netherlands	23	16	26	19	16	12	21	12	10	12
Portugal	70	77	50	45	34	38	33	29	19	13
Spain	29	34	35	30	27	25	26	21	19	18
Sweden	14	15	22	12	11	11	13	9	6	10
UK	20	16	17	14	17	13	12	13	10	13

- figure currently unavailable

Table 18: Child (0-14 years old) Road Fatalities per Million Population by Year and Country, 1997-2006

EU (27 countries)	1997	1998	1999	2000	2001	2002	2003	2004	2005	2006
Austria	24	31	27	20	19	19	28	17	19	18
Belgium	30	48	36	29	35	20	18	14	21	18
Bulgaria	-	-	-	-	-	-	-	-	-	-
Cyprus	-	-	-	-	-	-	-	-	-	-
Czech Republic	36	22	27	32	23	28	24	17	27	21
Denmark	26	21	39	25	21	14	22	20	13	13
Estonia	-	-	-	-	-	-	-	-	-	-
Finland	35	17	27	21	20	19	24	14	23	5
France	35	33	30	29	24	21	17	15	11	10
Germany	24	23	24	19	18	17	17	13	13	12
Greece	39	32	31	24	28	29	28	27	28	23
Hungary	25	23	28	25	22	31	20	24	0	27
Ireland	32	41	28	27	31	22	19	8	11	19
Italy	21	18	17	15	20	23	16	14	-	-
Latvia	-	-	-	-	-	-	-	-	-	-
Lithuania	-	-	-	-	-	-	-	-	-	-
Luxembourg	39	25	25	37	60	36	39	-	-	-
Malta	-	-	-	-	-	-	-	-	-	-
Netherlands	23	16	26	19	16	12	21	12	10	12
Poland	48	43	37	35	36	35	34	35	26	24
Portugal	70	77	50	45	34	38	33	29	19	13
Romania	-	-	-	-	-	-	-	-	-	-
Slovakia	-	-	-	-	-	-	-	-	-	-
Slovenia	40	36	37	25	13	10	10	31	35	32
Spain	29	34	35	30	27	25	26	21	19	18
Sweden	14	15	22	12	11	11	13	9	6	10
UK	20	16	17	14	17	13	12	13	10	13

- figure currently unavailable

Source; NRA, and RSA, Road Collision Facts 1997 to 2006

# Working To Save Lives

## **Údarás Um Shábháilteacht Ar Bhóithre** **Road Safety Authority**

Páirc Ghnó Ghleann naMuaidhe, Cnoc an tSabhaircín,  
Bóthar Bhaile Átha Cliath, Béal an Átha, Co.Mhaigh Eo.  
Moy Valley Business Park, Primrose Hill, Dublin Road,  
Ballina, Co. Mayo.

**local:** 1890 50 60 80 **fax:** (096) 25 252

**email:** [info@rsa.ie](mailto:info@rsa.ie) **website:** [www.rsa.ie](http://www.rsa.ie)