

RSA

# Driver spotlight report: fatalities and serious injuries

2020-2024

Data is current as of 2 October 2025  
Prepared by the Research Department of the RSA  
Date of issue 19 December 2025

Deimhnithe ag  
CCCSE



ISSCoP  
Certified

VISION  
ZERO

# Background

- This report provides an overview of **fatalities and serious injuries among drivers** for the years 2020-2024.
- This report was prepared using data from the Irish Road Traffic Collision Database, which is based on collision records transferred from An Garda Síochána to the RSA.
- All information in this report for 2021 onwards **is provisional and subject to change**.
- This means that the fatality and serious injury statistics presented may change at a later date when new information becomes available.
- Note that the information in this report is based on **preliminary findings of the AGS investigation, at an early stage in the process**. It does not contain information on contributory factors from the final completed investigation process.
- Note, incidents that occur in **carparks and other non-public roads are excluded** from the RSA official figures per convention and consistent with all EU member states. However, AGS may include these collisions as they record incidents that have occurred in public places. This means RSA and AGS collision figures may differ.

# Definitions

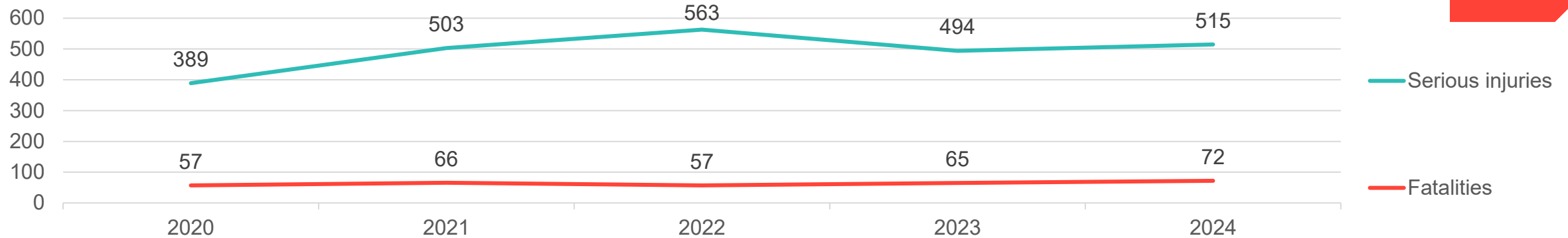
- A **fatality** is one where death occurs within 30 days of the date of the collision and is not the result of a medical cause or that of a deliberate act (e.g. suicide).
- A **serious injury** is one for which the person is detained in hospital as an in-patient, or any of the following injuries whether or not detained in hospital:
  - Fractures
  - Concussion
  - Internal Injuries
  - Crushing
  - Severe Cuts and Lacerations
  - Severe general shock requiring medical treatment

# Trend of Driver fatalities and serious injuries

## 2020-2024

VISION  
ZERO

RSA



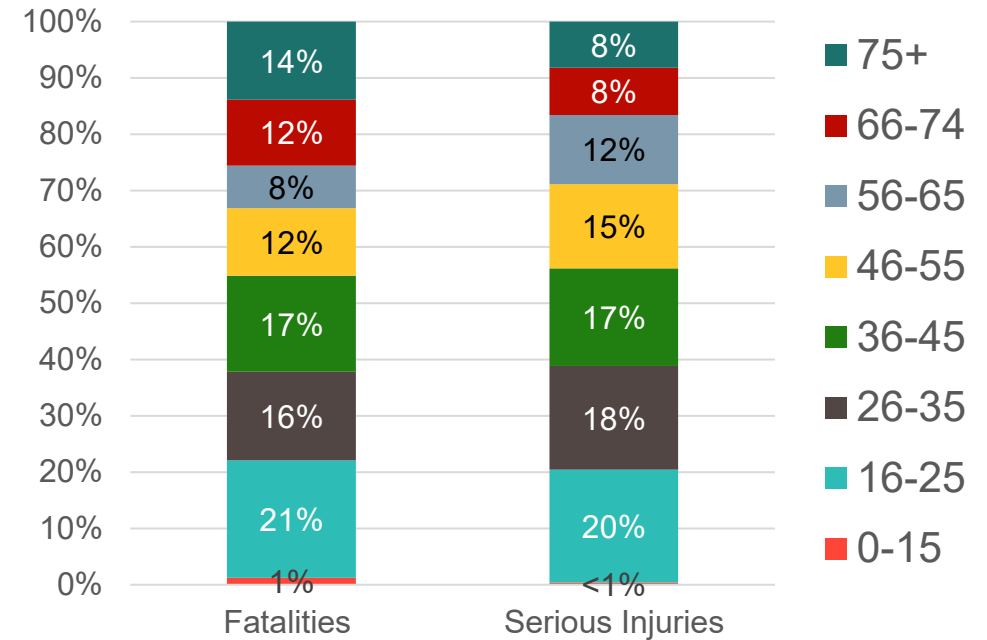
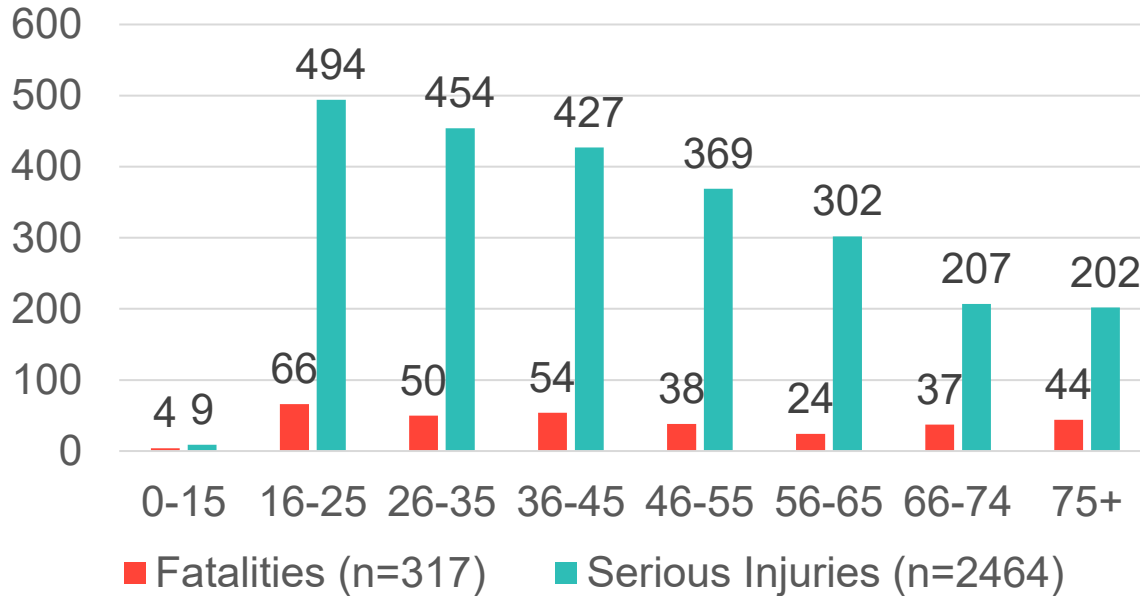
Injury (% of total)	2020	2021	2022	2023	2024
Fatalities	40%	50%	38%	36%	42%
Serious injuries	32%	34%	33%	34%	34%

- Between 2020 and 2024, 317 drivers were killed, and 2,464 drivers were seriously injured.
- An average of 63 drivers were killed and an average of 493 drivers were seriously injured each year during this five-year period.
- Drivers represent 41% of fatalities and 33% of serious injuries during this time period
- For every driver fatality there were approximately 8 drivers seriously injured.

*Note, figures for 2021-2024 are provisional and subject to change. There can be fluctuations in serious injury numbers until such a time as the data is deemed to be final. The above figures are available on the CSO's PxStat Open Data Statistical Database. They are directly accessible on table ROA40 via the following weblink: <https://data.cso.ie/table/ROA40>*

# Driver fatalities and serious injuries by age group

2020-2024



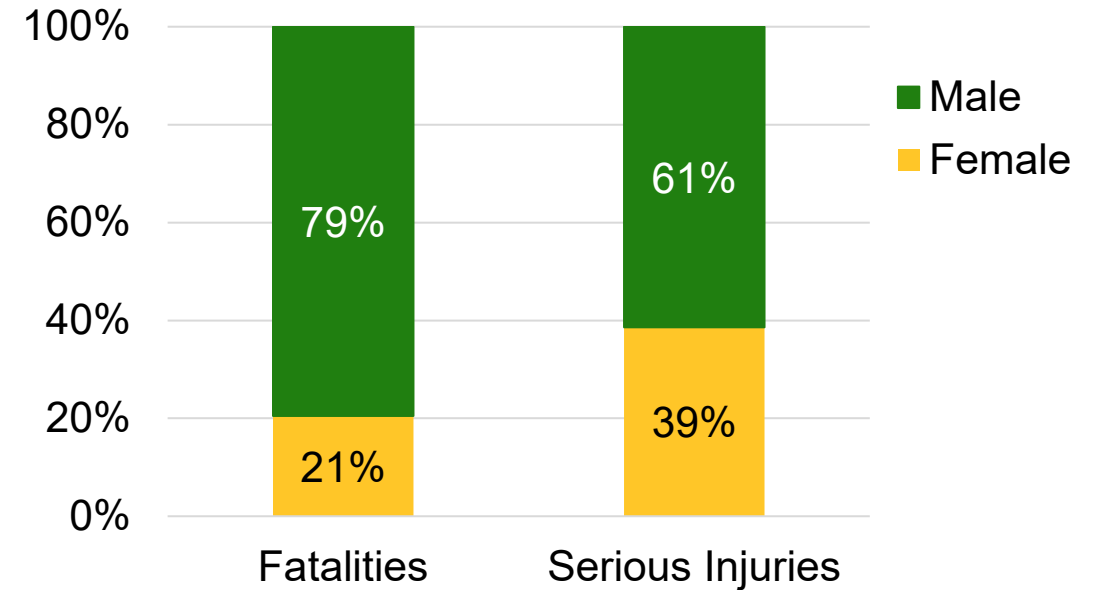
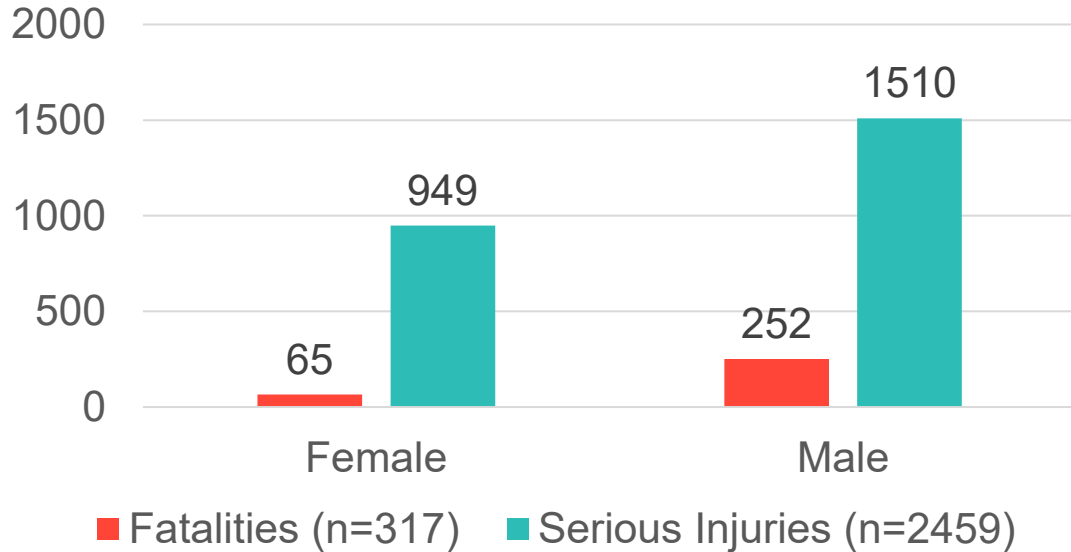
One in two driver fatalities (54%) were aged 16-45 years and one in two (56%) seriously injured drivers were aged 16-45 years.

A quarter (26%) of fatalities were aged 66+ years compared to 17% of seriously injured drivers.

Note, figures are provisional and subject to change. Percentages may not add to 100% due to rounding of percentages. The above serious injury figures are available on the CSO's PxStat Open Data Statistical Database. They are directly accessible on table ROA42 via the following weblink: <https://data.cso.ie/table/ROA42>

# Driver fatalities and serious injuries by gender

2020-2024

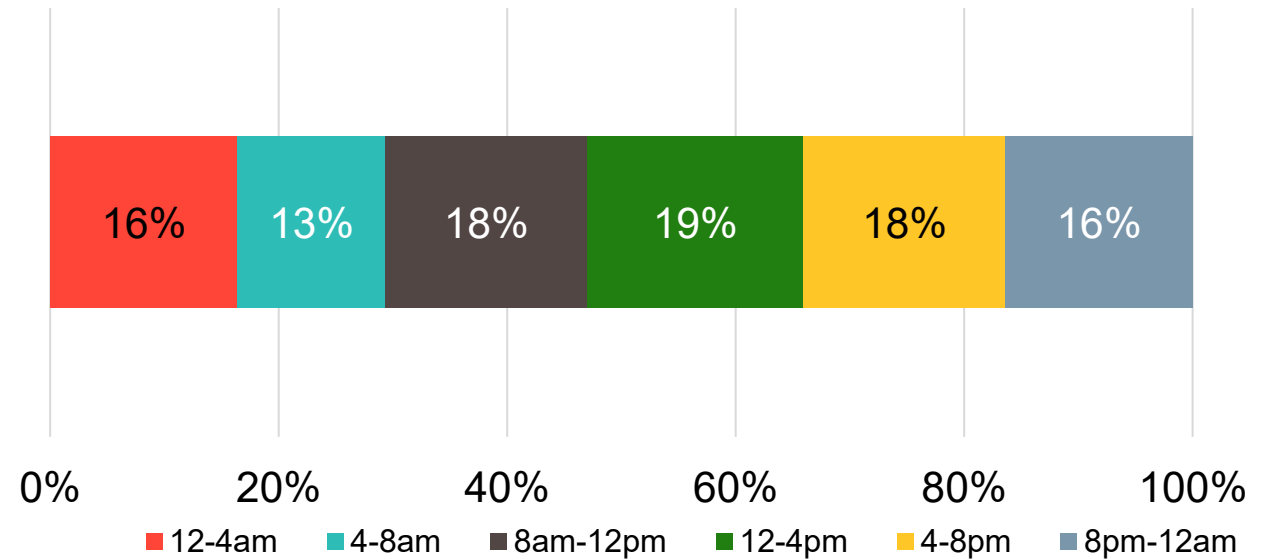
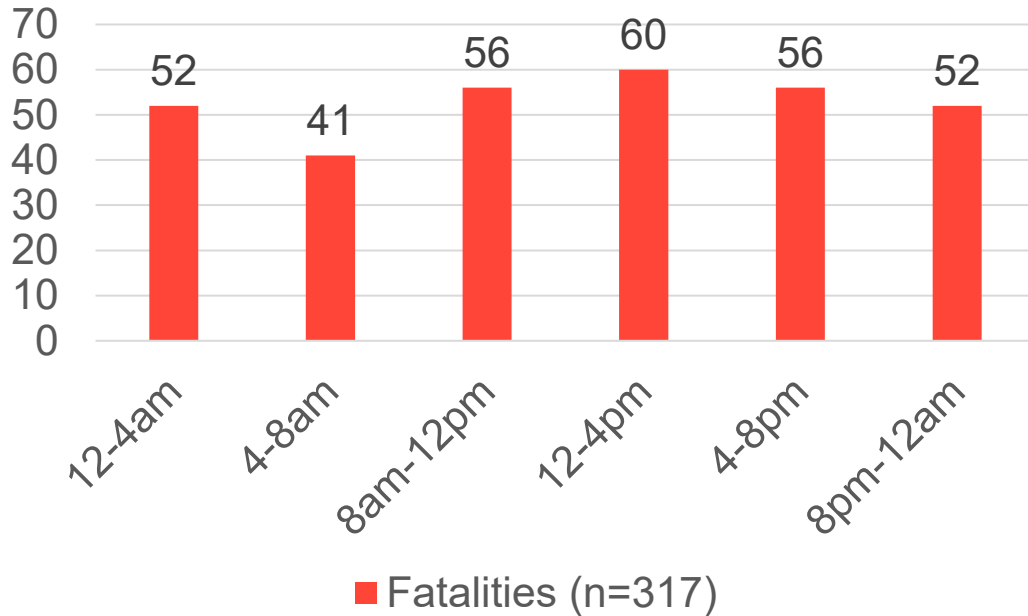


Almost eight in ten (252, 79%) of driver fatalities were male, while of seriously injured drivers six in ten (1510, 61%) were male.

*Note, figures are provisional and subject to change. Note, gender of five seriously injured drivers are unknown at present. The above serious injury figures are available on the CSO's PxStat Open Data Statistical Database. They are directly accessible on table ROA41 via the following weblink: <https://data.cso.ie/table/ROA41>*

# Driver fatalities by time of day

2020-2024

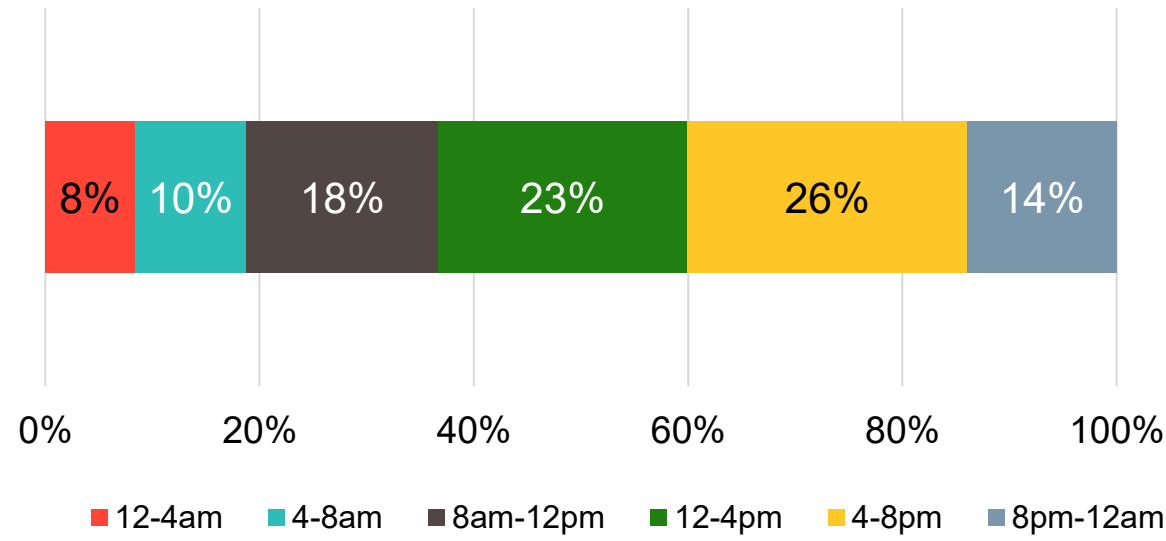
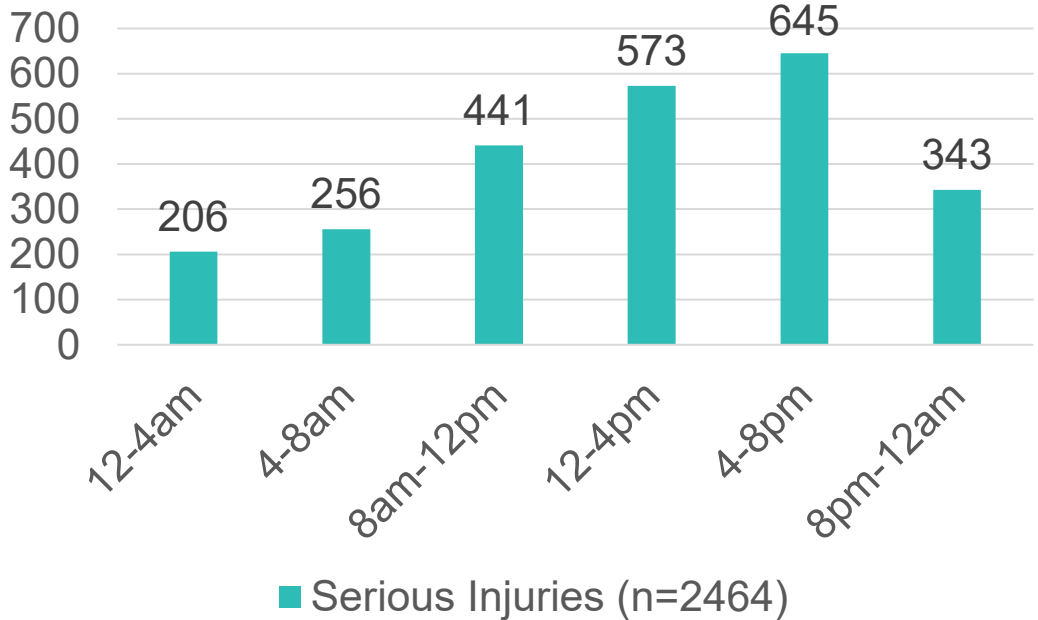


Over half (172, 54%) of fatalities occurred between 8am and 8pm. Close to half (172, 46%) of fatalities occurred between 8pm and 8am when traffic volumes are typically lower.

*Note, figures are provisional and subject to change.*

# Driver serious injuries by time of day

2020-2024



Serious injuries peak in the early afternoon into the evening. Half of serious injuries (1218, 49%) occurred between 12pm and 8pm.

High percentage shares of serious injuries occurred in particular between 3pm and 7pm (718, 29%)

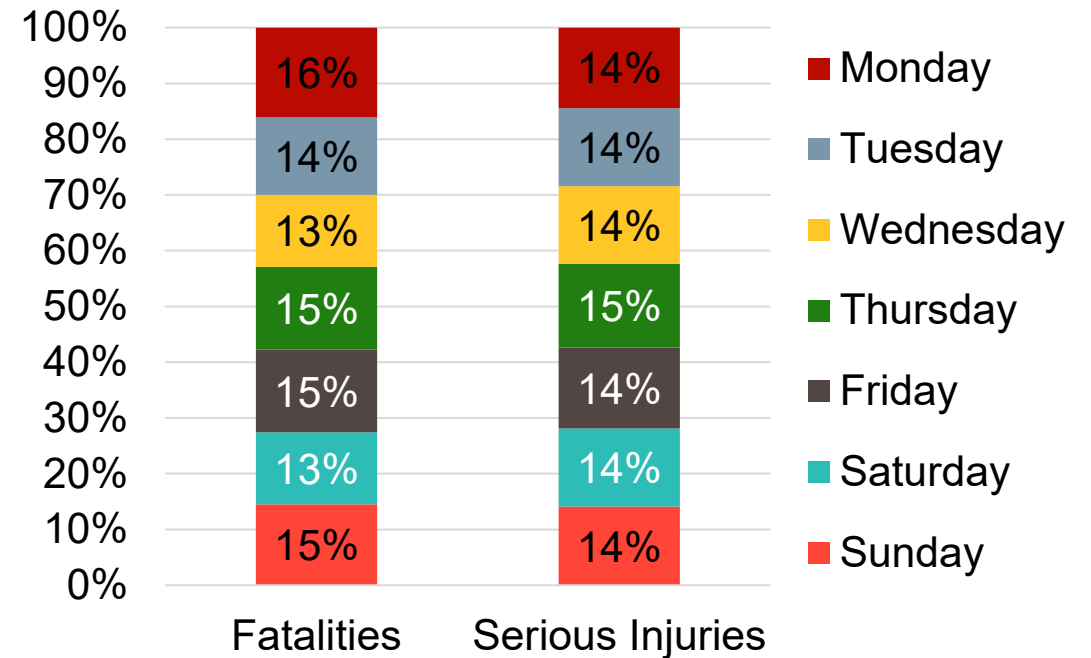
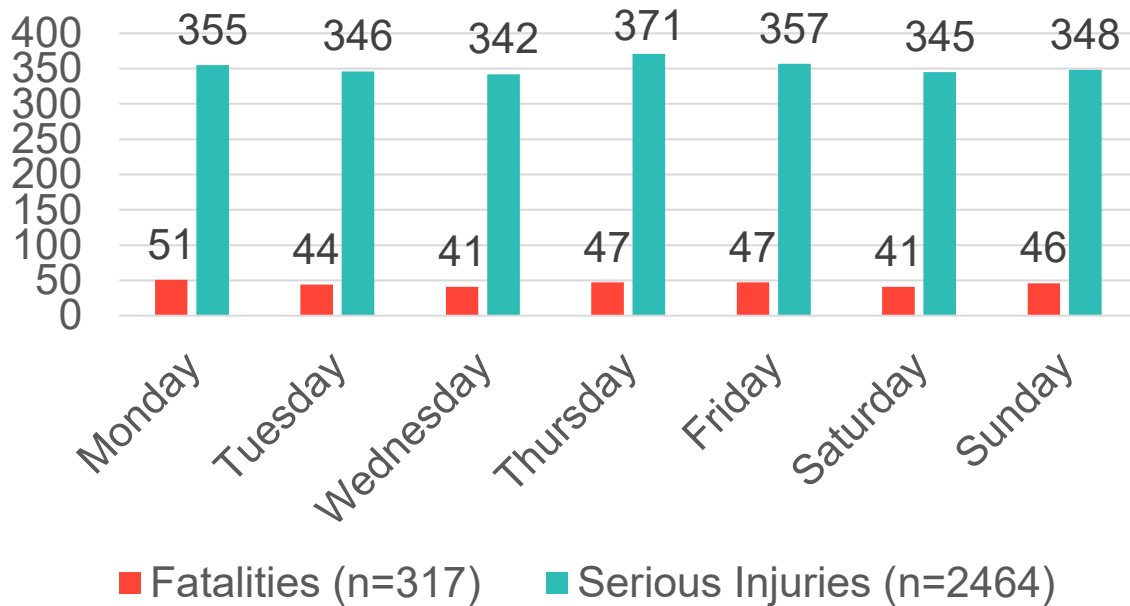
Note, figures are provisional and subject to change. Percentages may not add to 100% due to rounding of percentages. The above serious injury figures are available on the CSO's PxStat Open Data Statistical Database. They are directly accessible on table ROA43 via the following weblink: <https://data.cso.ie/table/ROA43>



# Driver fatalities and serious injuries by day of week



2020-2024



Monday was the most dangerous day (51, 16%) for fatalities. Thursday was the most dangerous day (371, 15%) for seriously injured drivers.

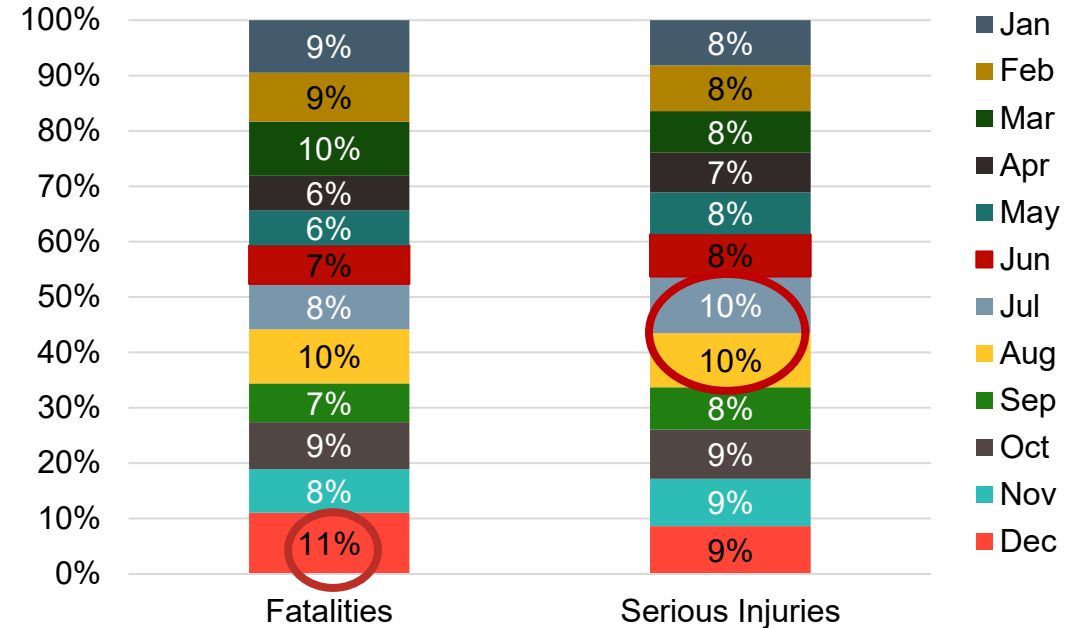
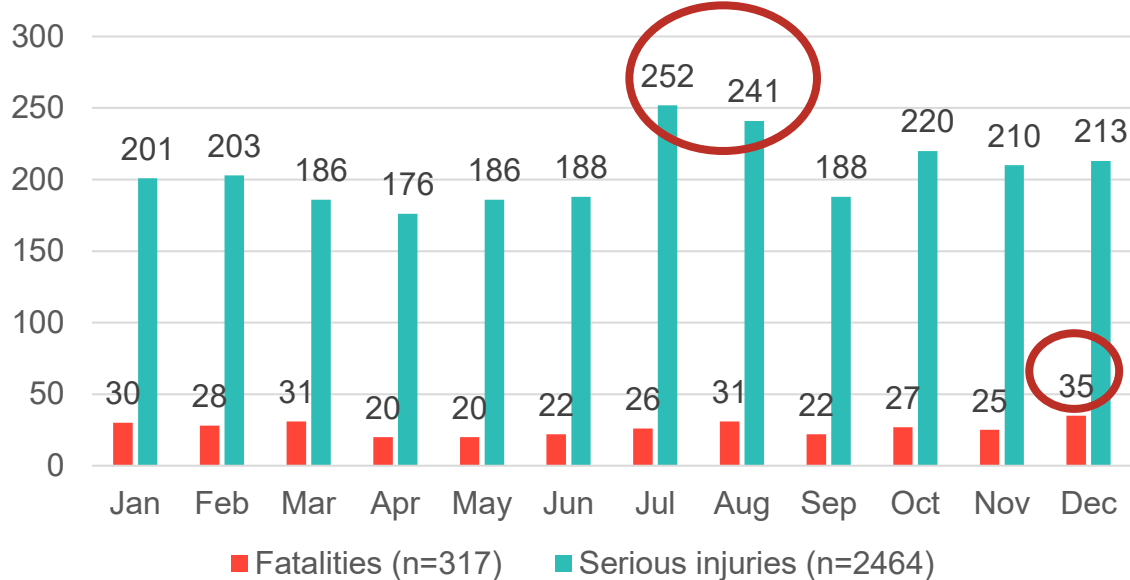
Note, figures are provisional and subject to change. Percentages may not add to 100% due to rounding of percentages. The above serious injury figures are available on the CSO's PxStat Open Data Statistical Database. They are directly accessible on table ROA45 via the following weblink: <https://data.cso.ie/table/ROA45>



# Driver fatalities and serious injuries by month of year



## 2020-2024



Highest proportion of fatalities (35, 11%) occurred in December, while high numbers of serious injuries occurred in July and August (20%, 493).

An increase in serious injuries is seen from April to July, with the peak-time for serious injuries in July (252, 10%).

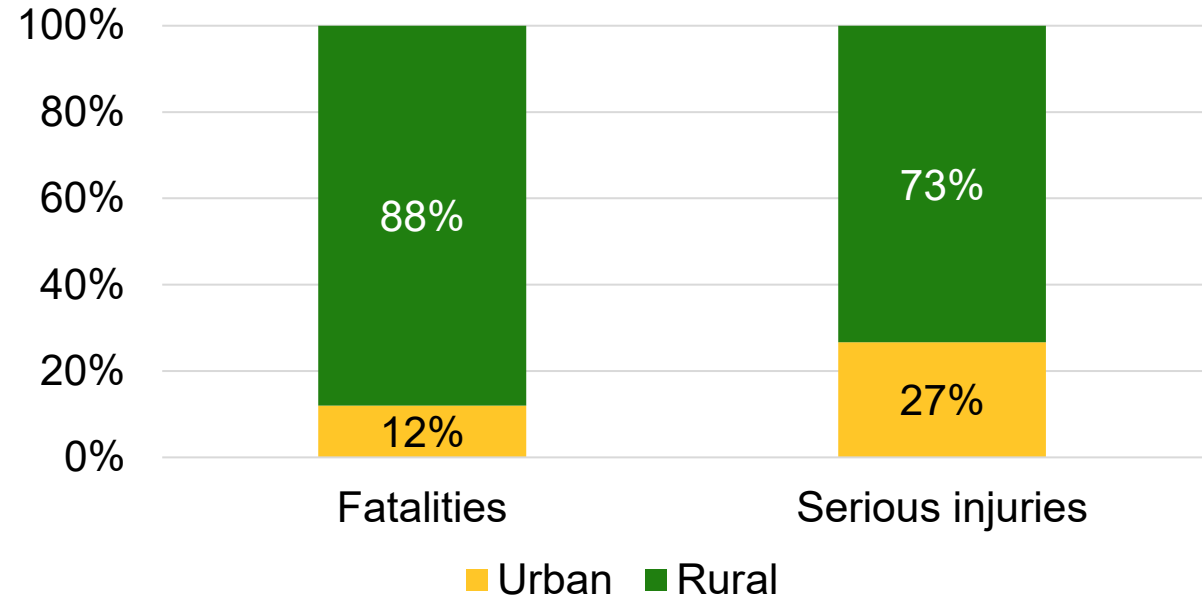
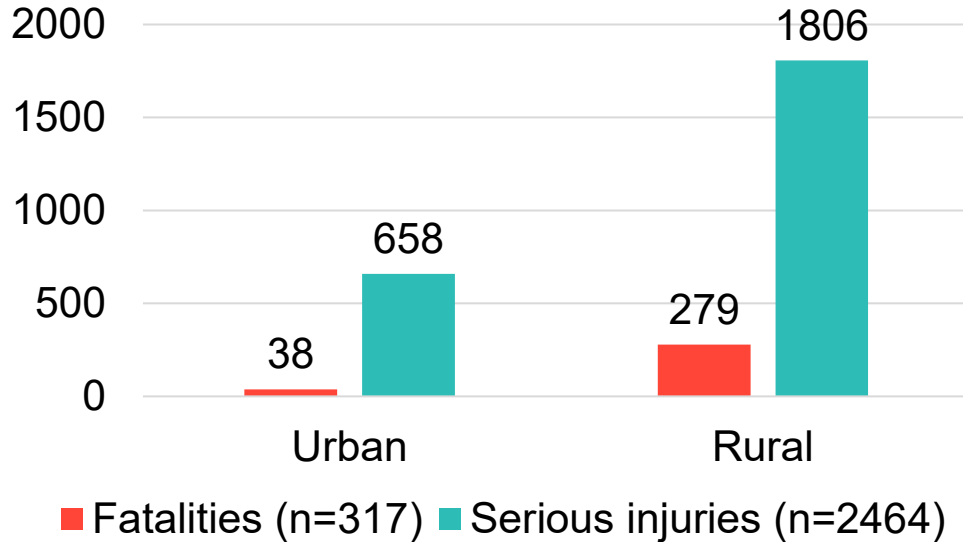
*Note, figures are provisional and subject to change. Percentages may not add to 100% due to rounding of percentages. The above serious injury figures are available on the CSO's PxStat Open Data Statistical Database. They are directly accessible on table ROA46 via the following weblink: <https://data.cso.ie/table/ROA46>*



# Driver fatalities and serious injuries by urban/rural area



2020-2024



An urban road has a speed limit of 60km/h or less, while a rural road has a speed limit of 80km/h or more. Over eight in ten driver fatalities occurred on rural roads (279, 88%), and over seven in ten drivers were seriously injured on rural roads (1806, 73%).

*Note, figures are provisional and subject to change. \* This urban/ rural categorisation applies prior to 2025 given that in February 2025 the speed limit of Local Rural roads reduced to 60km/h. The above serious injury figures are available on the CSO's PxStat Open Data Statistical Database. They are directly accessible on table ROA47 via the following weblink: <https://data.cso.ie/table/ROA47>*

# Driver fatalities and serious injuries by county 2020-2024



Driver fatalities were highest in counties: Meath (9%), Cork (7%), Donegal (7%), and Mayo (7%).

The number of seriously injured drivers was highest in counties: Cork (13%), Dublin (11%), Donegal (6%) and Meath (6%).

County	Fatalities		Serious injuries	
	n	%	n	%
Carlow	3	1%	30	1%
Cavan	10	3%	67	3%
Clare	11	3%	72	3%
Cork	23	7%	308	13%
Donegal	21	7%	154	6%
Dublin	15	5%	264	11%
Galway	15	5%	132	5%
Kerry	18	6%	100	4%
Kildare	9	3%	110	4%
Kilkenny	11	3%	70	3%
Laois	4	1%	51	2%
Leitrim	3	1%	29	1%
Limerick	16	5%	129	5%
Longford	4	1%	41	2%
Louth	14	4%	80	3%
Mayo	21	7%	98	4%
Meath	27	9%	149	6%
Monaghan	9	3%	71	3%
Offaly	9	3%	47	2%
Roscommon	13	4%	53	2%
Sligo	10	3%	43	2%
Tipperary	15	5%	101	4%
Waterford	8	3%	40	2%
Westmeath	7	2%	51	2%
Wexford	17	5%	114	5%
Wicklow	4	1%	60	2%
<b>Total</b>	<b>317</b>	<b>100%</b>	<b>2464</b>	<b>100%</b>

Note, figures are provisional and subject to change. The above serious injury figures are available on the CSO's PxStat Open Data Statistical Database. They are directly accessible on table ROA52 via the following weblink: <https://data.cso.ie/table/ROA52>

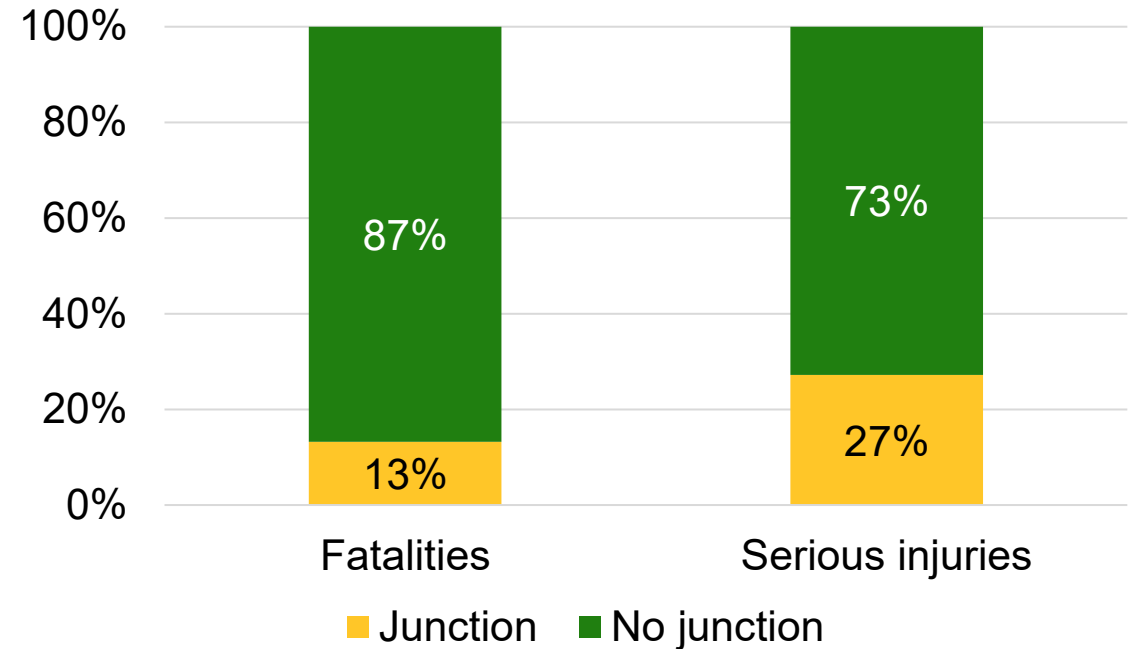
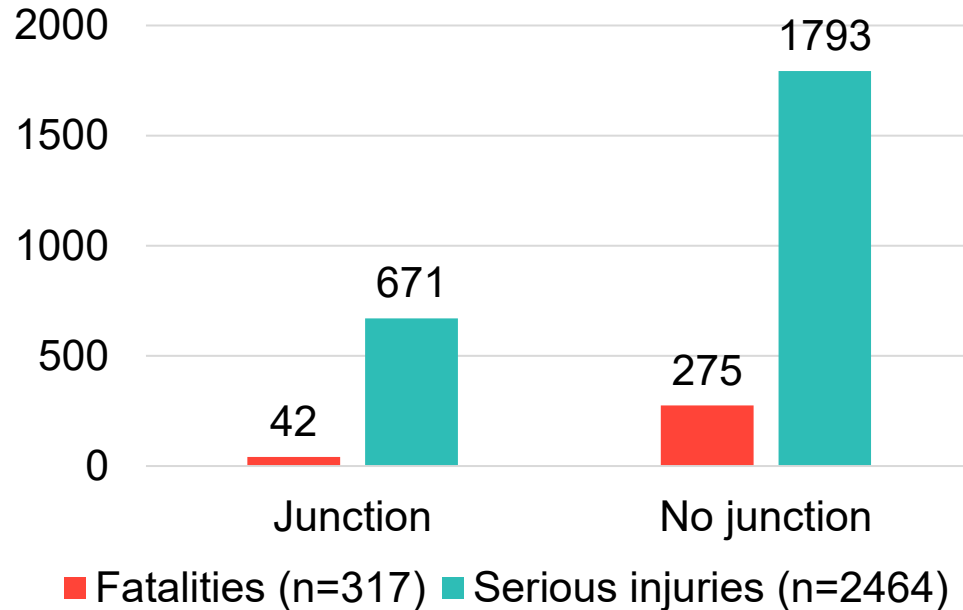


# Driver fatalities and serious injuries by junction

VISION ZERO



2020-2024



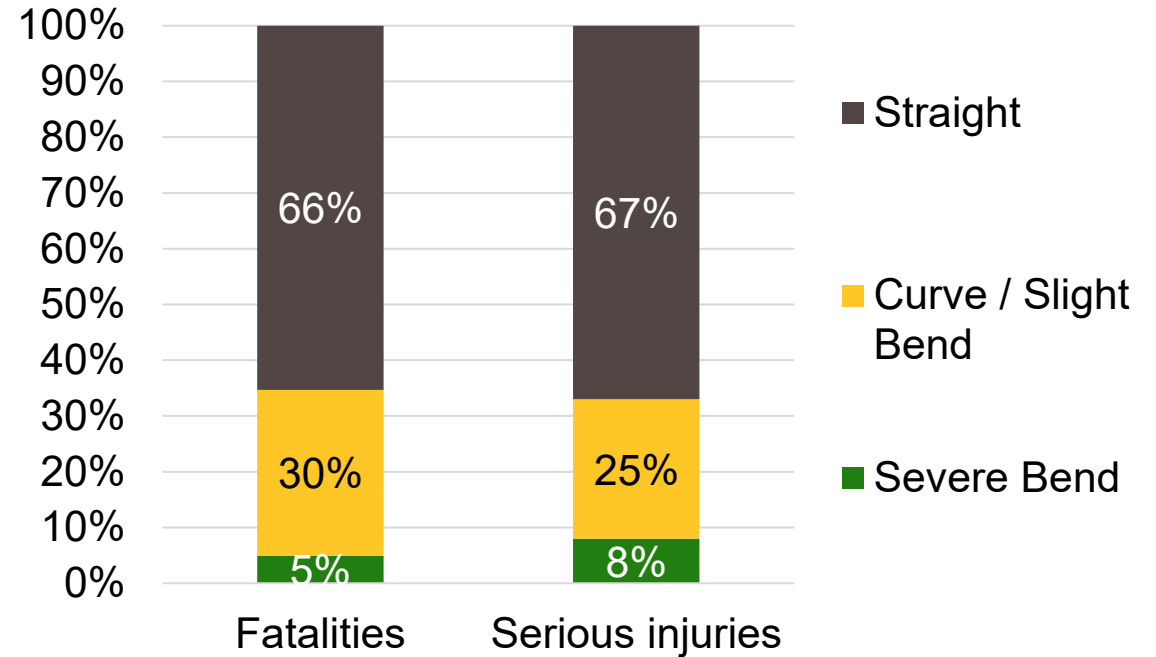
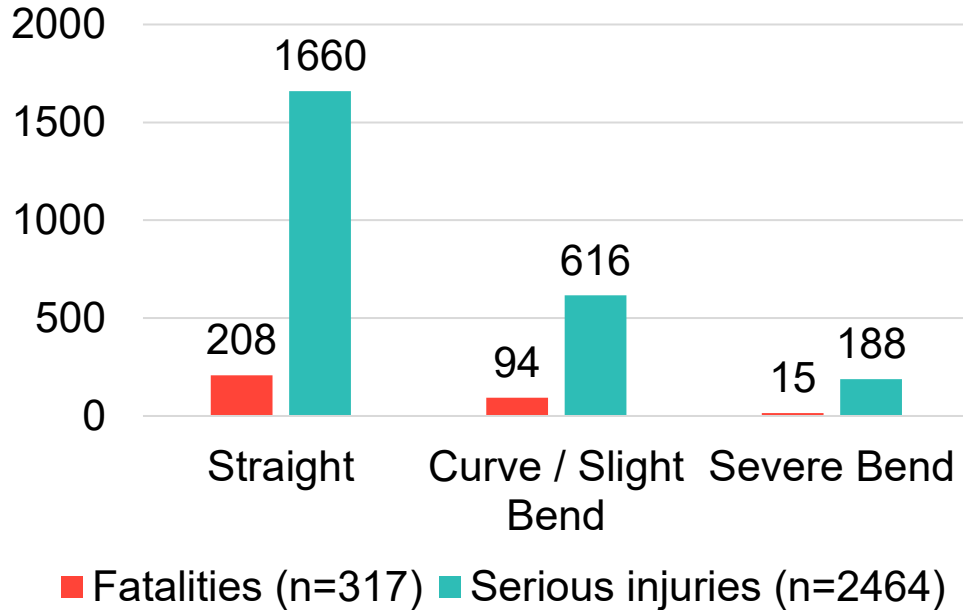
Of fatalities, 13% occurred at a junction, while 27% of serious injuries occurred at a junction. Of those injured at a junction, the junction type was most likely to have been a T-junction (49% fatalities and 49% serious injuries at a junction occurred at a T-junction).

Note, figures are provisional and subject to change. The above serious injury figures are available on the CSO's PxStat Open Data Statistical Database. They are directly accessible on table ROA48 via the following weblink: <https://data.cso.ie/table/ROA48>



# Driver fatalities and serious injuries by road character

2020-2024



High proportions of fatalities (208, 66%) and serious injuries (1660, 67%) occurred on a straight road. Three in ten (94, 30%) fatalities and one in four (616, 25%) serious injuries occurred on a road with a curve or slight bend.

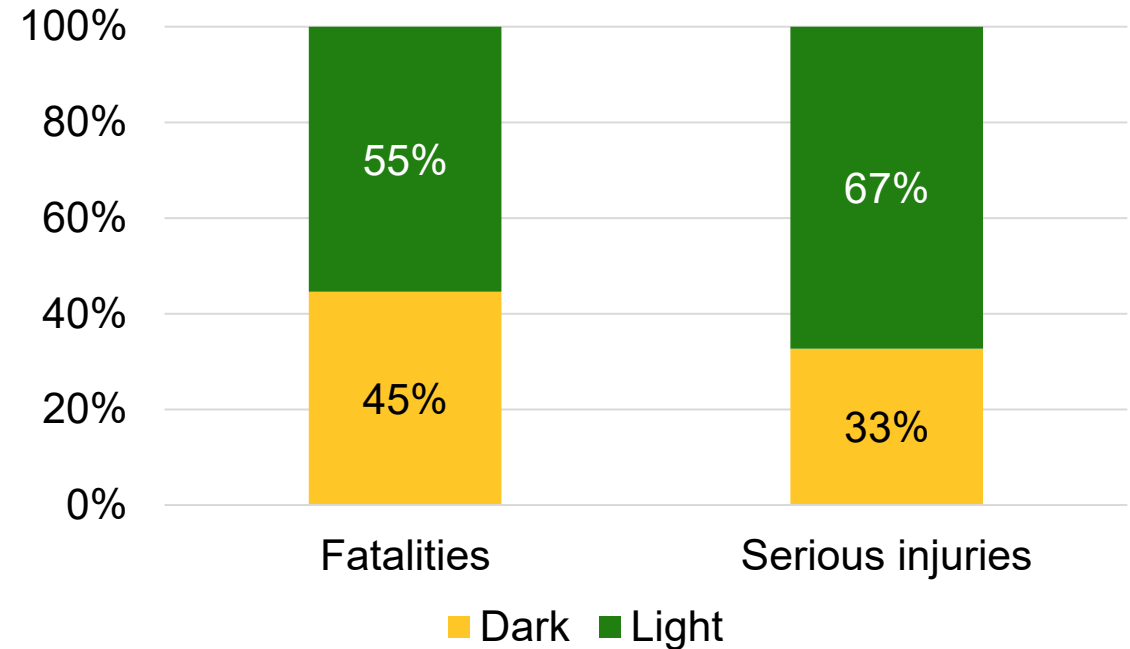
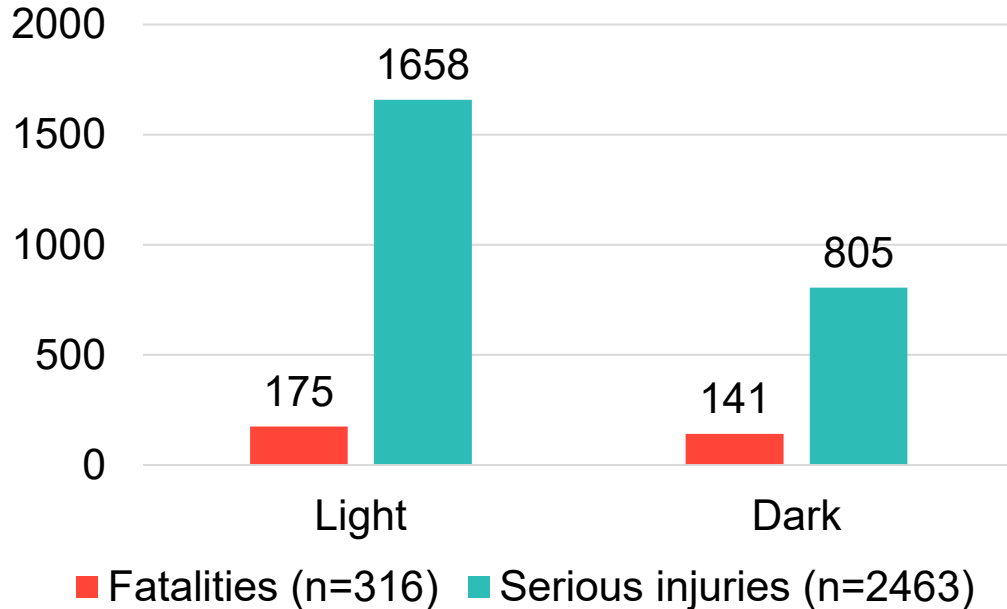
Note, figures are provisional and subject to change. Percentages may not add to 100% due to rounding of percentages. The above serious injury figures are available on the CSO's PxStat Open Data Statistical Database. They are directly accessible on table ROA49 via the following weblink: <https://data.cso.ie/table/ROA49>

# Driver fatalities and serious injuries by light conditions

VISION ZERO

RSA

2020-2024

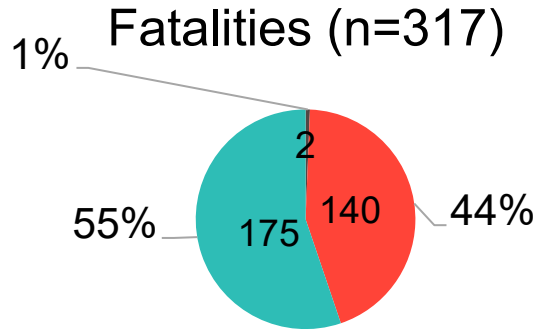


Over half of driver fatalities (55%) and two in three driver serious injuries (67%) occurred in day light hours.

Note, figures are provisional and subject to change. Light conditions unknown for 1 fatally injured driver and 1 seriously injured driver. The above serious injury figures are available on the CSO's PxStat Open Data Statistical Database. They are directly accessible on table ROA50 via the following weblink: <https://data.cso.ie/table/ROA50>

# Driver fatalities and serious injuries by collision type

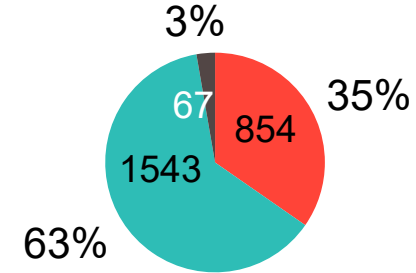
## 2020-2024



■ Hit and Run ■ SVC ■ MVC

- Of fatalities, 44% were involved in a single vehicle collision (SVC), 55% were involved in a multiple vehicle collision (MVC), and 1% were involved in a hit and run collision.
- Of those drivers killed in single vehicle collisions, 41 (29%) collided with a wall, 32 (23%) collided with a road edge ditch and 24 (17%) collided with a tree.
- Of those killed in multiple vehicle collisions, 129 (74%) were injured in a head-on collision

## Serious injuries (n=2,464)



■ SVC ■ MVC ■ Hit & Run

- Of seriously injured drivers, 35% were involved in a single vehicle collision, 63% were involved in a multiple vehicle collision and 3% were involved in a hit and run collision.
- Of those drivers injured in single vehicle collisions, 250 (29%) collided with a road edge ditch, 217 (25%) collided with a wall, and 57 (7%) collided with a pole/post
- Of those injured in multiple vehicle collisions, 775 (50%) were injured in a head-on collision.

Note, figures are provisional and subject to change. Percentages may not add to 100% due to rounding of percentages. A single vehicle collision involved the driver's vehicle only, while a multiple vehicle collision involved at least one other vehicle. The above serious injury figures are available on the CSO's PxStat Open Data Statistical Database. They are directly accessible on table ROA51 via the following weblink: <https://data.cso.ie/table/ROA51>

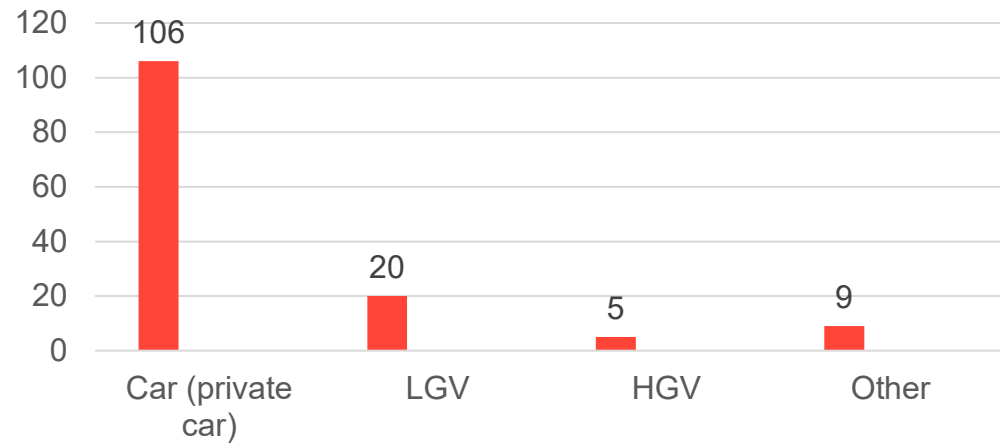


# Driver fatalities and serious injuries in single vehicle collisions (SVCs) by vehicle type



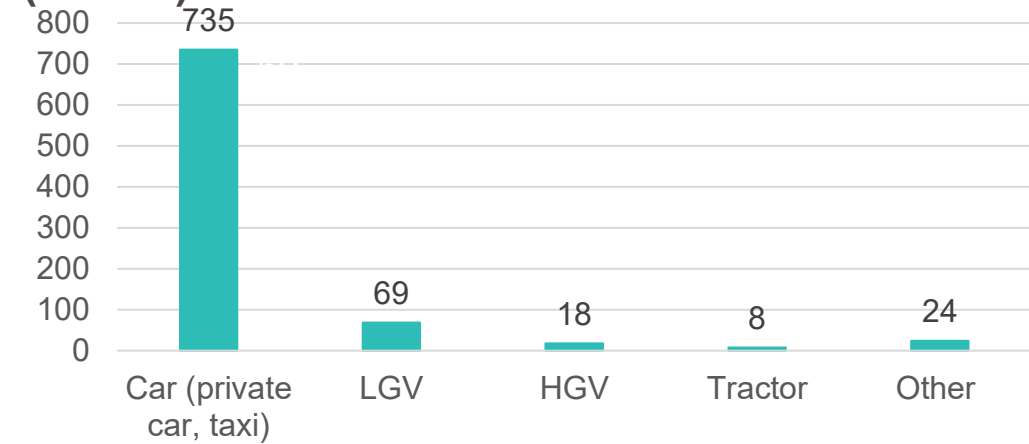
2020-2024

Drivers killed in SVCs by vehicle type (n=140)



Of driver fatalities involved in single vehicle collisions, the driver was most likely to be driving a car (106, 76%).

Drivers seriously injured in SVCs by vehicle type (n=854)



Of seriously injured drivers involved in single vehicle collisions the driver was most likely to be driving a car (735, 86%).

*Note, figures are provisional and subject to change. A single vehicle collision involved the driver's vehicle only.*






# Driver actions and vehicle actions




## Drivers killed and seriously injured in single vehicle collisions

### 2020-2024

#### Fatalities in single vehicle collisions (n=140)

-  The most noted action among these driver fatalities was 'lost control' (59, 42%)
-  Of these drivers, the majority were driving forward (138, 99%)
-  106 (76%) of these drivers were the sole occupant of their vehicle

#### Seriously injured drivers in single vehicle collisions (n=854)

-  The most noted action among these seriously injured drivers was 'lost control' (415, 49%)
-  Of these drivers, the majority were driving forward (809, 95%)
-  647 (76%) of these drivers were the sole occupant of their vehicle

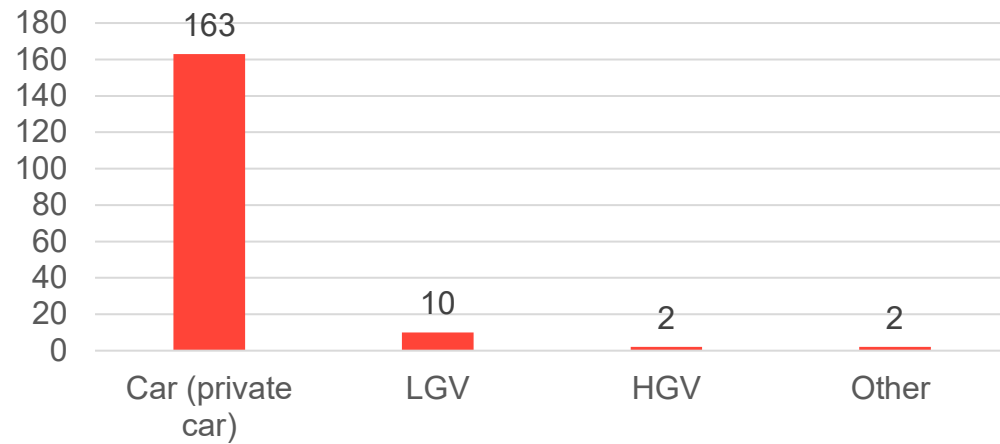
*Note, figures are provisional and subject to change.*

# Driver fatalities and serious injuries in multiple vehicle collisions (MVCs) by vehicle type



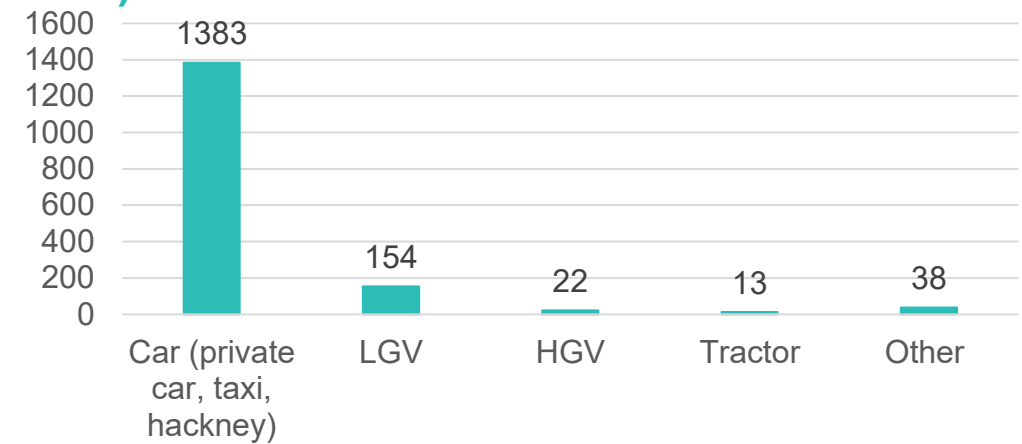
2020-2024

Drivers killed in MVCs by vehicle type (n=177)



Of driver fatalities involved in multiple vehicle collisions, the driver was most likely to be driving a car (163, 92%).

Drivers seriously injured in MVCs by vehicle type (n=1610)



Of seriously injured drivers involved in multiple vehicle collisions the driver was most likely to be driving a car (1383, 86%).

*Note, figures are provisional and subject to change. A single vehicle collision involved the driver's vehicle only, while a multiple vehicle collision involved at least one other vehicle.*



# Driver actions and vehicle actions

## Drivers injured in multiple vehicle collisions 2020-2024

### Fatalities in multiple vehicle collisions (n=177)

- ❏ The most noted action among these driver fatalities was 'went to wrong side of road' (51, 29%)
- ❏ A large proportion of these drivers were driving forward at the time of the collision (145, 82%)

### Seriously injured drivers in multiple vehicle collisions (n=1610)

- ❏ The most noted actions among these drivers were 'failed to observe' (283, 18%), and 'went to wrong side of road' (129, 8%)
- ❏ A large proportion of these drivers were driving forward at the time of the collision (1265, 79%) and a lesser proportion were turning right (120, 7%)

*Note, figures are provisional and subject to change.*

# Licence Type of driver fatalities and serious injuries whose vehicles require a licence



2020-2024

- Of driver casualties:
  - 8 in 10 had a full licence.
  - 5% had a foreign licence
  - 4% had no licence
  - 5% had a learner permit

Licence Type	Fatalities		Serious		Total	
	n	%	n	%	n	%
Full licence	228	72%	2027	82%	2255	81%
No licence	16	5%	95	4%	111	4%
Foreign licence	17	5%	117	5%	134	5%
Disqualified	8	3%	26	1%	34	1%
Learner accompanied	2	1%	17	1%	19	1%
Learner unaccompanied	10	3%	117	5%	127	5%
Novice Driver Licence	0	0%	5	0%	5	0%
Exempt driver	0	0%	2	0%	2	0%
Unknown at present	34	11%	51	2%	85	3%
<b>Total</b>	<b>315</b>	<b>100%</b>	<b>2457</b>	<b>100%</b>	<b>2772</b>	<b>100%</b>

*Note, figures are provisional and subject to change. Percentages may not add to 100% due to rounding of percentages. While some values in the table above are not actual licence categories, please note, the data is recorded in this way in the collision database.*



# Driver casualties whose vehicles require Tax, NCT/CRVT and Insurance



## Driver fatalities (n=315)

	Tax		NCT/CRVT		Insured	
	n	%	n	%	n	%
<b>Yes</b>	212	67%	190	60%	231	73%
<b>No</b>	25	8%	23	7%	39	12%
<b>Unknown/ Not applicable</b>	78	25%	102	32%	45	14%
<b>Total</b>	<b>315</b>	<b>100%</b>	<b>315</b>	<b>100%</b>	<b>315</b>	<b>100%</b>

Of driver fatalities, 8% had no tax, 7% had no NCT, and 12% had no insurance.

## Seriously injured drivers (n=2457)

	Tax		NCT/CRVT		Insured	
	n	%	n	%	n	%
<b>Yes</b>	2056	84%	1840	75%	2210	90%
<b>No</b>	143	6%	127	5%	182	7%
<b>Unknown/ Not applicable/ Certification of exemption</b>	258	11%	490	20%	65	3%
<b>Total</b>	<b>2457</b>	<b>100%</b>	<b>2457</b>	<b>100%</b>	<b>2457</b>	<b>100%</b>

Of seriously injured drivers, 6% had no tax, 5% had no NCT, and 7% had no insurance.

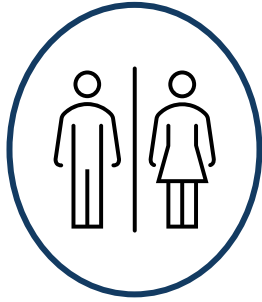
*Note, figures are provisional and subject to change.*



# Summary of driver fatalities and serious injuries, 2020-2024

VISION  
ZERO

RSA



## Age and gender

Over half were **aged 16-45 years**.

Almost eight in ten fatalities and six in ten seriously injured drivers were **male**.



## Time, day, month

Over half of fatalities between **8am-8pm** and half of serious injuries between **12pm-8pm**.

**Monday** most dangerous (16%) for fatalities, **Thursday** most dangerous (15%) for seriously injured drivers

**Serious injuries** peaked in **July and August**. Highest number of driver fatalities in **December (11%)**



## Location

Over eight in ten driver fatalities and over seven in ten seriously injured drivers injured on **rural roads**.

Small proportions of fatalities (13%) and serious injuries (27%) were sustained **at a junction**, and **high proportions** were sustained on **straight road**.

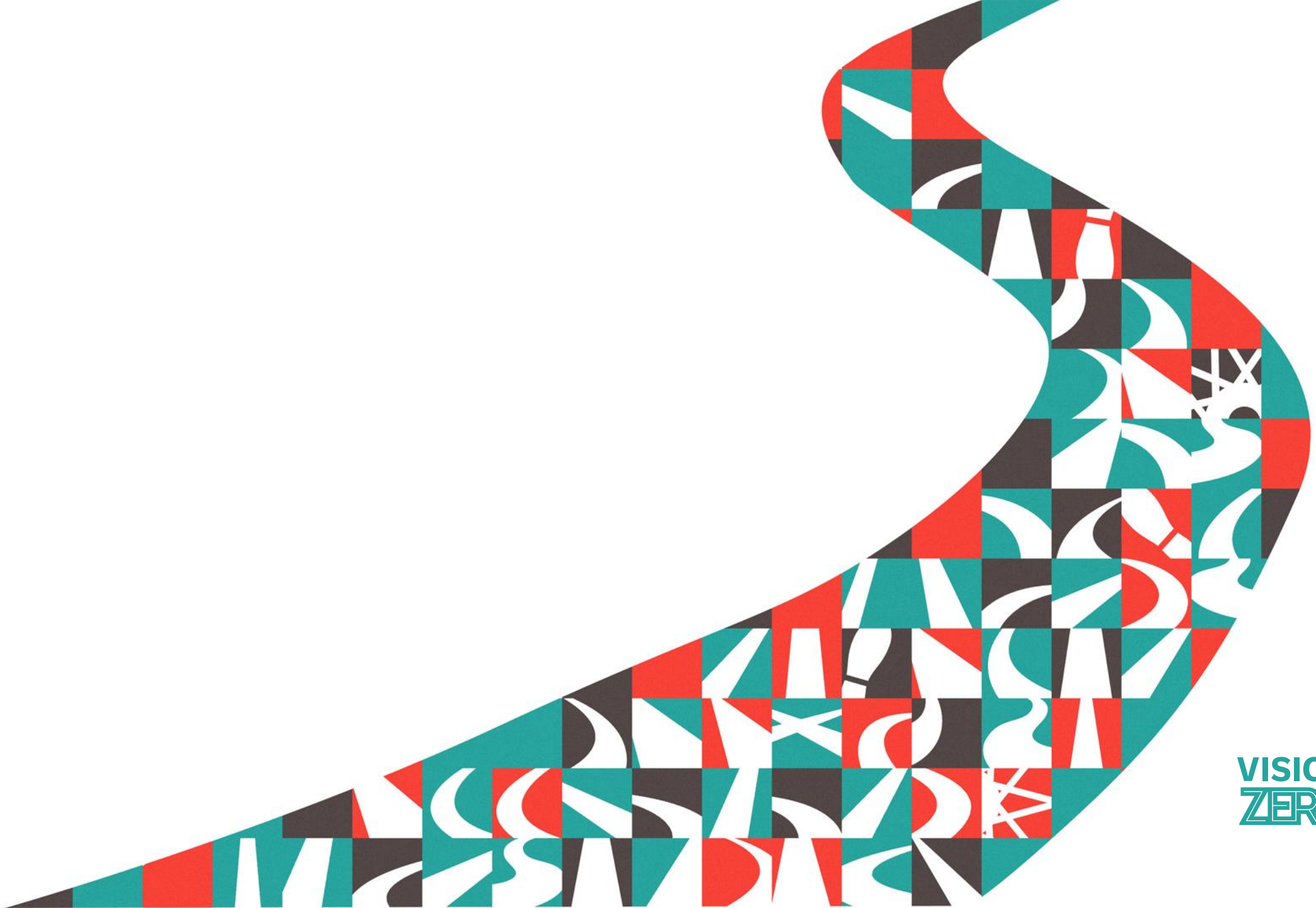


## Collision type

Over half of fatalities and two in three driver serious injuries occurred in **daylight hours**.

Over half of drivers killed, and two in three drivers seriously injured were injured in **multiple vehicle collisions**.

*Note, figures are provisional and subject to change.*



VISION  
ZERO

# Drivers involved in fatal and serious injury collisions

Supplementary analysis

# All drivers involved in fatal collisions

2020-2024

# Injury status of all drivers involved in fatal collisions (n=923 drivers)



## 2020-2024

- There were 923 drivers involved in fatal collisions between 2020-2024.
- Not all drivers involved in fatal collisions were fatally injured.
- Of those 923 drivers involved, 34% (317) were killed, 10% (92) seriously injured, 15% (141) sustained a minor injury and 40% (373) were not injured.

Injury of driver involved	2020		2021		2022		2023		2024		Total	
	n	%	n	%	n	%	n	%	n	%	n	%
<b>Fatal</b>	57	35%	66	39%	57	30%	65	32%	72	37%	317	34%
<b>Serious</b>	17	10%	15	9%	16	8%	24	12%	20	10%	92	10%
<b>Minor</b>	19	12%	24	14%	39	20%	25	12%	34	17%	141	15%
<b>Not Injured</b>	71	43%	64	38%	80	42%	89	44%	69	35%	373	40%
<b>Total</b>	<b>164</b>	<b>100%</b>	<b>169</b>	<b>100%</b>	<b>192</b>	<b>100%</b>	<b>203</b>	<b>100%</b>	<b>195</b>	<b>100%</b>	<b>923</b>	<b>100%</b>

Note, figures are provisional and subject to change. Drivers involved in fatal collisions may have been fatally injured, seriously injured, minorly injured or not injured.



# Age profile of all drivers involved in fatal collisions (n=923 drivers)



## 2020-2024

- There were 923 drivers involved in fatal collisions between 2020-2024 (an average of 185 drivers involved annually)
- Of those involved 20% were aged 36-45 years, 18% were aged 46-55 years and 18% were aged 16-25 years.
- Of those involved 78% were male and 22% were female.

Age group of driver involved	Killed driver		Seriously injured driver		Minors injured driver		Not injured driver		Total	
	n	%	n	%	n	%	n	%	n	%
0-15	4	1%	1	1%	1	1%	0	0%	6	1%
16-25	66	21%	17	18%	31	22%	51	14%	165	18%
26-35	50	16%	20	22%	21	15%	61	16%	152	16%
36-45	54	17%	14	15%	33	23%	87	23%	188	20%
46-55	38	12%	17	18%	22	16%	91	24%	168	18%
56-65	24	8%	13	14%	16	11%	48	13%	101	11%
66-74	37	12%	9	10%	12	9%	20	5%	78	8%
75+	44	14%	1	1%	5	4%	13	3%	63	7%
Unknown	0	0%	0	0%	0	0%	2	1%	2	<1%
<b>Total</b>	<b>317</b>	<b>100%</b>	<b>92</b>	<b>100%</b>	<b>141</b>	<b>100%</b>	<b>373</b>	<b>100%</b>	<b>923</b>	<b>100%</b>

Note, figures are provisional and subject to change. Drivers involved in fatal collisions may have been fatally injured, seriously injured, minorly injured or not injured.



# All drivers involved in fatal collisions by licence type (n=923 drivers)



2020-2024

Of those 923 drivers involved in fatal collisions:

- 77% had a full licence
- 7% had a foreign licence
- 4% were a learner permit holder
- 5% had no licence

Licence type of driver involved	Total	% Total
Full licence	708	77%
Foreign licence	64	7%
Learner permit holder	34	4%
No licence	46	5%
Disqualified	14	2%
Novice	1	<1%
At present unknown*	56	6%
<b>Total</b>	<b>923</b>	<b>100%</b>

27 (3%) unaccompanied  
7 (1%) accompanied

\*'At present unknown' includes "Under Investigation", "Documents Demanded" and "After Investigation – Unknown"

Note, figures are provisional and subject to change. Drivers involved in fatal collisions may have been fatally injured, seriously injured, minorly injured or not injured. While some values in the table above are not actual licence categories, please note, the data is recorded in this way in the collision database.



# Drivers with learner permits involved in fatal collisions

2020-2024

# Profile of drivers with learner permits involved in fatal collisions (n=34)

## 2020-2024

- Not all drivers with learner permits involved in fatal collisions were fatally injured.
- Of those 34 drivers with learner permits involved, 35% (12) were fatally injured, 3% (1) seriously injured, and 24% (8) sustained a minor injury.
- 23 other road users were killed in collisions where a driver with a learner permit was driving.
- 27 of the 34 drivers with a learner permit were unaccompanied and 7 were accompanied at the time of the collision.
- 30 were driving a car, 2 were driving a van and 2 were driving an agricultural vehicle.

Injury of the drivers with learner permit	Total	% Total
Fatal	12	35%
Serious	1	3%
Minor	8	24%
Not Injured	13	38%
<b>Total</b>	<b>34</b>	<b>100%</b>

*Note, figures are provisional and subject to change. Learner drivers involved in fatal collisions may have been fatally injured, seriously injured, minorly injured or not injured. Please note, the fact that a learner driver was involved in a collision does not infer that the learner driver was at fault in contributing to the collision. The collision data does not contain information on culpability.*



# Age profile of drivers with learner permits involved in fatal collisions (n=34)



## 2020-2024

- Between 2020 and 2024, there were 34 drivers with a learner permit involved in fatal collisions.
- Of those drivers with learner permits, 21 were aged 16-25 years, 9 were aged 26-35 years and 4 were aged 36+ years.
- 27 were male and 7 were female.

Age group of driver with learner permits	Number of learner drivers	% Total
16-25	21	62%
26-35	9	26%
36+	4	12%
<b>Total</b>	<b>34</b>	<b>100%</b>

*Note, figures are provisional and subject to change. Learner drivers involved in fatal collisions may have been fatally injured, seriously injured, minorly injured or not injured.*



# All drivers involved in serious injury collisions

2020-2024

# Injury status of all drivers involved in serious injury collisions (n=7,501 drivers)



2020-2024

- There were 7,501 drivers involved in serious injury collisions between 2020-2024.
- Not all drivers involved in serious injury collisions were seriously injured.
- Of those 7,501 drivers involved, 32% (2,372) were seriously injured, 11% (848) sustained a minor injury and 57% (4,267) were not injured.

Injury of driver involved	2020		2021		2022		2023		2024		Total	
	n	%	n	%	n	%	n	%	n	%	n	%
<b>Serious</b>	372	31%	488	33%	547	31%	470	31%	495	32%	2372	32%
<b>Minor</b>	133	11%	148	10%	218	12%	175	12%	174	11%	848	11%
<b>Not Injured</b>	706	58%	854	57%	985	56%	854	57%	868	56%	4267	57%
<b>Unknown</b>	1	<1%	10	1%	1	<1%	1	<1%	1	<1%	14	<1%
<b>Total</b>	<b>1212</b>	<b>100%</b>	<b>1500</b>	<b>100%</b>	<b>1751</b>	<b>100%</b>	<b>1500</b>	<b>100%</b>	<b>1538</b>	<b>100%</b>	<b>7501</b>	<b>100%</b>

Note, figures are provisional and subject to change. Drivers involved in serious injury collisions may have been seriously injured, minorly injured or not injured.



# Age profile of all drivers involved in serious injury collisions (n=7,501 drivers)



## 2020-2024

- There were 7,501 drivers involved in serious injury collisions between 2020-2024 (an average of 1,500 drivers involved annually)
- Of those involved, 20% were aged 36-45 years, 19% were aged 16-25 years, 18%, were aged 26-35 years and 17% were aged 46-55 years.
- Of those involved 68% were male, 32% were female, and for <1% gender is unknown.

Age group of driver involved	Seriously injured		Minor injury		Not injured driver		Unknown injury to driver		Total	
	n	%	n	%	n	%	n	%	n	%
0-15	8	0%	1	0%	2	0%	0	0%	11	0%
16-25	477	20%	201	24%	712	17%	0	0%	1390	19%
26-35	434	18%	156	18%	780	18%	0	0%	1370	18%
36-45	413	17%	176	21%	884	21%	0	0%	1473	20%
46-55	352	15%	138	16%	812	19%	0	0%	1302	17%
56-65	289	12%	72	8%	539	13%	0	0%	900	12%
66-74	198	8%	54	6%	289	7%	0	0%	541	7%
75+	201	8%	50	6%	207	5%	0	0%	458	6%
Unknown	0	0%	0	0%	42	1%	14	100%	56	1%
<b>Total</b>	<b>2372</b>	<b>100%</b>	<b>848</b>	<b>100%</b>	<b>4267</b>	<b>100%</b>	<b>14</b>	<b>100.0%</b>	<b>7501</b>	<b>100%</b>

Note, figures are provisional and subject to change. Drivers involved in serious injury collisions may have been seriously injured, minorly injured or not injured.



# All drivers involved in serious injury collisions by licence type (n=7,501 drivers)



2020-2024

Of those 7,501 drivers involved in fatal collisions:

- 83% had a full licence
- 6% had a foreign licence
- 5% were a learner permit holder
- 3% had no licence

Licence Type of driver involved	Total	% Total
Full licence	6221	83%
Foreign licence	432	6%
Learner permit holder	391	5%
No licence	229	3%
Disqualified	45	1%
Novice licence	16	<1%
Exempt driver	9	<1%
At present unknown*	158	2%
<b>Total</b>	<b>7501</b>	<b>100%</b>

301 (4%) unaccompanied  
90 (1%) accompanied

\*'At present unknown' includes "Under Investigation", "Documents Demanded" and "After Investigation – Unknown"

Note, figures are provisional and subject to change. Drivers involved in serious injury collisions may have been seriously injured, minorly injured or not injured. While some values in the table above are not actual licence categories, please note, the data is recorded in this way in the collision database.



# Drivers with learner permits involved in serious injury collisions

2020-2024

# Profile of drivers with learner permits involved in serious injury collisions (n=391)

## 2020-2024

- Not all drivers with learner permits involved in serious injury collisions were seriously injured.
- Of those 391 drivers with learner permits, 34% (133) were seriously injured, 14% (54) sustained a minor injury and 52% (204) were not injured.
- 329 other road users were seriously injured in serious injury collisions where a driver with a learner permit was driving.
- 301 of the 391 drivers with a learner permit were unaccompanied and 90 were accompanied at the time of the collision.
- 366 were driving a car, 6 were driving an agricultural vehicle/tractor, 10 were driving a LGV, 2 were driving a HGV, and 7 driving other vehicle types.

Injury of the drivers with learner permits	Total	% Total
Serious	133	34%
Minor	54	14%
Not Injured	204	52%
<b>Total</b>	<b>391</b>	<b>100%</b>

*Note, figures are provisional and subject to change. Learner drivers involved in serious injury collisions may have been seriously injured, minorly injured or not injured.*



# Age profile of drivers with learner permits involved in serious injury collisions (n=391)



## 2020-2024

- Between 2020 and 2024, there were 391 drivers with a learner permit involved in serious injury collisions.
- Of those drivers with learner permits involved, 62% were aged 16-25 years and 20% were aged 26-35 years.
- Of those drivers with learner permits involved, 65% were male and 35% were female.

Age group of drivers with learner permits	Number of learner drivers	% Total
16-25	242	62%
26-35	79	20%
36-45	42	11%
46-55	14	4%
56-65	10	3%
66+	4	1%
<b>Total</b>	<b>391</b>	<b>100%</b>

*Note, figures are provisional and subject to change. Learner drivers involved in serious injury collisions may have been seriously injured, minorly injured or not injured.*





RSA

# Driver spotlight report: fatalities and serious injuries

2020-2024



VISION  
ZERO