



RSA

Serious injuries from single-cyclist collisions in Ireland

2019-2023

Summary report

Date of publication: 9 October 2025



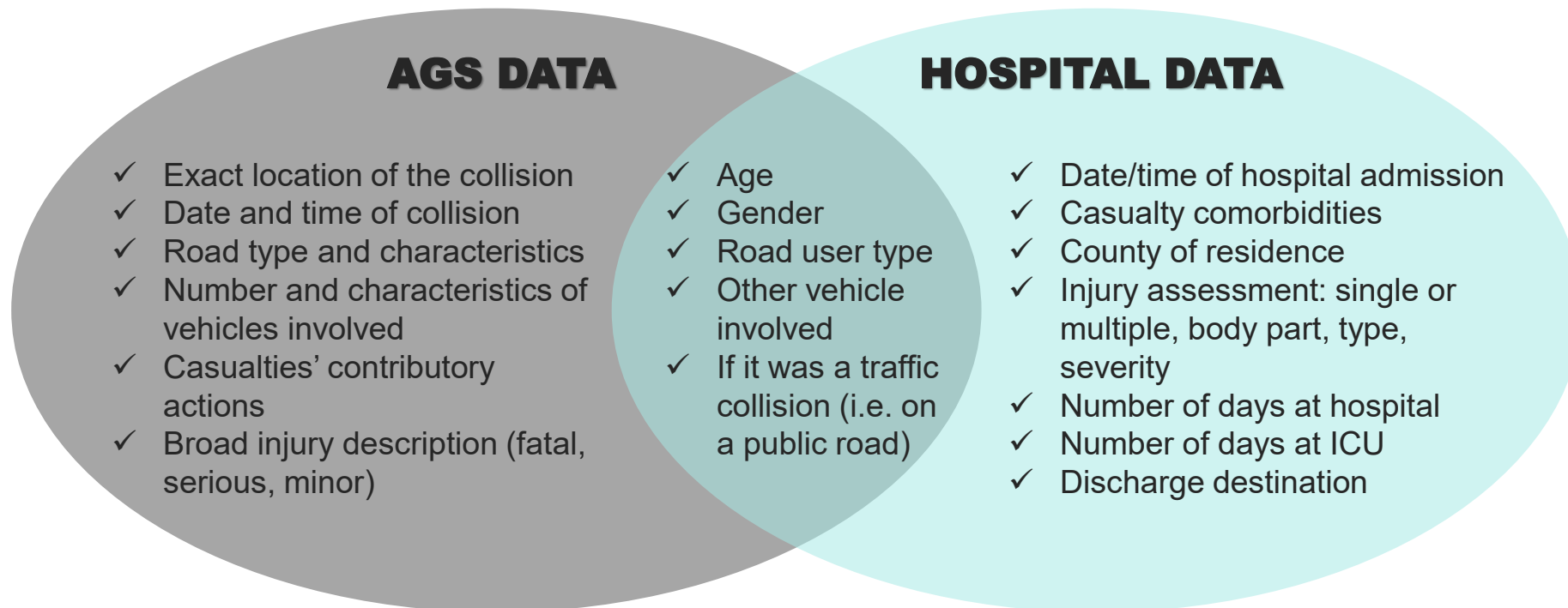
VISION
ZERO

Background

- This report summarises the key characteristics of cyclists injured in single-cyclist collisions in Ireland over the years 2019-2023.
- **The first section** of this report was prepared using data from the Irish Road Traffic Collision Database, which is based on collision records transferred from An Garda Síochána (AGS) to the RSA.
 - AGS information in this report is provisional and subject to change. This means that the serious injury statistics presented may change at a later date when new information becomes available.
- **The second section** of this report was prepared using data from the Hospital In-Patient Enquiry (HIPE) Database, which is based on hospital discharge information as recorded in Irish acute hospitals.
 - Hospital data include all casualties who were admitted to hospital as in-patients on an emergency basis, with at least one injury from a road traffic collision.
 - For more details on the methodology followed to process hospital data, please see [this report](#). You can also find FAQs on hospital data in this [link](#).

What type of information can we obtain from AGS and hospital data?

- Both data sources are complementary. AGS data describes the collision characteristics, and hospital data describes the casualty's health outcomes, including an accurate injury assessment.
- Some information can be found in both AGS and hospital data.



Definitions

AGS and hospital data

- In **AGS data**, a serious injury is one for which the person is detained in hospital as an in-patient, or any of the following injuries whether or not detained in hospital: fractures, concussions, internal injuries, crushing, severe cuts and lacerations, or severe general shock requiring medical treatment.

- In **hospital data**, we follow a medical definition of a serious injury, based on an international validated injury severity scoring scale, the Abbreviated Injury Scale (AIS)*.
 - The AIS scale allows to assign an injury severity score between 1 (minor) to 6 (critical) to each hospitalised casualty. A casualty may have one or more injuries recorded in their hospital chart. We first assign an AIS score to each injury, and then determine the maximum AIS score assigned to each casualty.
 - **Casualties with clinically moderate injuries** are those with a maximum AIS score of 2 or less (MAIS2-).
 - **Casualties with clinically serious injuries** are those with at least one injury with a maximum AIS score of 3 or more (MAIS3+).
 - We add the number of casualties having MAIS3+ and MAIS2- scores to obtain the total number of **hospitalised casualties**.

*Association for the Advancement of Automotive Medicine (2016). Abbreviated Injury Scale (c) 2005 Update 2008. (T. Gennarelli, & e. Woodzin, Eds.) Chicago, Illinois.



Definitions

Single-cyclist collisions

- A single cyclist collision (SCC) is a crash including one moving vehicle (the bike).
- Frequent scenarios for SCCs according to AGS data (2018-2022) were:
 - an interaction of the bike with the road surface (i.e. oil, debris, potholes, wet surface),
 - the loss of control of the bike,
 - a collision with a kerb/footpath,
 - or avoidance of another vehicle.



VISION
ZERO

RSA

Section one

Serious injuries from
single-cyclist collisions as
recorded in AGS data,
focused on collision
characteristics

(2019-2023)

Serious injuries from single-cyclist collisions in An Garda Síochána (AGS) data*

Over 2019-2023, AGS recorded 246 serious injuries among cyclists following a single-cyclist collision. The absolute number of serious injuries from single-cyclist collisions was the highest in 2022 (61).

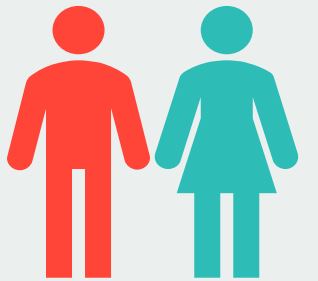


VISION ZERO



CHARACTERISTICS OF SINGLE-CYCLIST COLLISIONS IN IRELAND (SOURCE: AGS DATA)

37% AGED 45-64 YEARS



82% MALES 18% FEMALES



35% OF SERIOUS INJURIES OCCURRED IN COUNTY DUBLIN



SINGLE-CYCLIST COLLISIONS ACCOUNTED FOR 17% OF ALL CYCLIST SERIOUS INJURIES

- 88% OF THESE CYCLISTS WERE DRIVING FORWARD

MOST FREQUENT COLLISION SCENARIOS AMONG CYCLISTS IN SINGLE-CYCLIST COLLISIONS:

- INTERACTION WITH THE ROAD SURFACE
- LOSS OF CONTROL OF THE BIKE
- INTERACTION WITH A KERB / FOOTPATH
- AVOIDANCE OF ANOTHER VEHICLE

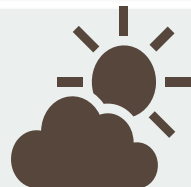


37% OCCURRED BETWEEN JUN-AUG

19% OCCURRED ON A SUNDAY

30% OCCURRED BETWEEN 12PM-4PM

79% OCCURRED IN DAYTIME



71% OCCURRED ON AN URBAN ROAD



80% OCCURRED ON A STRAIGHT ROAD

22% OCCURRED AT A JUNCTION



* AGS data is current as of 31 July 2025. Figures for 2021 onwards are provisional and subject to change.



VISION ZERO

Section two

Hospitalised cyclists from single-cyclist collisions as recorded in hospital data, focused on health outcomes.

(2019-2023)

Serious injuries from single-cyclists collisions in hospital data

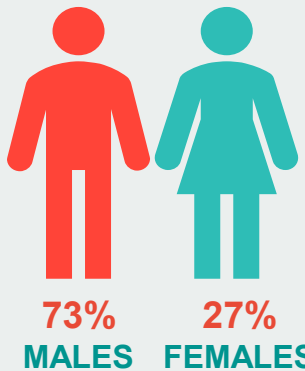
Over 2019-2023, 2,341 cyclists were admitted to a hospital in Ireland following a single-cyclist collision. These are between 9 and 10 hospitalised casualties for each single-cyclist collision recorded by AGS (246). The number of single-cyclist collisions increased over the last decade, from 155 in 2014 to 407 in 2023.

VISION
ZERO

RSA

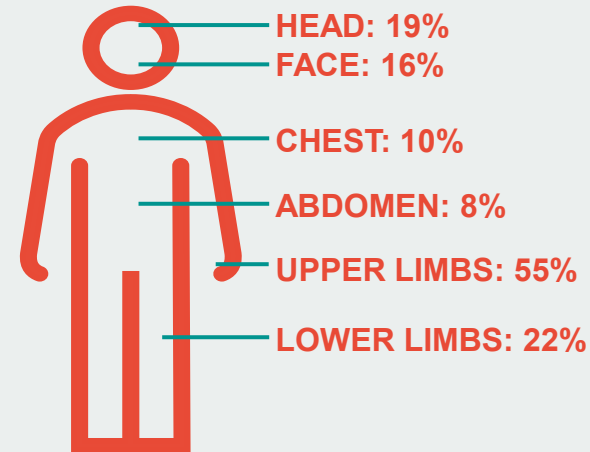
CHARACTERISTICS OF HOSPITALISED CYCLISTS FROM SINGLE-CYCLIST COLLISIONS IN IRELAND (SOURCE: HOSPITAL DATA)

18% AGED
14 YEARS OR LESS



40%
COUNTY
DUBLIN
RESIDENTS

THEY SUSTAINED AT LEAST ONE INJURY IN THE
FOLLOWING BODY AREAS:



SINGLE-CYCLIST COLLISIONS ACCOUNTED
FOR 69% OF ALL HOSPITALISED CYCLISTS



37% ADMITTED TO HOSPITAL OVER SUMMER

47% ADMITTED TO HOSPITAL SATURDAY,
SUNDAY, OR MONDAY



THEY SPENT 3 DAYS AT HOSPITAL AS IN-PATIENTS

93% SENT HOME AT DISCHARGE FROM HOSPITAL



17% SUSTAINED CLINICALLY SERIOUS INJURIES

RSA

VISION
ZERO



* If you have further questions on serious injuries in hospital data, please visit our FAQs in this [link](#).

Clinically serious injuries from single-cyclist collisions in hospital data

Of all hospitalised cyclists from single-cyclist collisions over 2019-2023, 401 (17%) sustained clinically serious injuries, with a higher probability of having long-term consequences on the casualty's life. To determine injury severity in hospital data, we use an internationally validated injury severity scale, the Abbreviated injury Scale (AIS)*.

Clinically moderate injuries

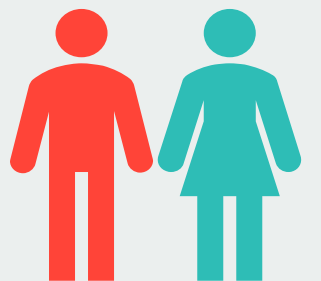
1940

Clinically serious injuries

401

CHARACTERISTICS OF CYCLISTS WITH CLINICALLY SERIOUS INJURIES FROM SINGLE-CYCLIST COLLISIONS

21% AGED
55-64 YEARS

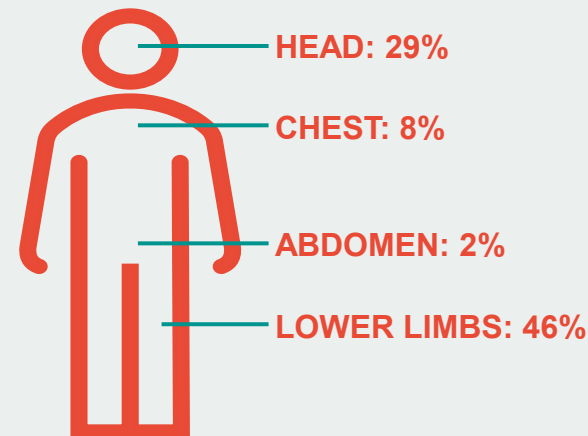


83% MALES
17% FEMALES



41%
COUNTY
DUBLIN
RESIDENTS

THE MAJORITY SUSTAINED A SINGLE SERIOUS INJURY:



11% SUSTAINED MULTIPLE SERIOUS INJURIES IN THE SAME OR DIFFERENT BODY PARTS



SINGLE-CYCLIST COLLISIONS ACCOUNTED FOR 64% OF CYCLISTS WITH CLINICALLY SERIOUS INJURIES



33% ADMITTED TO HOSPITAL OVER SUMMER

38% ADMITTED TO HOSPITAL SATURDAY OR SUNDAY



THEY SPENT 7 DAYS AT HOSPITAL AS IN-PATIENTS



13% WERE SENT TO ANOTHER HOSPITAL FOR CONTINUED CARE

83% SENT HOME AT DISCHARGE FROM HOSPITAL



* If you have further questions on serious injuries in hospital data, please visit our FAQs in this [link](#).



Serious injuries from single-cyclist collisions in Ireland