

# Provisional Review of Fatal Collisions

January to 31 December 2021

*\*Data is current as of 23 January 2022*

*Note: All data for 2020 and 2021 are provisional and subject to change*



# Overview



- As of 31 December 2021, there have been **123** fatal collisions, which have resulted in **136** fatalities on Irish roads.
- This represents **12 less** fatal collisions and **10 less** deaths (**-7%**) compared to provisional Garda data for 2020.



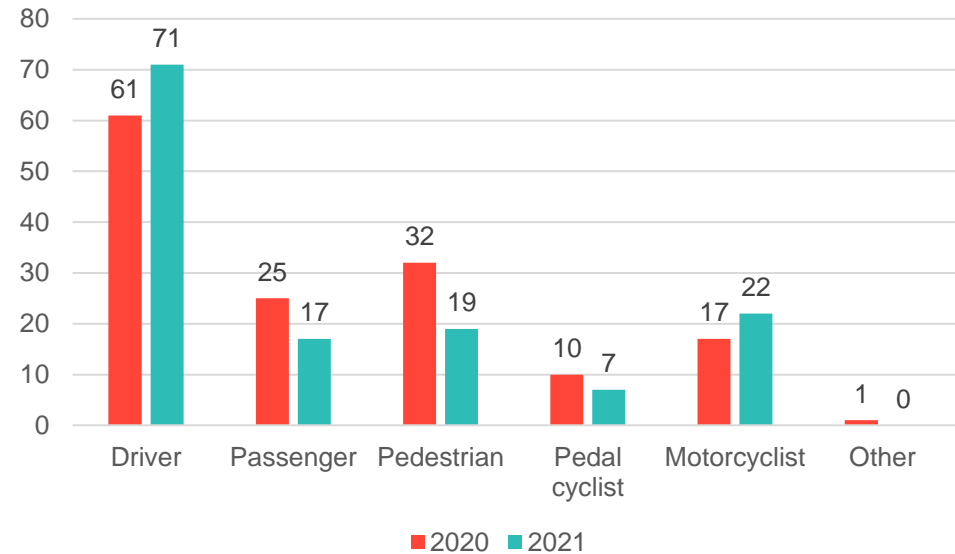
*Note: All data for 2020 and 2021 are provisional and subject to change.*



# Road User Type



- **Driver** and **passenger** fatalities represent almost two thirds of fatalities (**65%**) in 2021, compared to 59% in 2020.
- There has been an increase in the number of **drivers (+10)**, and **motorcyclists (+5)** fatalities in 2021 compared to 2020.
- A decrease in fatalities has been seen among **passengers (-8)**, **pedestrians (-13)**, and **cyclists (-3)**.
- Of fatalities, **24%** occurred on an **urban road\*** and **76%** occurred on a **rural road\***. For **2020**, these proportions were **28%** and **72%** respectively.



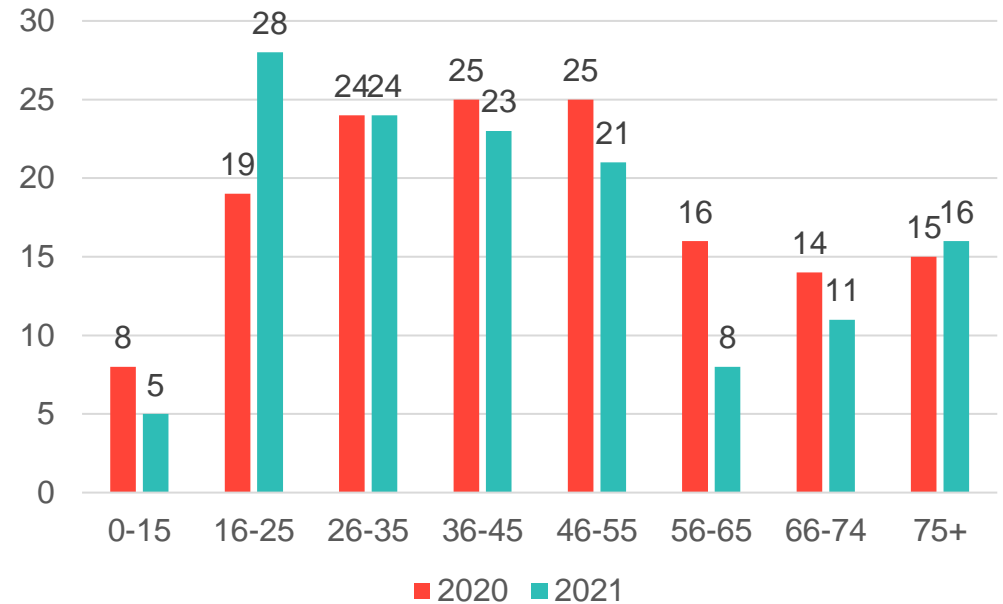
**Seatbelts:** Of the 88 drivers and passengers killed in seatbelt-equipped motor vehicles in 2021, 38 (43%) were wearing a seatbelt at the time of the collision; 24 (27%) were not wearing a seatbelt; and for the remaining 26 fatalities, it was not yet known (30%).

*Note: All data for 2020 and 2021 are provisional and subject to change. \*An urban road has a speed limit of 60km/h or less while a rural road has a speed limit of 80km/h or greater*

# Age group



- In 2021, the highest risk age group was those aged **16-25 years** with **28 fatalities (21%)**. This age group represented **13%** of fatalities in **2020**.
- Over half of fatalities (**75**) were aged **between 16 and 45 years (55%)**
- Compared to 2020, there were **increases in fatalities** in the **16-25 age group (+9)** and the **75+ years age group (+1)**. Figures for the 26-35 age group remained the same.
- **All remaining age groups** saw **decreases** in 2021 compared to 2020.
- Of fatalities, **74% (100)** were **male** and **26% (36)** were **female**.

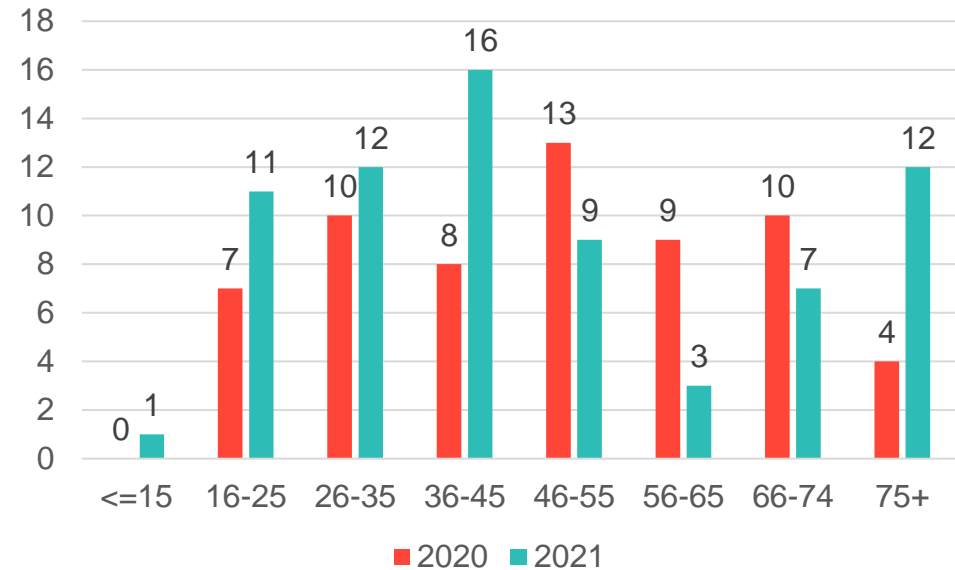


*Note: All data for 2020 and 2021 are provisional and subject to change.*

# Driver Fatalities



- **Driver** fatalities represent over half of fatalities (**52%**) in 2021.
- There has been an increase in the number of **driver (+10)** fatalities in 2021 compared to 2020.
- Of the **71 driver fatalities**, **16** were **aged 36-45 years**, **12** were **aged 26-35 years** and **12** were **aged 75+ years**.
- A high number of **driver fatalities (51)** were **male**.
- Of driver fatalities, **17%** occurred on an **urban road\*** and **83%** occurred on a **rural road\***.



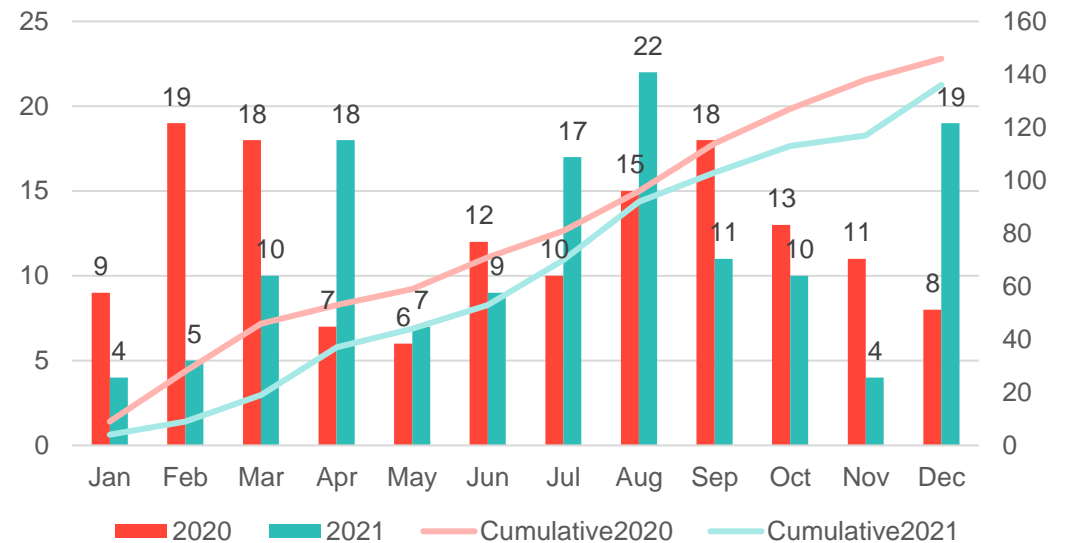
*Note: All data for 2020 and 2021 are provisional and subject to change. \*An urban road has a speed limit of 60km/h or less while a rural road has a speed limit of 80km/h or greater*



# Month of Year



- **January (4), February (5) and November (4)** had the lowest number of fatalities in 2021.
- **August (22), December (19), April (18), and July (17)** had the highest number of fatalities.
- The average number of deaths per month in 2020 was **12 deaths** while the monthly average in 2021 was **11 deaths per month**.

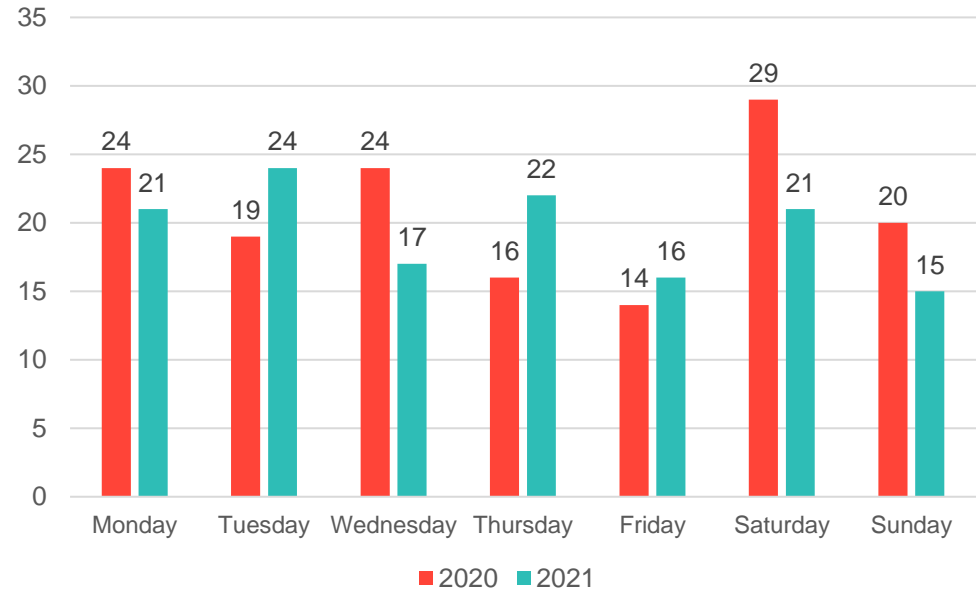


*Note: All data for 2020 and 2021 are provisional and subject to change.*

# Day of the Week



- **Tuesday (24)** was the most dangerous day in 2021, followed by **Thursday (22)**, **Monday (21)**, and **Saturday (21)**.
- **A third (33%)** of fatalities occurred **between Monday and Tuesday** in 2021.
- Compared to 2020, **3 more fatalities occurred between Monday and Friday**.
- Compared to 2020, **13 less fatalities occurred between Saturday and Sunday**.



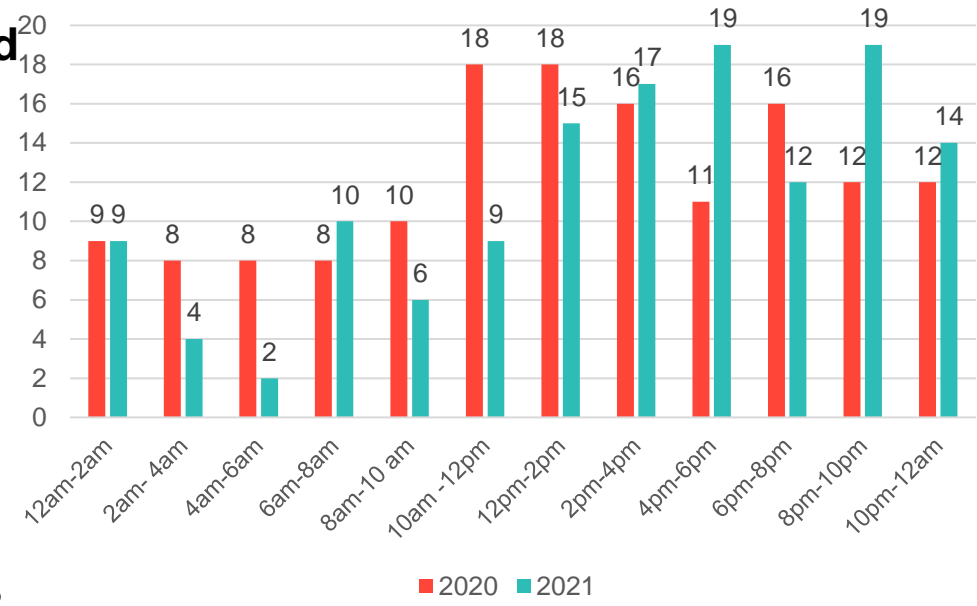
*Note: All data for 2020 and 2021 are provisional and subject to change.*



# Time of day



- **71% (96)** of fatalities occurred between **12pm and midnight**, compared to **58% (85)** in 2020.
- Of the **96** fatalities, **73 (76%)** occurred on a weekday (Monday-Friday).
- There were **40** fatalities between **midnight and 12pm (30%)**, compared to **61 (42%)** in 2020.
- Of the **40** fatalities, **13** occurred on **Saturdays and Sundays**, while **27** occurred on weekdays.



Note: All data for 2020 and 2021 are provisional and subject to change.





# 136 road deaths

## Up to 31 December 2021

### Down 10 on last year



**VISION  
ZERO**  
NO ROAD DEATHS  
OR SERIOUS INJURIES BY 2050

Please note: all figures are provisional and subject to change.



# Fatalities Summary 2021



## TO DATE IN 2021

there have been  
**136 fatalities** in  
**123 fatal**  
**collisions**



## DECREASE OF 7%

in fatalities  
compared to  
**2020**  
**12 less** fatal  
collisions and **10**  
**less** fatalities



## DEATHS HAVE INCREASED

Among  
**Drivers: 71 (+10)**  
and  
**Motorcyclists: 22 (+5)**  
& deaths have  
decreased among  
**Passengers: 17 (-8)**  
**Pedestrians: 19 (-13)**  
**Pedal cyclists: 7 (-3)**



## DUBLIN (21), MEATH (14), GALWAY (12), and TIPPERARY (11)

had the highest  
number of  
fatalities (**43% of**  
**total**)



## AUGUST (22)

was the month with  
the highest number  
of fatalities

*Note: All data for 2020 and 2021 are provisional and subject to change.*