

RSA



# SAFETY IN IRISH CITIES 1997-2006

An tÚdarás Um Shábháilteacht Ar Bhóithre  
Road Safety Authority

# Pattern of Road Collisions in Different Cities in the Republic of Ireland

## Overview

Most of the cities and urban areas in Ireland are witnessing increasing growth of vehicle traffic due to an increasing population, coupled with economic growth levels in Ireland over the last ten years. This has resulted in road traffic problems and deterioration in environment due to an increase in carbon emission. Five major cities namely Dublin, Cork, Waterford, Limerick and Galway have been considered for detailed analysis of road collisions for the period of ten years (i.e. 1997-2006).

Despite an increase in population, along with a steady growth in the motor vehicles population and number of driver licence holders (both full and provisional), the number of fatalities in our five cities is generally declining since 1997.

Over a period of ten years (1997-2006), there have been 374 road traffic fatalities and 1508 serious injures in the five main cities in Ireland (i.e. Dublin city, Cork city, Waterford city, Limerick city and Galway city). Just under half of the people killed in the cities were pedestrians. Thirty-six per cent of pedestrians killed in our cities were 65 year olds and over. Twenty-two per cent of the people killed were car users and 16 per cent were motorcyclists. Twenty-one per cent of the people killed were aged 65 and over, 40 per cent were 18-34 year olds.

## Other Key Facts

Since 1997 there has been:

- 68% reduction in fatalities in Dublin city,  
73% reduction in killed and seriously injured in Dublin City.
- Pedestrian fatalities in Dublin city have reduced by 77%.
- 69.7% reduction in killed and seriously injured in Cork City.
- No significant reduction in fatalities in Cork City.
- 77.8% reduction in killed and seriously injured in Waterford City.
- 41% reduction in killed and seriously injured in Limerick City.
- 66.7% reduction in killed and seriously injured in Galway City.
- Deaths per million population for cities like Galway, Limerick and Dublin have improved

## Collisions

A total of 16,459 collisions occurred in the five cities over the period 1997-2006, where at least one person was either killed or injured. Dublin city recorded the highest number of collisions followed by Cork city. Using a maximum of two vehicles per collision, 39 per cent of vehicles involved in fatal collisions in Dublin city were cars, 22 per cent were goods vehicles and 16 per cent were motorcycles. Sixty-one per cent of vehicles involved in fatal collisions in Cork city were cars.

**Table 1: Road collisions by metropolitan cities, 1997-2006**

Metropolitan Areas	Fatal	Injury	Total Collisions
Dublin City	233	11376	11609
Cork City	46	2217	2263
Waterford City	13	700	713
Limerick City	29	1259	1288
Galway City	26	560	586
<b>Total</b>	<b>347</b>	<b>16112</b>	<b>16459</b>

**Table 2: Vehicles involved in Fatal or Injury Collisions in the cities, 1997-2006**

Metropolitan Areas	Vehicle Type	Fatal	Injury	Total
Dublin City	Pedal Cycle	33	1584	1617
	Motor Cycle	50	2699	2749
	Car	121	12057	12178
	PSV	22	565	587
	Goods Vehicle	69	1600	1669
	Other	15	344	359
	<b>Total</b>		<b>310</b>	<b>18849</b>
Cork City	Pedal Cycle	2	96	98
	Motor Cycle	6	498	504
	Car	33	2631	2664
	PSV	1	44	45
	Goods Vehicle	10	301	311

	Other	2	61	63
	Total	54	3631	3685
<b>Waterford City</b>	Pedal Cycle	1	51	52
	Motor Cycle	2	186	188
	Car	9	793	802
	PSV	0	7	7
	Goods Vehicle	5	81	86
	Other	0	24	24
	Total	17	1142	1159
<b>Limerick City</b>	Pedal Cycle	0	100	100
	Motor Cycle	4	219	223
	Car	20	1535	1555
	PSV	0	22	22
	Goods Vehicle	7	185	192
	Other	3	31	34
	Total	34	2092	2126
<b>Galway City</b>	Pedal Cycle	0	73	73
	Motor Cycle	3	86	89
	Car	23	657	680
	PSV	1	13	14
	Goods Vehicle	5	74	79
	Other	0	14	14
	Total	32	917	949

Table contains information relating to a maximum of two vehicles per collision.

## Casualties

Over a period of ten years (1997-2006), there have been 374 road traffic fatalities and 1508 serious injures in the five main cities in Ireland (i.e. Dublin city, Cork city, Waterford city, Limerick city and Galway city).

Just under half of the people killed in the cities were pedestrians. Twenty-two per cent of the people killed were car users and sixteen per cent were motorcyclists. Twenty-one per cent of the people killed were aged 65 year olds and over, forty per cent were 18-34 year olds.

Thirty-six per cent of pedestrians killed in our cities were 65 year olds and over.

**Table 3: Road fatalities by city and road user, 1997-2006**

Road Users	Dublin City	Cork City	Waterford City	Limerick City	Galway City	Total	%
<b>Pedestrian</b>	124	26	5	16	12	183	49
<b>Pedal Cycle Users</b>	31	2	1	0	0	34	9
<b>Motor Cycle Users</b>	46	5	3	4	3	61	16
<b>Car Users</b>	44	13	5	10	11	83	22
<b>PSV Users</b>	1	0	0	0	0	1	0
<b>Goods Vehicle Users</b>	2	1	0	0	1	4	1
<b>Other or Unknown</b>	3	3	0	1	1	8	2
<b>Total</b>	251	50	14	31	28	374	100

**Table 4: Drivers involved in fatal and injury collisions in the cities classified by vehicle type, 1997-2006**

City	Gender of Driver	Casualty Type of Driver	Severity			
			Killed	Injured	Uninjured	Total
<b>Dublin City</b>	Male	Pedal Cycle	24	1055	50	1129
		Motor Cycle	35	2000	283	2318
		Car	18	2005	5090	7113
		PSV User	0	43	413	456
		Goods Vehicle User	1	222	1161	1384
		Other	0	63	181	244
	Total	78	5388	7178	12644	
	Female	Pedal Cycle	7	355	2	364
		Motor Cycle	3	166	12	181
		Car	3	1359	2037	3399
		PSV User	0	5	13	18
		Goods Vehicle User	0	10	28	38
		Other	0	6	11	17
Total		13	1901	2103	4017	
<b>Cork City</b>	Male	Pedal Cycle	2	69	0	71

		Motor Cycle	4	381	30	415
		Car	6	451	1068	1525
		PSV User	0	5	27	32
		Goods Vehicle User	0	59	196	255
		Other	0	9	39	48
		Total	12	974	1360	2346
	Female	Pedal Cycle	0	21	0	21
		Motor Cycle	0	46	7	53
		Car	1	356	479	836
		PSV User	0	2	1	3
		Goods Vehicle User	0	5	6	11
		Other	0	1	0	1
		Total	1	431	493	925
<b>Waterford City</b>	Male	Pedal Cycle	1	42	0	43
		Motor Cycle	2	138	15	155
		Car	1	122	304	427
		PSV User	0	0	7	7
		Goods Vehicle User	0	8	60	68
		Other	0	2	14	16
		Total	4	312	400	716
	Female	Pedal Cycle	0	4	0	4
		Motor Cycle	0	13	1	14
		Car	1	116	167	284
		Goods Vehicle User	0	4	4	8
		Other	0	0	2	2
		Total	1	137	174	312
<b>Limerick City</b>	Male	Pedal Cycle	0	69	1	70
		Motor Cycle	3	180	17	200
		Car	5	273	608	886
		PSV User	0	2	15	17
		Goods Vehicle User	0	25	143	168
		Other	1	4	16	21
		Total	9	553	800	1362
	Female	Pedal Cycle		23	0	23
		Motor Cycle		6	2	8
		Car		217	254	471
		Goods Vehicle User		3	4	7

		Other		0	2	2	
		Total		249	262	511	
<b>Galway City</b>	Male	Pedal Cycle	0	40	2	42	
		Motor Cycle	1	71	4	76	
		Car	4	122	239	365	
		PSV User	0	0	13	13	
		Goods Vehicle User	1	15	47	63	
		Other	0	2	7	9	
			Total	6	250	312	568
		Female	Pedal Cycle	0	22	0	22
			Motor Cycle	0	2	0	2
			Car	1	104	128	233
			Goods Vehicle User	0	4	2	6
			Other	0	0	1	1
				Total	1	132	131

**Table 5: Pedestrian casualties in the cities classified by pedestrian action, age and by darkness and daylight, 1997-2006.**

Lighting	Pedestrian Age	Pedestrian Action	Severity			
			Killed	Injured	Total	
<b>Daylight</b>	0-14	Crossing marked by Parked Car	2	161	163	
		Otherwise crossing	2	227	229	
		Walking with traffic	0	7	7	
		Walking against traffic	0	14	14	
		Standing in roadway	0	16	16	
		Playing in roadway	6	111	117	
		Lying in roadway	0	5	5	
		Other	3	101	104	
		Unknown	1	70	71	
		Total	14	712	726	
		15-64	Crossing marked by Parked Car	1	138	139
			Otherwise crossing	16	560	576
			Walking with traffic	2	42	44
			Walking against traffic	2	51	53
	Standing in roadway		1	104	105	
	Playing in roadway		0	8	8	
		Lying in roadway	0	2	2	
		Other	5	197	202	

		Unknown	4	113	117
		Total	31	1215	1246
	65 & over	Crossing marked by Parked Car	5	28	33
		Otherwise crossing	26	154	180
		Walking with traffic	2	12	14
		Walking against traffic	2	10	12
		Standing in roadway	1	14	15
		Other	4	39	43
		Unknown	2	31	33
		Total	42	288	330
<b>Darkness</b>	0-14	Crossing marked by Parked Car	0	38	38
		Otherwise crossing	2	79	81
		Walking against traffic	0	3	3
		Standing in roadway	0	8	8
		Playing in roadway	0	32	32
		Lying in roadway	0	2	2
		Other	0	33	33
		Unknown	0	10	10
		Total	2	205	207
	15-64	Crossing marked by Parked Car	1	99	100
		Otherwise crossing	20	528	548
		Walking with traffic	3	37	40
		Walking against traffic	2	46	48
		Standing in roadway	9	106	115
		Playing in roadway	0	13	13
		Lying in roadway	4	7	11
		Other	4	186	190
		Unknown	3	88	91
		Total	46	1110	1156
	65 & over	Crossing marked by Parked Car	1	14	15
		Otherwise crossing	17	66	83
		Walking against traffic	2	3	5
		Standing in roadway	1	4	5
		Other	3	11	14
		Unknown	0	5	5
		Total	24	103	127



**Table 6: Road fatalities by city and age group, 1997-2006**

Age group	Dublin City	Cork City	Waterford City	Limerick City	Galway City	Total	%
<b>0-5</b>	3	1	0	2	0	6	2
<b>6-9</b>	5	1	0	0	0	6	2
<b>10-14</b>	4	3	0	0	0	7	2
<b>15-17</b>	9	4	1	1	2	17	5
<b>18-20</b>	18	7	3	3	5	36	10
<b>21-24</b>	24	4	2	3	4	37	10
<b>25-34</b>	52	8	2	8	3	73	20
<b>35-44</b>	19	5	0	2	5	31	8
<b>45-54</b>	14	3	1	1	2	21	6
<b>55-64</b>	22	1	1	2	3	29	8
<b>65 +</b>	52	12	3	7	3	77	21
<b>Unknown</b>	29	1	1	2	1	34	9
<b>Total</b>	251	50	14	31	28	374	100

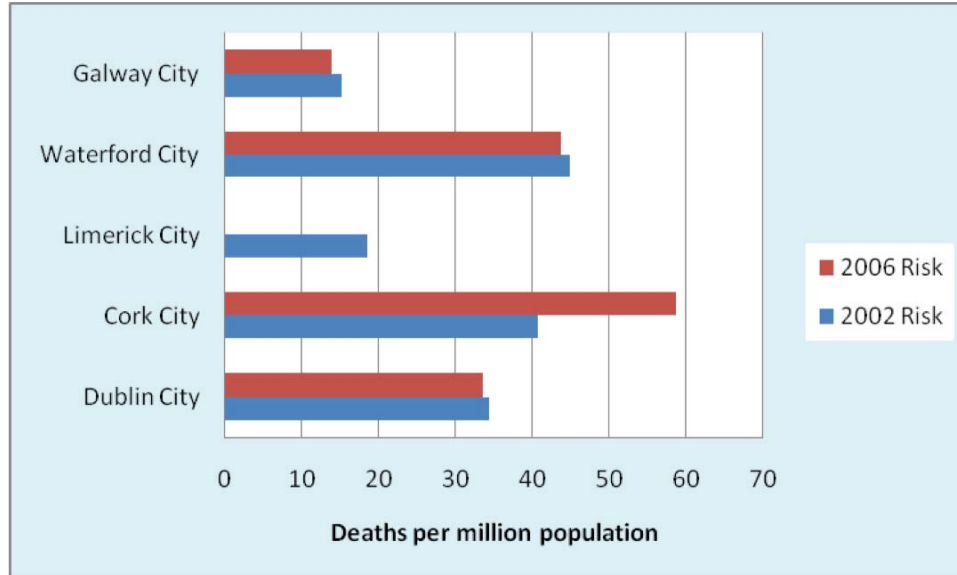
**Table 7: Road Injuries by city and age group, 1997-2006**

Age group	Dublin City	Cork City	Waterford City	Limerick City	Galway City	Total	%
<b>0-5</b>	262	76	21	43	12	414	2
<b>6-9</b>	330	86	21	51	14	502	2
<b>10-14</b>	453	119	31	64	28	695	3
<b>15-17</b>	417	160	59	92	31	759	4
<b>18-20</b>	1062	349	110	177	91	1789	8
<b>21-24</b>	1332	364	106	201	110	2113	10
<b>25-34</b>	3296	547	160	329	159	4491	21
<b>35-44</b>	1610	330	98	187	74	2299	11
<b>45-54</b>	995	252	67	144	73	1531	7
<b>55-64</b>	528	155	36	68	46	833	4
<b>65 +</b>	516	141	54	73	29	813	4
<b>Unknown</b>	3861	428	147	301	104	4841	23
<b>Total</b>	14662	3007	910	1730	771	21080	100

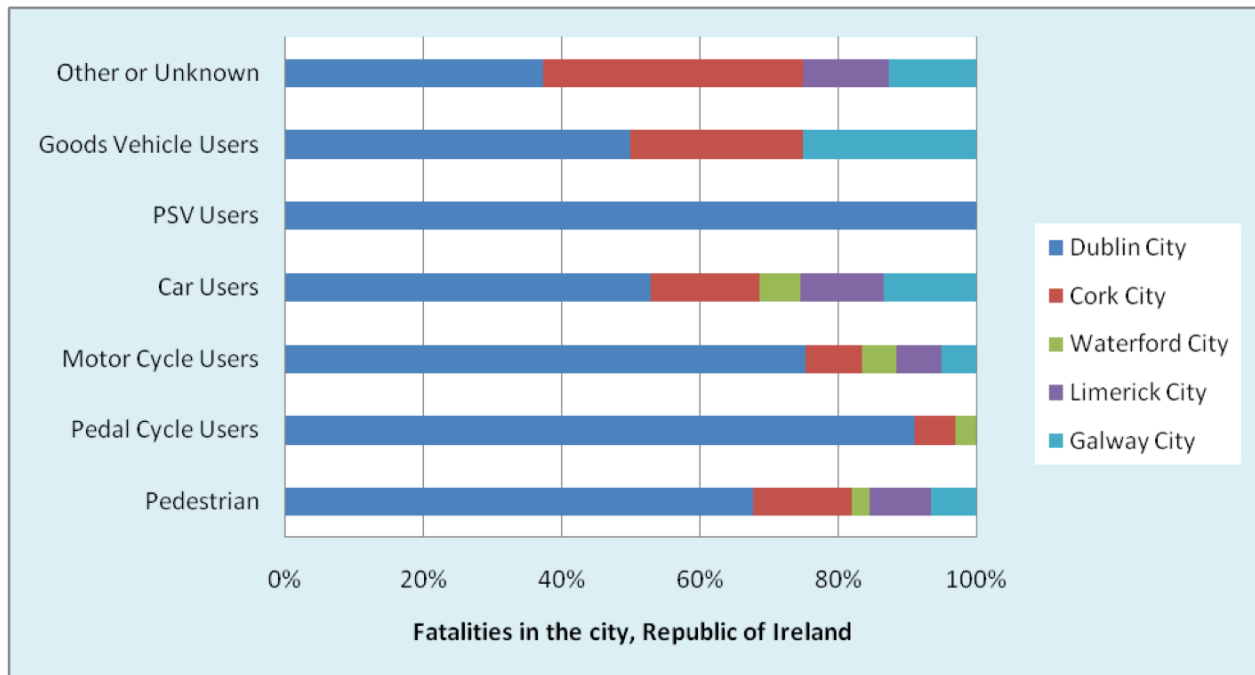
**Table 8: Killed & seriously injured by road user and city, 1997-2006**

Road Users	Dublin City	Cork City	Waterford City	Limerick City	Galway City	Total	%
<b>Pedestrian</b>	554	110	30	45	25	764	41
<b>Pedal Cycle Users</b>	111	6	7	7	10	141	7
<b>Motor Cycle Users</b>	244	61	18	17	34	374	20
<b>Car Users</b>	307	123	26	45	40	541	29
<b>PSV Users</b>	8	0	0	0	0	8	0
<b>Goods Vehicle Users</b>	21	6	2	2	1	32	2
<b>Other or Unknown</b>	16	3	1	1	1	22	1
<b>Total</b>	1261	309	84	117	111	1882	100

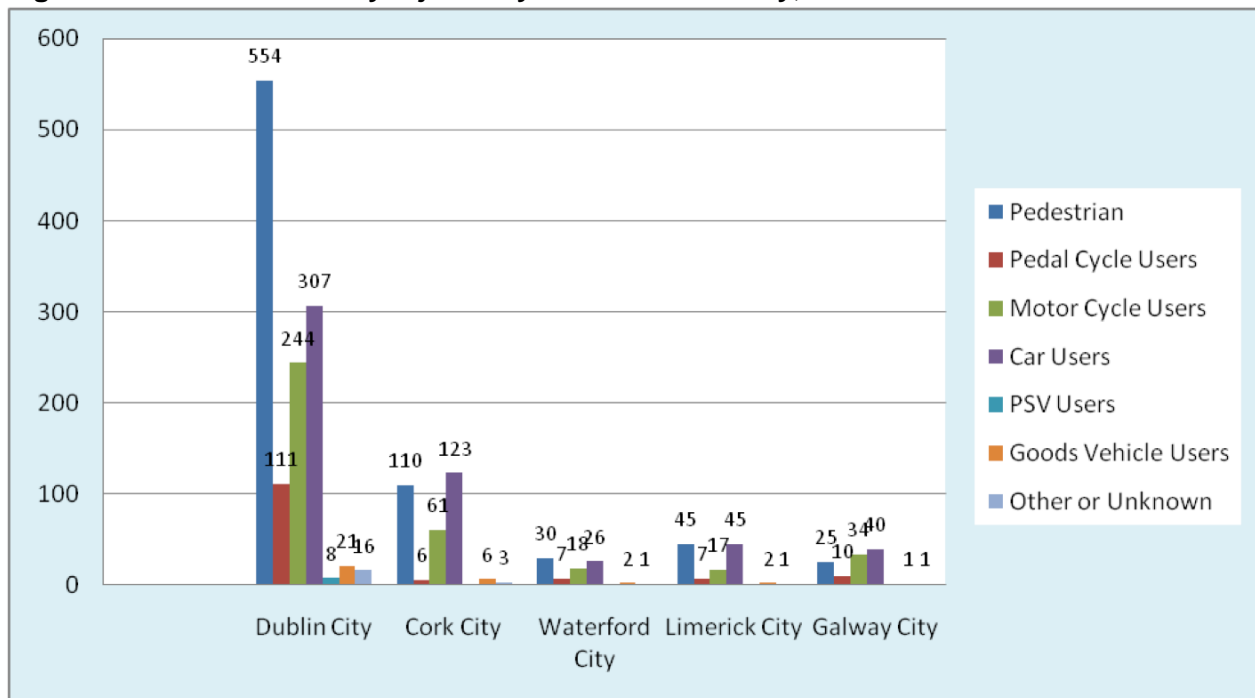
**Figure 1: Road fatality risk in the cities, 2002-2006**



**Figure 2: Road fatalities by road user and city, 1997-2006**



**Figure 3: Killed & seriously injured by road user and city, 1997-2006**



## When Fatalities and Injuries Occur in Cities

Twenty-one per cent of fatalities in the five cities occurred during the hours of 16:00 and 21:00 over the period 1997-2006. Thirty-one per cent of the fatalities in the five cities occurred during the weekend.

**Table 9: Road fatalities by hour of the day and city, 1997-2006**

Hour Beginning	Dublin City	Cork City	Waterford City	Limerick City	Galway City	Total	%
<b>12 Midnight</b>	15	4	0	2	3	24	6
<b>1</b>	13	2	1	0	2	18	5
<b>2</b>	3	4	0	3	2	12	3
<b>3</b>	16	1	0	3	2	22	6
<b>4</b>	6	3	0	2	2	13	3
<b>5</b>	10	0	0	2	1	13	3
<b>6</b>	5	0	0	0	0	5	1
<b>7</b>	12	1	0	0	1	14	4
<b>8</b>	10	0	0	1	3	14	4
<b>9</b>	7	1	1	0	1	10	3
<b>10</b>	7	1	1	0	1	10	3
<b>11</b>	13	2	0	0	0	15	4
<b>12</b>	22	2	1	1	0	26	7
<b>13</b>	15	3	0	2	1	21	6
<b>14</b>	3	0	3	1	0	7	2
<b>15</b>	14	4	0	3	1	22	6
<b>16</b>	16	4	0	0	0	20	5
<b>17</b>	14	2	1	1	1	19	5
<b>18</b>	9	2	0	1	1	13	3
<b>19</b>	4	4	1	0	2	11	3
<b>20</b>	14	4	0	1	1	20	5
<b>21</b>	9	2	2	3	0	16	4
<b>22</b>	5	3	3	2	1	14	4
<b>23</b>	6	1	0	3	2	12	3
<b>Unknown</b>	3	0	0	0	0	3	1
<b>Total</b>	251	50	14	31	28	374	100

**Table 10: Road fatalities by day of the week and city, 1997-2006**

Day of Week	Dublin City	Cork City	Waterford City	Limerick City	Galway City	Total	%
Sunday	31	4	3	6	4	48	13
Monday	35	9	1	3	5	53	14
Tuesday	31	5	3	4	1	44	12
Wednesday	37	7	1	2	4	51	14
Thursday	36	7	0	9	2	54	14
Friday	34	10	3	3	4	54	14
Saturday	45	8	3	4	8	68	18
Unknown	2	0	0	0	0	2	1
<b>Total</b>	<b>251</b>	<b>50</b>	<b>14</b>	<b>31</b>	<b>28</b>	<b>374</b>	<b>100</b>

**Table 11: Road fatalities by month of the year and city, 1997-2006**

Month	Dublin City	Cork City	Waterford City	Limerick City	Galway City	Total	%
January	30	0	2	2	1	35	9
February	16	7	0	4	2	29	8
March	17	9	0	3	8	37	10
April	18	5	3	3	2	31	8
May	32	4	2	2	1	41	11
June	15	3	0	2	3	23	6
July	17	6	0	2	0	25	7
August	16	1	0	2	0	19	5
September	21	5	2	3	1	32	9
October	22	5	4	2	0	33	9
November	18	2	1	3	2	26	7
December	27	3	0	3	8	41	11
Unknown	2	0	0	0	0	2	1
<b>Total</b>	<b>251</b>	<b>50</b>	<b>14</b>	<b>31</b>	<b>28</b>	<b>374</b>	<b>100</b>

**Table 12: Injuries by hour of the day and city, 1997-2006**

<b>Hour</b>	<b>Dublin City</b>	<b>Cork City</b>	<b>Waterford City</b>	<b>Limerick City</b>	<b>Galway City</b>	<b>Total</b>	<b>%</b>
<b>12 Midnight</b>	444	120	27	74	59	724	3
<b>1</b>	415	80	25	74	19	613	3
<b>2</b>	330	106	20	47	12	515	2
<b>3</b>	313	66	17	49	30	475	2
<b>4</b>	212	31	11	12	17	283	1
<b>5</b>	97	28	2	9	8	144	1
<b>6</b>	147	15	4	16	2	184	1
<b>7</b>	422	70	12	56	21	581	3
<b>8</b>	759	150	48	82	43	1082	5
<b>9</b>	716	108	32	58	30	944	4
<b>10</b>	580	98	27	44	24	773	4
<b>11</b>	604	100	27	55	18	804	4
<b>12</b>	818	133	29	89	31	1100	5
<b>13</b>	892	174	47	95	31	1239	6
<b>14</b>	808	155	81	91	43	1178	6
<b>15</b>	848	176	73	91	40	1228	6
<b>16</b>	937	182	49	159	36	1363	6
<b>17</b>	1034	238	96	143	52	1563	7
<b>18</b>	947	197	71	89	56	1360	6
<b>19</b>	789	227	62	92	42	1212	6
<b>20</b>	806	197	62	74	31	1170	6
<b>21</b>	635	136	36	85	45	937	4
<b>22</b>	533	89	37	74	27	760	4
<b>23</b>	457	94	12	48	37	648	3
<b>Unknown</b>	119	37	3	24	17	200	1
<b>Total</b>	14662	3007	910	1730	771	21080	100

**Table 13: Injuries by day of the week and city, 1997-2006**

Day of Week	Dublin City	Cork City	Waterford City	Limerick City	Galway City	Total	%
<b>Sunday</b>	1815	425	134	220	100	2694	13
<b>Monday</b>	1954	413	139	241	110	2857	14
<b>Tuesday</b>	2078	406	119	230	98	2931	14
<b>Wednesday</b>	2255	426	116	238	95	3130	15
<b>Thursday</b>	2188	364	120	255	118	3045	14
<b>Friday</b>	2409	505	164	297	144	3519	17
<b>Saturday</b>	1963	468	118	249	106	2904	14
<b>Total</b>	14662	3007	910	1730	771	21080	100

**Table 14: Injuries by month of the year and city, 1997-2006**

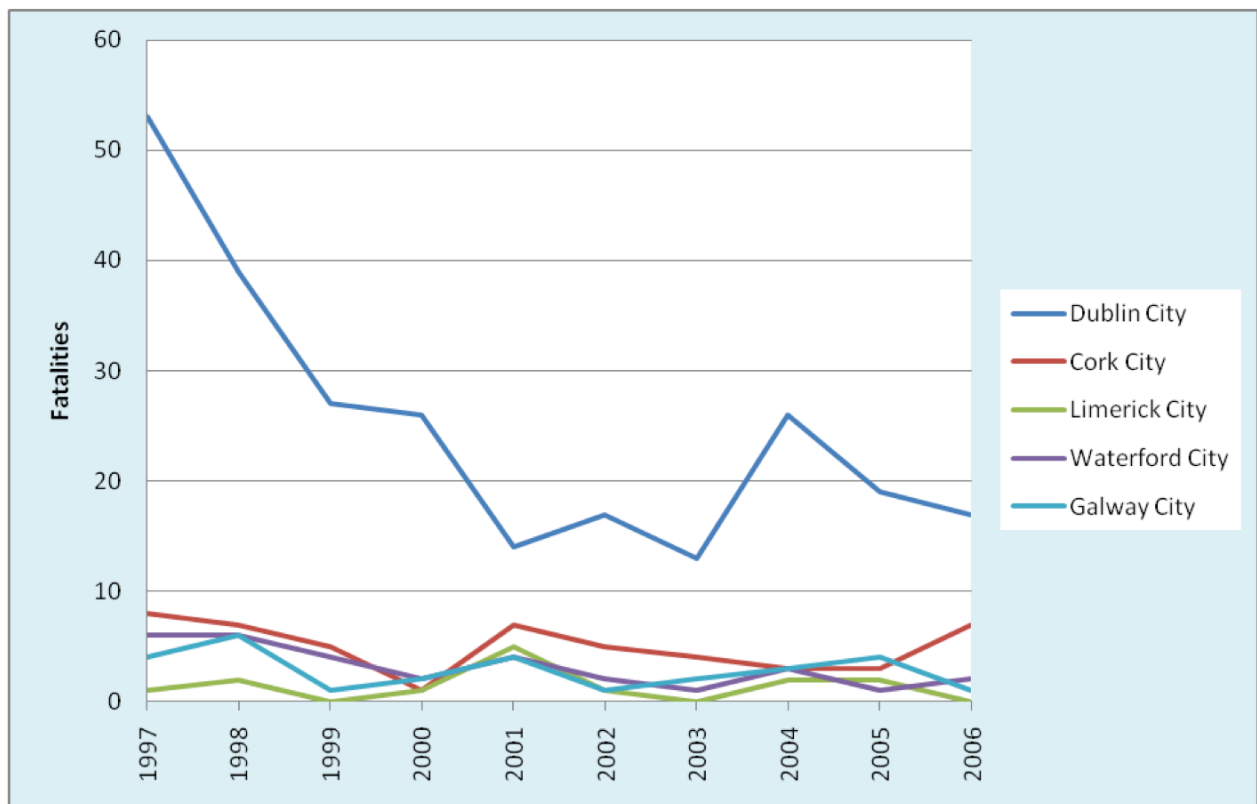
Month	Dublin City	Cork City	Waterford City	Limerick City	Galway City	Total	%
<b>January</b>	1166	280	75	156	53	1730	8
<b>February</b>	1206	244	58	167	58	1733	8
<b>March</b>	1222	269	64	162	77	1794	9
<b>April</b>	1238	249	74	127	59	1747	8
<b>May</b>	1293	247	102	142	68	1852	9
<b>June</b>	1103	222	70	125	57	1577	7
<b>July</b>	1191	230	58	96	62	1637	8
<b>August</b>	1179	196	85	134	70	1664	8
<b>September</b>	1224	219	97	136	51	1727	8
<b>October</b>	1375	328	84	170	77	2034	10
<b>November</b>	1288	293	77	155	76	1889	9
<b>December</b>	1177	230	66	160	63	1696	8
<b>Total</b>	14662	3007	910	1730	771	21080	100

## Trend in collisions and injuries

Over a period of ten years (1997-2006), all the five cities with the exception of Cork have experienced a decline in the road fatalities. Deaths per million population for cities like Galway, Limerick and Dublin have improved. As far as serious and minor collisions are concerned, there is a downward trend for all cities except Galway where there was an increase in the number of minor injury collisions.

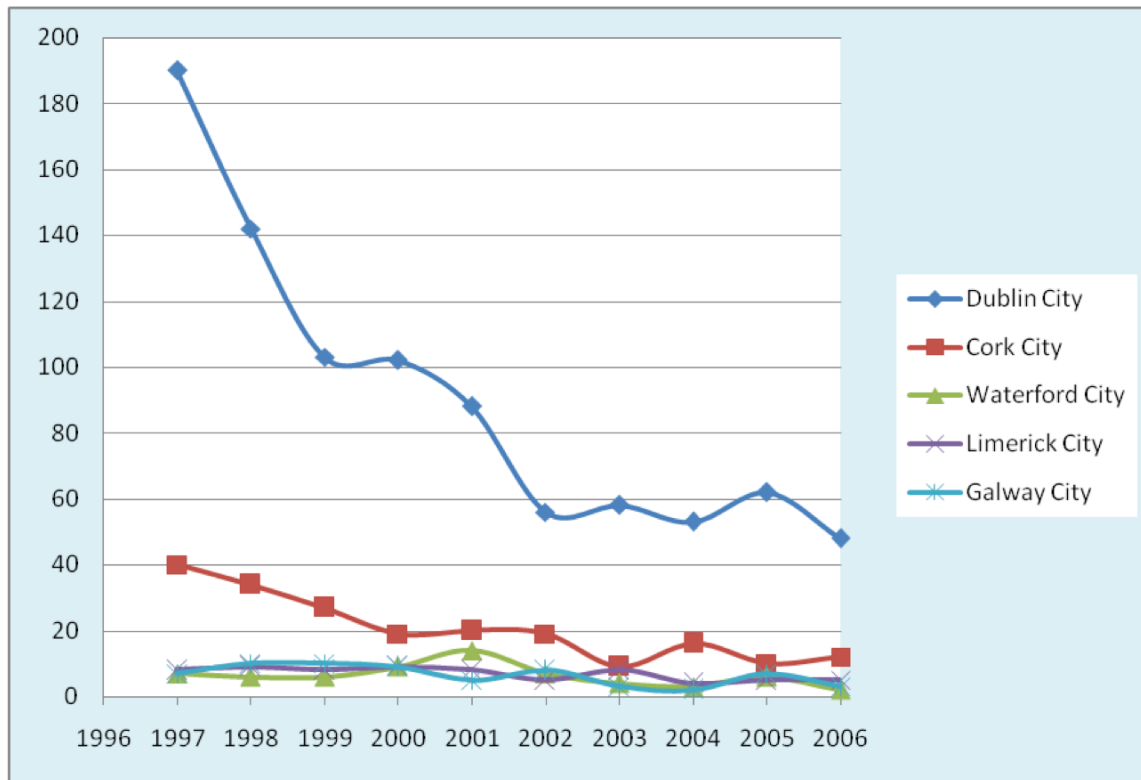
The trends in fatalities, serious and minor collisions for the period 1997-2006 are illustrated in figures 4, 5 and 6 respectively.

**Figure 4: Trend in Road fatalities in the cities, 1997-2006**

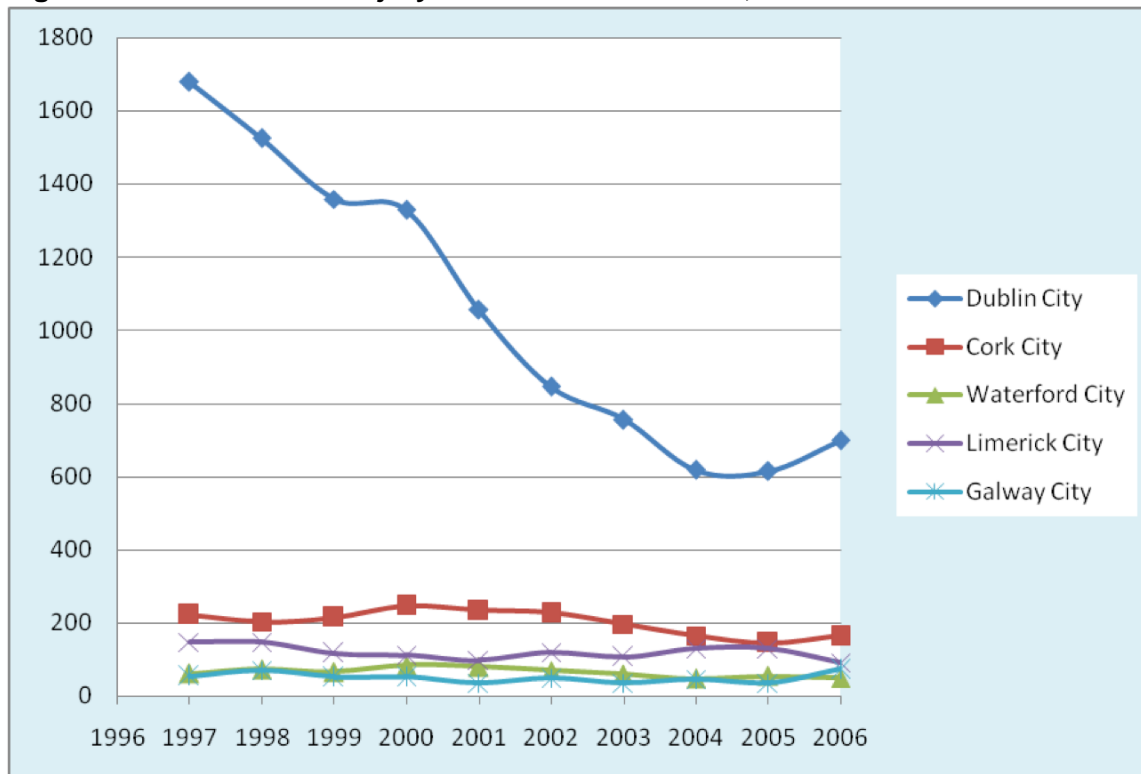




**Figure 5: Trend in serious injury collisions in the cities, 1997-2006**



**Figure 6: Trend in minor injury collisions in the cities, 1997-2006**



**Table 15: Trend in collisions in the five cities, 1997-2006**

Year	Collision type					Total
	Dublin City	Cork City	Waterford City	Limerick City	Galway City	
<b>Fatal</b>						
<b>1997</b>	53	7	1	5	4	70
<b>1998</b>	37	7	2	5	5	56
<b>1999</b>	26	4	0	4	1	35
<b>2000</b>	22	1	1	2	2	28
<b>2001</b>	14	6	4	4	4	32
<b>2002</b>	16	4	1	2	1	24
<b>2003</b>	12	4	0	1	2	19
<b>2004</b>	22	3	2	3	2	32
<b>2005</b>	15	3	2	1	4	25
<b>2006</b>	16	7	0	2	1	26
<b>Total</b>	233	46	13	29	26	347
<b>Serious</b>						
<b>1997</b>	190	40	7	8	7	252
<b>1998</b>	142	34	6	9	10	201
<b>1999</b>	103	27	6	8	10	154
<b>2000</b>	102	19	9	9	9	148
<b>2001</b>	88	20	14	8	5	135
<b>2002</b>	56	19	7	5	8	95
<b>2003</b>	58	9	4	8	3	82
<b>2004</b>	53	16	3	4	2	78
<b>2005</b>	62	10	6	5	7	90
<b>2006</b>	48	12	2	5	3	70
<b>Total</b>	902	206	64	69	64	1305
<b>Minor</b>						
<b>1997</b>	1678	221	60	146	54	2159
<b>1998</b>	1525	202	72	147	70	2016
<b>1999</b>	1358	214	65	116	51	1804
<b>2000</b>	1329	247	84	111	51	1822
<b>2001</b>	1055	233	79	97	35	1499
<b>2002</b>	845	226	69	119	48	1307
<b>2003</b>	755	196	58	106	35	1150
<b>2004</b>	617	164	47	129	45	1002
<b>2005</b>	614	145	54	129	35	977
<b>2006</b>	698	163	48	90	72	1071
<b>Total</b>	10474	2011	636	1190	496	14807

**Table 16: Road fatalities by road user types in Dublin City, 1997-2006**

Road Users	1997	1998	1999	2000	2001	2002	2003	2004	2005	2006	Total	%
<b>Pedestrian</b>	30	18	12	9	6	8	6	19	9	7	124	49
<b>Pedal Cycle Users</b>	6	5	2	2	4	4	0	2	3	3	31	12
<b>Motor Cycle Users</b>	6	6	6	7	2	4	4	4	3	4	46	18
<b>Car Users</b>	9	10	7	7	1	1	2	0	4	3	44	18
<b>PSV Users</b>	1	0	0	0	0	0	0	0	0	0	1	0
<b>Goods Vehicle Users</b>	1	0	0	1	0	0	0	0	0	0	2	1
<b>Other or Unknown</b>	0	0	0	0	1	0	1	1	0	0	3	1
<b>Total</b>	53	39	27	26	14	17	13	26	19	17	251	100

**Table 17: Road fatalities by road user types in Cork City, 1997-2006**

Road Users	1997	1998	1999	2000	2001	2002	2003	2004	2005	2006	Total	%
<b>Pedestrian</b>	6	4	3	1	4	2	1	0	0	5	26	52
<b>Pedal Cycle Users</b>	0	0	0	0	1	0	0	0	1	0	2	4
<b>Motor Cycle Users</b>	1	0	1	0	0	0	2	1	0	0	5	10
<b>Car Users</b>	1	3	0	0	2	1	0	2	2	2	13	26
<b>PSV Users</b>	0	0	0	0	0	0	0	0	0	0	0	0
<b>Goods Vehicle Users</b>	0	0	1	0	0	0	0	0	0	0	1	2
<b>Other or Unknown</b>	0	0	0	0	0	2	1	0	0	0	3	6
<b>Total</b>	8	7	5	1	7	5	4	3	3	7	50	100

**Table 18: Road fatalities by road user types in Waterford City, 1997-2006**

Road Users	1997	1998	1999	2000	2001	2002	2003	2004	2005	2006	Total	%
<b>Pedestrian</b>	1	1	0	0	1	0	0	1	1	0	5	36
<b>Pedal Cycle Users</b>	0	0	0	0	1	0	0	0	0	0	1	7
<b>Motor Cycle Users</b>	0	0	0	0	2	1	0	0	0	0	3	21
<b>Car Users</b>	0	1	0	1	1	0	0	1	1	0	5	36
<b>PSV Users</b>	0	0	0	0	0	0	0	0	0	0	0	0
<b>Goods Vehicle Users</b>	0	0	0	0	0	0	0	0	0	0	0	0
<b>Other or Unknown</b>	0	0	0	0	0	0	0	0	0	0	0	0
<b>Total</b>	1	2	0	1	5	1	0	2	2	0	14	100

**Table 19: Road fatalities by road user types in Limerick City, 1997-2006**

Road Users	1997	1998	1999	2000	2001	2002	2003	2004	2005	2006	Total	%
<b>Pedestrian</b>	4	3	3	1	2	1	0	1	0	1	16	52
<b>Pedal Cycle Users</b>	0	0	0	0	0	0	0	0	0	0	0	0
<b>Motor Cycle Users</b>	0	2	0	0	1	0	0	1	0	0	4	13
<b>Car Users</b>	2	1	1	1	1	1	1	0	1	1	10	32
<b>PSV Users</b>	0	0	0	0	0	0	0	0	0	0	0	0
<b>Goods Vehicle Users</b>	0	0	0	0	0	0	0	0	0	0	0	0
<b>Other or Unknown</b>	0	0	0	0	0	0	0	1	0	0	1	3
<b>Total</b>	6	6	4	2	4	2	1	3	1	2	31	100

**Table 20: Road fatalities by road user types in Galway City, 1997-2006**

Road Users	1997	1998	1999	2000	2001	2002	2003	2004	2005	2006	Total	%
<b>Pedestrian</b>	2	2	1	1	2	1	1	0	1	1	12	43
<b>Pedal Cycle Users</b>	0	0	0	0	0	0	0	0	0	0	0	0
<b>Motor Cycle Users</b>	1	0	0	0	1	0	0	0	1	0	3	11
<b>Car Users</b>	1	3	0	1	1	0	1	3	1	0	11	39
<b>PSV Users</b>	0	0	0	0	0	0	0	0	0	0	0	0
<b>Goods Vehicle Users</b>	0	1	0	0	0	0	0	0	0	0	1	4
<b>Other or Unknown</b>	0	0	0	0	0	0	0	0	1	0	1	4
<b>Total</b>	4	6	1	2	4	1	2	3	4	1	28	100

**Table 21: Killed and seriously injured by road user types in Dublin City, 1997-2006**

Road Users	1997	1998	1999	2000	2001	2002	2003	2004	2005	2006	Total	%
<b>Pedestrian</b>	123	83	66	53	52	41	31	44	36	25	554	44
<b>Pedal Cycle Users</b>	22	18	11	12	10	9	7	6	7	9	111	9
<b>Motor Cycle Users</b>	40	38	26	30	21	17	24	15	16	17	244	19
<b>Car Users</b>	79	54	40	38	24	8	9	13	23	19	307	24
<b>PSV Users</b>	2	1	1	2	0	0	0	1	1	0	8	1
<b>Goods Vehicle Users</b>	7	5	2	4	1	0	0	1	0	1	21	2
<b>Other or Unknown</b>	0	1	0	3	2	1	2	2	3	2	16	1
<b>Total</b>	273	200	146	142	110	76	73	82	86	73	1261	100

**Table 22: Killed and seriously injured by road user types in Cork City, 1997-2006**

Road Users	1997	1998	1999	2000	2001	2002	2003	2004	2005	2006	Total	%
<b>Pedestrian</b>	17	19	15	11	14	8	3	7	3	13	110	36
<b>Pedal Cycle Users</b>	1	0	1	1	1	0	0	1	1	0	6	2
<b>Motor Cycle Users</b>	18	6	3	3	5	6	7	7	4	2	61	20
<b>Car Users</b>	30	24	20	6	12	10	4	4	9	4	123	40
<b>PSV Users</b>	0	0	0	0	0	0	0	0	0	0	0	0
<b>Goods Vehicle Users</b>	0	0	1	1	1	0	0	2	0	1	6	2
<b>Other or Unknown</b>	0	0	0	0	0	2	1	0	0	0	3	1
<b>Total</b>	66	49	40	22	33	26	15	21	17	20	309	100

**Table 23: Killed and seriously injured by road user types in Waterford City, 1997-2006**

Road Users	1997	1998	1999	2000	2001	2002	2003	2004	2005	2006	Total	%
<b>Pedestrian</b>	5	4	2	4	3	4	2	2	3	1	30	36
<b>Pedal Cycle Users</b>	2	2	1	0	2	0	0	0	0	0	7	8
<b>Motor Cycle Users</b>	1	0	2	2	7	3	1	1	1	0	18	21
<b>Car Users</b>	0	2	3	6	7	0	1	1	5	1	26	31
<b>PSV Users</b>	0	0	0	0	0	0	0	0	0	0	0	0
<b>Goods Vehicle Users</b>	1	0	0	0	0	0	0	1	0	0	2	2
<b>Other or Unknown</b>	0	0	0	0	1	0	0	0	0	0	1	1
<b>Total</b>	9	8	8	12	20	7	4	5	9	2	84	100

**Table 24: Killed and seriously injured by road user types in Limerick City, 1997-2006**

Road Users	1997	1998	1999	2000	2001	2002	2003	2004	2005	2006	Total	%
<b>Pedestrian</b>	7	7	7	6	7	4	2	3	1	1	45	38
<b>Pedal Cycle Users</b>	2	2	0	0	1	0	0	0	1	1	7	6
<b>Motor Cycle Users</b>	1	3	3	4	1	1	1	2	0	1	17	15
<b>Car Users</b>	6	6	4	2	4	3	8	1	4	7	45	38
<b>PSV Users</b>	0	0	0	0	0	0	0	0	0	0	0	0
<b>Goods Vehicle Users</b>	1	0	1	0	0	0	0	0	0	0	2	2
<b>Other or Unknown</b>	0	0	0	0	0	0	0	1	0	0	1	1
<b>Total</b>	17	18	15	12	13	8	11	7	6	10	117	100

**Table 25: Killed and seriously injured by road user types in Galway City, 1997-2006**

Road Users	1997	1998	1999	2000	2001	2002	2003	2004	2005	2006	Total	%
<b>Pedestrian</b>	3	4	4	2	3	2	1	0	4	2	25	23
<b>Pedal Cycle Users</b>	1	1	1	2	1	2	1	0	1	0	10	9
<b>Motor Cycle Users</b>	5	7	3	5	5	2	0	2	3	2	34	31
<b>Car Users</b>	6	6	3	5	3	5	5	4	2	1	40	36
<b>PSV Users</b>	0	0	0	0	0	0	0	0	0	0	0	0
<b>Goods Vehicle Users</b>	0	1	0	0	0	0	0	0	0	0	1	1
<b>Other or Unknown</b>	0	0	0	0	0	0	0	0	1	0	1	1
<b>Total</b>	15	19	11	14	12	11	7	6	11	5	111	100

**Table 26: Injured by road user types in Dublin City, 1997-2006**

Road Users	1997	1998	1999	2000	2001	2002	2003	2004	2005	2006	Total	%
<b>Pedestrian</b>	615	505	464	398	367	288	276	225	198	227	3563	24
<b>Pedal Cycle Users</b>	284	250	204	199	142	91	119	96	79	86	1550	11
<b>Motor Cycle Users</b>	422	368	288	366	291	235	165	128	120	133	2516	17
<b>Car Users</b>	1024	965	894	851	613	414	368	347	332	386	6194	42
<b>PSV Users</b>	33	33	25	28	37	11	16	26	7	23	239	2
<b>Goods Vehicle Users</b>	73	65	38	57	19	27	22	14	20	32	367	3
<b>Other or Unknown</b>	18	21	6	10	8	23	9	26	54	58	233	2
<b>Total</b>	2469	2207	1919	1909	1477	1089	975	862	810	945	14662	100

**Table 27: Injured by road user types in Cork City, 1997-2006**

Road Users	1997	1998	1999	2000	2001	2002	2003	2004	2005	2006	Total	%
<b>Pedestrian</b>	69	72	69	77	74	76	62	65	43	64	671	22
<b>Pedal Cycle Users</b>	15	13	15	11	14	10	2	10	4	5	99	3
<b>Motor Cycle Users</b>	74	42	50	78	58	76	60	43	25	19	525	17
<b>Car Users</b>	199	206	183	177	177	168	141	112	107	107	1577	52
<b>PSV Users</b>	0	0	0	2	3	1	3	0	3	5	17	1
<b>Goods Vehicle Users</b>	11	10	6	8	13	6	11	5	7	10	87	3
<b>Other or Unknown</b>	0	2	1	2	0	3	4	2	6	11	31	1
<b>Total</b>	368	345	324	355	339	340	283	237	195	221	3007	100



**Table 28: Injured by road user types in Waterford City, 1997-2006**

Road Users	1997	1998	1999	2000	2001	2002	2003	2004	2005	2006	Total	%
<b>Pedestrian</b>	13	22	26	31	21	21	16	17	16	13	196	22
<b>Pedal Cycle Users</b>	12	12	4	8	2	4	2	2	1	3	50	5
<b>Motor Cycle Users</b>	16	24	16	21	35	23	17	13	13	5	183	20
<b>Car Users</b>	43	55	45	62	59	39	34	29	45	32	443	49
<b>PSV Users</b>	0	0	0	0	0	0	0	0	3	0	3	0
<b>Goods Vehicle Users</b>	1	0	1	7	1	3	3	2	3	2	23	3
<b>Other or Unknown</b>	0	0	1	2	2	0	2	1	1	3	12	1
<b>Total</b>	85	113	93	131	120	90	74	64	82	58	910	100

**Table 29: Injured by road user types in Limerick City, 1997-2006**

Road Users	1997	1998	1999	2000	2001	2002	2003	2004	2005	2006	Total	%
<b>Pedestrian</b>	46	39	37	41	38	27	29	53	37	23	370	21
<b>Pedal Cycle Users</b>	21	18	10	11	5	5	14	6	7	4	101	6
<b>Motor Cycle Users</b>	31	24	26	29	16	35	19	24	11	9	224	13
<b>Car Users</b>	114	125	93	73	88	109	73	75	116	97	963	56
<b>PSV Users</b>	5	0	0	5	0	1	0	1	0	0	12	1
<b>Goods Vehicle Users</b>	6	3	10	2	1	2	3	3	6	8	44	3
<b>Other or Unknown</b>	0	0	1	0	0	1	3	4	5	2	16	1
<b>Total</b>	223	209	177	161	148	180	141	166	182	143	1730	100

**Table 30: Injured by road user types in Galway City, 1997-2006**

Road Users	1997	1998	1999	2000	2001	2002	2003	2004	2005	2006	Total	%
<b>Pedestrian</b>	13	26	22	15	11	13	7	14	13	26	160	21
<b>Pedal Cycle Users</b>	9	11	6	11	7	5	3	7	3	11	73	9
<b>Motor Cycle Users</b>	18	20	6	11	7	11	7	4	5	6	95	12
<b>Car Users</b>	39	40	54	41	29	40	41	36	30	52	402	52
<b>PSV Users</b>	0	0	2	0	0	0	0	0	1	0	3	0
<b>Goods Vehicle Users</b>	7	5	4	7	1	1	1	1	2	1	30	4
<b>Other or Unknown</b>	0	0	0	0	0	0	0	0	3	5	8	1
<b>Total</b>	86	102	94	85	55	70	59	62	57	101	771	100

# Working To Save Lives

## Údarás Um Shábháilteacht Ar Bhóithre Road Safety Authority

Páirc Ghnó Ghleann na Muaidhe, Cnoc an tSabhaircín, Bóthar Bhaile Átha Cliath, Béal an Átha, Co. Mhaigh Eo  
Moy Valley Business Park, Primrose Hill, Dublin Road, Ballina, Co. Mayo  
local: 1890 50 60 80 facs: (096) 25252 email: [info@rsa.ie](mailto:info@rsa.ie) website: [www.rsa.ie](http://www.rsa.ie)